



Centre Hospitalier
de Luxembourg

RECHERCHE ET ENSEIGNEMENT
RESEARCH AND EDUCATION
2014

SOMMAIRE

Préface / Foreword	4
INTRODUCTION	6
Research	7
Education	12
FACE TO FACE	14
Face to face with Mr D, patient at the CHL	15
Face to face with Dr Thérèse Staub	16
Face to face with Dr Jane Thornton	17
DEPARTMENTS	18
› Hemato-Cancerology	19
› Cardiology	22
› Neuroscience	24
› Plastic and maxillo facial surgery - Otorhinolaryngology - Ophtalmology - Dermatology	28
› Pulmonology - Infectious diseases - Immuno-allergology	29
› Musculoskeletal system	32
› Internal medicine, Adult emergency, Palliative and Geriatric care	36
› Anesthesiology - Intensive care	37
› Gynecology - Obstetrics	39
› Pediatrics	40
› Gastroenterology, Hepatology, Nephrology and Endocrinology	42
› Surgery (General, Digestive, Vascular, Thoracic, Endocrine, Hepato-Gastroenterologic) - Urology	44
› Medical Imaging	46
› Healthcare	48
PUBLICATIONS	52
ACADEMIC TITLES	80
CHAPTERS IN BOOKS	88
PRESENTATIONS AT CONGRESSES	90

PRÉFACE

La recherche et l'enseignement dans un hôpital ?

De premier abord, le lien n'est pas évident. L'hôpital est avant tout conçu comme un lieu où l'on soigne, opère, ou conseille en matière de santé. Pourtant, les patients et les visiteurs parcourant les couloirs du Centre Hospitalier de Luxembourg croiseront souvent de jeunes médecins ou étudiants, découvrant ou perfectionnant leur pratique professionnelle. Dans un service, ils entendront parler de l'une ou l'autre étude clinique, testant des traitements ou des techniques de soins. Sur une table de salle d'attente, ils trouveront un dépliant, décrivant les résultats d'un projet de recherche. Au Centre Hospitalier de Luxembourg, recherche et enseignement font partie du quotidien des médecins et des soignants, et le grand nombre d'activités décrites dans ce rapport en est le témoin.

En 2014, nos médecins ont contribué à plus d'une centaine de projets de recherche. Ils ont accueilli une centaine de jeunes médecins, en voie de spécialisation dans l'une ou l'autre discipline, et ont permis l'organisation de plus de 200 stages dans leurs services pour des étudiants en médecine. Leurs noms figurent parmi les auteurs de plus de 250 articles de revues scientifiques internationales ou nationales.

Le Centre Hospitalier de Luxembourg ne peut qu'être fier de ses collaborateurs et de leur dynamisme. Reconnaissant l'importance de leur travail, il s'est doté, en 2014, de moyens spécifiques destinés au soutien de l'enseignement et de la recherche, notamment d'une cellule en charge de leur coordination et de leurs aspects administratifs et techniques. Le CHL est au cœur d'un réseau de fortes collaborations avec les différentes institutions de recherche du Grand-Duché, illustrées notamment en 2014 par son implication dans l'arrivée au Luxembourg du Professeur Rejko Krüger, détenteur de la chaire PEARL 2013 du Fonds National de la Recherche mais également par les liens avec le Luxembourg Institute of Health et ses différents départements et laboratoires, avec l'Integrated Biobank Luxembourg et avec l'Université de Luxembourg. Le CHL cherche aussi à renforcer ses partenariats académiques en développant et maintenant des contacts avec des universités de médecine belges, allemandes et françaises. Partenaire de l'Université du Luxembourg pour l'accueil des jeunes médecins généralistes, il a suivi et continue à suivre avec attention les développements de la Luxembourg Medical School et leurs implications pour le Luxembourg.

Aucune des activités académiques de recherche ou d'enseignement présentées dans ce rapport ne serait possible sans l'implication et l'enthousiasme des médecins et la confiance et le soutien des patients du Centre Hospitalier de Luxembourg.

Merci à tous !

FOREWORD

Research and education in a hospital ?

The connection is not so straightforward at first glance, as hospitals are mostly seen as places where we deliver care, perform operations or give health advice. However, visitors passing through the corridors of the Centre Hospitalier de Luxembourg (CHL) will often meet junior doctors or medical students who are developing or further advancing their medical skills. Entering a department, they will hear about this or that clinical study or tests of treatments or care techniques; on a table in a waiting room, they will find a leaflet highlighting the results of a research project. At the CHL, research and education are part of daily life for doctors and carers, as the (we think) impressive number of activities described in this report bears witness.

In 2014, our physicians contributed to more than a hundred research projects. They welcomed around a hundred junior doctors, specialising in one discipline or the other, and supported the organization of more than 200 internships for medical students in their departments. Their names are listed as authors or co-authors in more than 250 national and international journals.

The CHL can only be proud of their dynamism and achievements. In 2014, acknowledging the importance of this work, the CHL created specific resources to support education and research, notably a cell in charge of the coordination of these resources and their administrative and technical aspects. CHL is at the heart of a strong partnership network with various Luxembourg's research institutions, as demonstrated not only by its involvement in welcoming Prof. Rejko Krüger, 2013 PEARL Chair of the Fonds National de la Recherche but also by the links established with the Luxembourg Institute of Health, its various departments and laboratories, and with the Integrated BioBank Luxembourg and the University of Luxembourg. The Centre Hospitalier is also seeking to strengthen its academic collaboration with Belgian, French and German universities of medicine. As a partner of the University of Luxembourg, welcoming junior doctors from the University for general training, the CHL has been closely following developments at the Luxembourg Medical School and their implications for Luxembourg.

None of the academic activities described in this report could have been possible without the involvement and enthusiasm of CHL's doctors and the trust and support of our patients.

Thank you to everyone !

Virginie GIARMANA
Responsable Cellule Enseignement Médical et Recherche

Dr Marc SCHLESSER
Pneumologue, Directeur Médical Adjoint
en charge de l'Enseignement et de la Recherche

Dr Guy BERCHEM
Oncologue, Resp. du Comité de Coordination de Recherche

Dr Catherine BOISANTE
Anesthésiste, Directeur Médical

> INTRODUCTION

RESEARCH

Research is an integral part of the mission of the Centre Hospitalier de Luxembourg. As stated at the time of its legal foundation in 1975, it is now one of its distinguishing characteristics in the Luxembourg medical landscape. It also represents added value for young doctors and new recruits, who are particularly interested in the possibility of developing the scientific component of their work.

Investing in research in a hospital is a guarantee for all patients that they will be treated with the best of care available and the latest techniques and treatments. While the majority of patients receive standard treatment and care, the fact that their physician is involved in medical research means that they will be aware of the latest developments in their field, and therefore able to deliver a better diagnostic and suggest the best treatment options in cases of rare and complicated disease. At the CHL, patients who agree to take part in a study can contribute to a better understanding of their pathology, for instance by taking part in an observational study, (i.e. without a therapeutic intervention) or support the testing of new drugs and treatment strategies that have not yet been commercialized but are already in the latest stages of testing. Involvement of patients in research programs or studies is voluntary, and only possible when all of the relevant explanations and detailed information have been provided, with the patient understanding all aspects of the project and agreeing in writing to take part. Moreover, physicians at the Centre Hospitalier ensure that all investigations conform to the Helsinki Declaration¹, which states the international principles and framework regarding all medical studies and research.

Physicians at the CHL are involved in both fundamental and clinical research. Fundamental research is often managed in cooperation, either internationally or at the national level, with the Luxembourg Institute of Health (LIH). Several laboratories of the LIH are indeed headed or co-headed by physicians from the CHL, namely the laboratory of cardiovascular research, the laboratory of experimental hemato-oncology, and the laboratory of sports medicine. Researchers from the LIH and physicians from the CHL collaborate on numerous fundamental research projects, in cardiology, oncology and sport medicine most importantly, but also in virology, immunology, allergology and neuroscience. The CHL is also contributing to several collections led by the Integrated Bio Bank Luxembourg, one of the Luxembourg Institute of Health bodies.

RESEARCH

Strong ties have also been formed with the University of Luxembourg, with researchers working on neuroscience, cancer and diabetes. In 2014, the collaboration with the Luxembourg Center for Systems Biomedicine was strengthened, with the CHL hosting and taking part in a very important project led by Prof. Rejko Krüger, FNR (Luxembourg National Research Fund), the PEARL grantee for 2013 for Parkinson's disease.

Almost all medical departments of the CHL are currently involved in clinical studies, as the following pages will demonstrate. Most of these studies are European and multi-centered, with the CHL being the main partner in Luxembourg. For these studies too, a close collaboration exists with the LIH, particularly with its Clinical and Epidemiological Investigation Center (CIEC), which is managing the administrative and technical aspects of several studies, as well as being in contact with the sponsor (pharmaceutical companies or public/private foundations).

The impressive number of publications with CHL specialists as authors or co-authors demonstrates the dynamism and the quality of the medical research led from the Centre Hospitalier de Luxembourg. With more than 250 publications in 2014, most of them in specialized journals with a registered impact factor², CHL's physicians live up to their hospital's mission of research.

¹ <http://www.wma.net/en/30publications/10policies/b3/17c.pdf>
² Average impact factor of 4,78



2014

saw increasing recognition of the research work done at the Centre Hospitalier de Luxembourg. For the first time ever, research prizes were awarded to top researchers/physicians from the CHL, during an award ceremony. Three nominees were selected among the numerous research projects presented :

- › Dr Carine de Beaufort, pediatric endocrinologist at the CHL, received the senior prize for translational research, for her work on microbiome and type 1 diabetes
- › Dr Pascal Stammet, anesthesiologist at the CHL, received the senior clinical prize for his work on the importance of body temperature after cardiac arrest
- › Dr Julien Wen Hsieh, junior doctor in otorhinolaryngology received the junior prize for his work on «Smell & Taste Clinic».

Moreover, financial resources have been allocated at the CHL for the recruitment of a coordinator to take charge of medical education and research with the aim of facilitating the administrative work surrounding research projects, thereby supporting physicians in their willingness to get involved in scientific work.

RESEARCH

FUNDAMENTAL RESEARCH

means experimental or theoretical work undertaken primarily to acquire new knowledge of the underlying foundations of phenomena and observable facts, without any direct commercial application or use in view.

(ref: Communication from the Commission – “Framework for state aid for research and development and innovation”, 21/05/2014)

CLINICAL STUDY

means any investigation in relation to humans intended : (a) to discover or verify the clinical, pharmacological or other pharmacodynamic effects of one or more medicinal products; (b) to identify any adverse reactions to one or more medicinal products; or (c) to study the absorption, distribution, metabolism and excretion of one or more medicinal products; with the objective of ascertaining the safety and/or efficacy of those medicinal products.

(ref: regulation (EU) no 536/2014 of the European Parliament and of the Council of the European Union, 16/04/2014)



108 ongoing studies at the CHL :

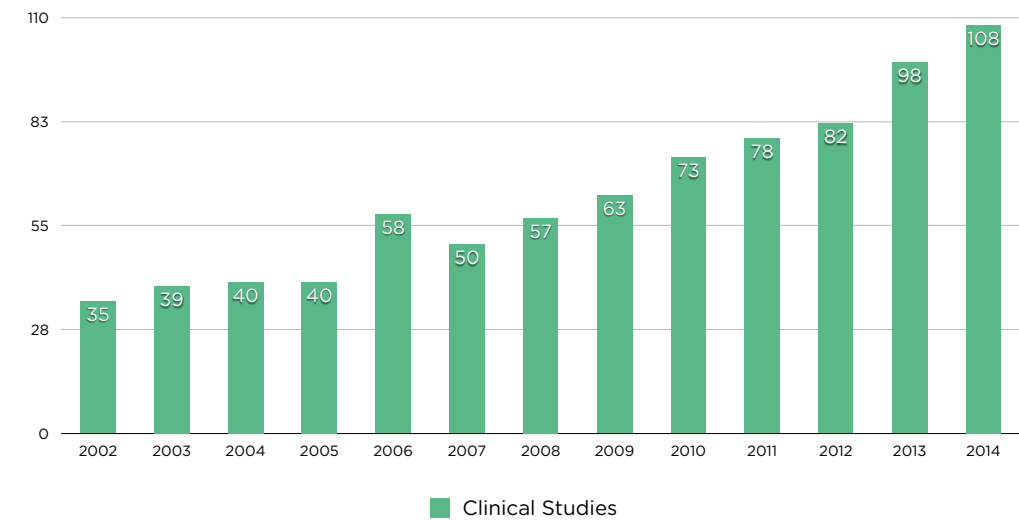
37 in hemato-oncology

14 in infectious diseases

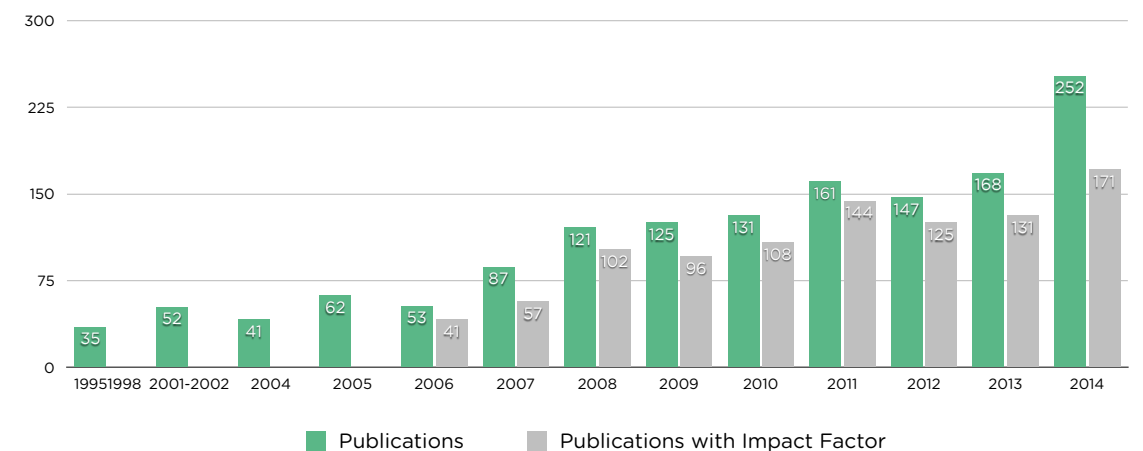
11 in pediatrics

252 Publications (or contribution to publications), including multiple references

Ongoing Clinical Studies per Year



Annual Publications



EDUCATION

Since its establishment in 1975, the Centre Hospitalier de Luxembourg has contributed to the training of more than 1,500 medical doctors, either welcoming them during their student years or their specialization. Although not officially labeled a university hospital as such, its mission encompasses the provision of clinical education and training to future and current physicians, nurses, and other health professionals, in addition to delivering medical care to patients. This mission is of utmost importance for the CHL, as it is the key to training future generations of doctors, who might decide to come and work in the Grand Duchy of Luxembourg.

Building on its multiculturalism and multilingualism, the CHL has developed collaborations with Belgian, German and French universities, welcoming students from these three countries from their first year of medical studies. For example, CHL is a recognized teaching hospital for the University of Saarland (Akademisches Lehrkrankenhaus). This recognition entitles German students in their 6th (and last) year of studies to do their full practical internship year in Luxembourg. A close cooperation also exists with the Belgian Catholic University of Louvain, from which around 50 medical students per year intern at the CHL.

Medical students come for different lengths of time, from two weeks to a year, and are expected to take part in the day-to-day running of all clinical services of the hospital. The fact that medical students often come back after their first period of internship to do several others in different clinical services at the CHL demonstrates the quality of the training provided and of the tutorship.

Junior doctors stay for longer periods, from 6 months to two years, furthering their specialization in one discipline or the other. Well integrated into the clinical teams, they establish their own diagnostic and are expected to provide the right treatment to patients, under the supervision of their tutor. In most of the CHL clinical services, senior physicians have been recognized by the Belgian Ministry of Health or by Federal German Chambers of Doctors as official tutors, and are therefore authorized to assess and validate the practical training of junior doctors in specialty training. In addition, CHL physicians from most of the hospital departments and services are also authorized, by the University of Luxembourg, to welcome and train junior doctors aiming to become general practitioners in Luxembourg.

Last but not least, the CHL welcomes already specialized physicians who want to further improve their knowledge or learn new techniques alongside more senior physicians from the CHL throughout the year.

To complete the practical training provided in the different disciplines, physicians also give theoretical lessons and workshops. These courses encompass all aspects of medical training, from basic workshops on how to deal with emergency situations, to highly technical lessons on specific specialties (cardiology, pediatrics, gynecology, endocrinology, etc.).

	2014
Junior doctors in specialty training	97
Junior doctors in general practice training	29
Internships (medical students, year 1 to 6)	233
› of which second to sixth year medical students	133
› of which medical students from Saarland University in their last year of study	47
› of which first year medical students	53
Recognized trainers for junior doctors	35
› by German authorities	15
› by Belgian authorities	12
› by Luxembourg authorities	19



> FACE TO FACE

FACE TO FACE WITH MR D, PATIENT AT THE CHL

I am a patient from the Centre Hospitalier de Luxembourg. I have a very specific lung cancer, diagnosed three years ago. This type of cancer is supposedly very rare, affecting only 2% of people who have lung cancer. It did take a few months for a cancerologist to find the right diagnosis. I first consulted my pulmonologist, who didn't really know how to deal with me, so, following the recommendation of a friend of mine, I came to the CHL.

We first tried chemotherapy, but the results were not good. My cancerologist then mentioned a clinical study in which a pharmaceutical company wanted to test a new treatment, that had not yet been commercialized. My doctor suggested my inclusion in the protocol, and I accepted. The secondary effects of this treatment were very serious, I had heavy stomachache, I was exhausted, and the clinical results were not convincing. After a year, my cancerologist suggested another treatment, also in the testing phase and not yet commercialized.

This was one and a half years ago. I am still undergoing the same medical treatment. The secondary effects are a lot less severe, even though they are still there of course. I live a «normal» life, I do sports, cycling and running, I am feeling relatively well, and as far as I understand, the cancer is regressing. Of course, it is quite onerous, I have to take 8 pills per day, directly provided by the CHL pharmacy every 4 weeks. Every 6 weeks I do an IRM and a total body scan, both exams requested for the protocol and the pharmaceutical company, and my doctor does check very thoroughly the results and the evolution of the cancer. He told me recently that he would never have thought that I could feel so well, and was not expecting such good results. He added that if he had seen me 6 years ago, he would never have been able to help me. I remember indeed, that he wished me «luck» the first time I met him.

Taking part in a clinical study was a bit like the last straw. When you are facing a situation such as mine, when cancer strikes, it takes time to understand, to accept. And then you are ready to try anything and everything to get better. I even checked the kind of treatments I could apply for in other countries, but for the time being, I do not really see any benefit in trying something else. My current medical treatment is a lifelong one, at least as long as it brings results and the pharmaceutical company is providing it.

I am aware that another patient is undergoing the same medical treatment in Luxembourg, but I do not know this person.

Today I ran 7 kilometers.

FACE TO FACE WITH DR THÉRÈSE STAUB

My name is Thérèse Staub, I am an infectiologist at the Centre Hospitalier de Luxembourg. I have been working here for the last 18 years. In terms of research, we mostly collaborate with the Laboratory of Retrovirology from the LIH (Luxembourg Institute of Health) on two specific issues: HIV (human immunodeficiency virus, i.e. the AIDS virus) and hepatitis C.

When I first arrived at the CHL, it was the start of triple drugs therapy for patients infected with AIDS. We lost patients then that we wouldn't lose today. We went from heavy, complicated treatments which were not working to therapies that allow people to live a normal life. This is what research means to me - be aware of the constant evolutions in my medical specialty, take part in international studies, and find out things that will improve the lives of patients, and even sometimes save their life. Today, despite all the evolutions which have already taken place, there are still many issues to work on regarding HIV. Research is focusing either on the best time to start treatment, or on the possibility of actually stopping the treatments. Mother/child transmission of the infection is also a strong concern.

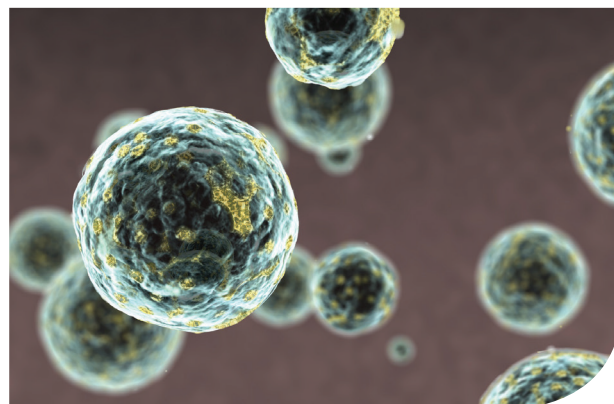
At the CHL, we have 765 HIV-infected patients. I would say that there are around 800 HIV-infected people in Luxembourg in total.

Three times more people are infected with hepatitis C in Luxembourg. Official figures indicate 3,000 people, a lot more than in Germany and slightly more than in Belgium. The virus was identified 25 years ago. At first, drugs were really strong, even toxic, with heavy secondary side effects, and we only managed to cure one patient out of two. Hepatitis C is curable today, but the treatments are very expensive. We mostly do epidemiologic work, trying to identify all people infected in Luxembourg and treating the most seriously affected.

I remember one of my patients, 10 to 12 years ago, who took part in a research protocol on hepatitis C. I contacted him one day, asking him if he was interested in trying the new early access medication which we had received. He was affected by hepatitis C, in a very bad shape, and had been trying different treatments without success. He started the new experimental drugs and 6 months later he was feeling great. Without this new treatment, I am quite sure that he wouldn't have made it.

We sometimes see patients who say, from the very first consultation, that they would be interested in being included in a research project. To help research or because they are personally interested. Some others want to get better and are ready to try anything.

Infectiology is a specialty which has seen unbelievable progress in 25 years. What we thought of as terminal illnesses when I started working are today curable, or at least not deadly anymore. A lot still has to be done on HIV and hepatitis C. One major challenge is research on "tropical diseases", from the southern atmosphere for which it is very difficult to find funding (malaria, Ebola, other unknown infections that we have no idea how to deal with, with very few treatment opportunities). Another quite difficult challenge is discovering new antibiotics. It has been more than 15 years since we last discovered new antibiotics in infectiology. We are, for the time being, not able to deal with resistant bacteria for instance.



FACE TO FACE WITH DR JANE THORNTON

Visiting report of former rowing world champion and Olympian, Dr Jane Thornton from Toronto, Canada at the Luxembourg Olympic Medical Center, November 2013.

Over the span of my decade-long career with the national rowing team, I travelled many times 'across the pond' to race in Europe. It was during this time, in my twenties, when I fell in love with the number of languages and cultures just hours away from each other. After finishing my doctoral studies in sports medicine, I began medical school with the dream of doing 'something international'. My eyes had been opened and I had a dream I kept in the back of my mind to be able to one day practice medicine in Europe, and be a part of an international community in sports medicine in particular.

The opportunity arose in my final year of medicine to do a rotation of my choosing. I knew I wanted to experience more in sports medicine, and I thought an elective in a few different European countries would satisfy my curiosity. My goal was to first do an elective in orthopedic surgery in Europe, and I asked a research colleague, an orthopedic surgeon in Croatia, if there was a place he would recommend. The response was immediate - go to Luxembourg and learn from Prof. Seil and his team. Having never been to Luxembourg, I didn't know what to expect, but set about trying to set up an elective to see what set it apart from the rest.

The answer was obvious right away. I was overwhelmed by the enormous capacity for sports medicine in a relatively small environment.

The CHL Clinique d'Eich includes the head office of ESSKA, the strong research center of CRPSante, as well as various medical specialties including orthopedic surgery, physical medicine and rehabilitation, general practice, and internal medicine. Sports medicine here is truly being approached from every possible angle; and the result is a magnificent multi-disciplinary team that is well-positioned to do great things in the local as well as international community. The opportunities seem limitless.

Even though I ended up as an elite athlete, I came from humble beginnings and have always known that exercise can be beneficial regardless of the level of physical fitness. Therefore, I also appreciated the fact that this center is not only for elite athletes, but also for the recreational athlete, as well as the patient who wants to add physical activity to a currently sedentary lifestyle but might not yet have the tools. It is encouraging to see a center dedicated to holistic care of the active person, from the novice to the Olympian. This dedication goes beyond the walls of the building and out into the community - into the local sports school as well as large-scale sporting events. Sports medicine practitioners here have unique expertise to offer those partaking in physical activity; they can understand barriers to exercise as well as suggest very specific training protocols to make physical activity a sustainable choice in a person's life. It is inspiring to see the investment in preventative healthcare that is being made. This will have a huge payback in the future, as health care costs increase and the burden of chronic preventable disease continues to rise across the globe.

Just as importantly, the welcoming attitude of the team is not something I'll soon forget. I called the orthopedics group I worked with the "Dream Team" and meant it sincerely. The enthusiasm of the group is contagious, and the surgeons and professors are natural teachers. The time was too short, and it was much harder to leave than anticipated. I hope to return again soon, to feel inspired once again!

> DEPARTMENTS

HEMATO-CANCEROLOGY

The department of hemato-cancerology provides diagnosis and treatment of blood diseases and solid tumors. The team consists of 5 senior doctors and 2 junior doctors, led by Dr Caroline Duhem, head of the department. In 2014, 8,911 consultations were made for a total of 4,537 patients, and the department accounted for 12,451 days of hospitalization.

> Education

Physicians from the department are strongly committed to sharing their knowledge and expertise with medical students and junior doctors, who are regularly welcome for a few weeks or months of internships.

> Research

In cancerology, fundamental and clinical research focuses on breast and lung cancers and blood diseases. Clinical research in hematology focuses on myeloma, lymphoma and acute leukemia, with the involvement of willing patients in studies testing new medical treatments and drugs.

The two services of the department are currently taking part in around 40 research projects. Their implementation strongly benefits from the close collaboration established with research institutions in Luxembourg : most notably the Luxembourg Foundation for Research on Cancer and Blood Disorders whose research laboratory is currently headed by Prof Mario Dicato and several bodies from the Luxembourg Institute of Health, namely, the Integrated BioBank Luxembourg and the Laboratory of hemato-oncology , led by Dr Guy Berchem.

Moreover, the logistical support of the LIH Clinical and Epidemiological Investigation Center (CIEC) in managing the administrative aspects of clinical research projects is fundamental for CHL clinicians who can then focus on the science. CHL physicians are regularly involved in international clinical studies (testing of medicines or of medical preparations), sponsored by pharmaceutical companies or academic driven initiatives, alongside other European or international hospitals. The convincing results of some of these tests might mean finding new cures for cancer.

› 2014 | Research projects | Highlights

The AURORA molecular screening program for metastatic breast cancer

The Centre Hospitalier de Luxembourg is currently taking part in AURORA, an academia-driven initiative, aiming to boost genomic and clinical knowledge generated from metastatic breast cancer. Detailed molecular profiling of breast cancer will deepen the current understanding of the molecular biology underpinning this common disease, bringing clinicians several steps closer to the implementation of personalized medicine. To date, most research efforts have focused on the molecular analysis of the primary tumor to dissect the genotypes of the disease. However, accumulating evidence supports a molecular evolution of breast cancer during its life cycle, with metastatic lesions acquiring new molecular aberrations. AURORA aims to interrogate the intratumor heterogeneity of the disease through the coupled genomic analysis of both primary tumor and metastatic lesions. 1,300 patients are expected to take part in the study, and they will be followed for clinical outcomes for 10 years. Depending on the molecular profiles found, patients could be directed to innovative clinical trials assessing molecularly targeted agents. So far, 63 samples have been collected, 8 of which were provided by the CHL, which was one of the first centers included in this multinational study.

Clinical trials in hematology

CHL hematologists are currently involved in several projects financed and led by the Dutch foundation HOVON (Hemato-Oncologie voor Volwassenen Netherlands) on malignant hematological diseases, most notably HOVON 95, which compared different drugs and treatments in patients with newly diagnosed multiple myeloma, and HOVON 132, which is assessing the added value of lenalidomide in combination with standard remission induction chemotherapy in the treatment of young patients. Taking part in these studies is an opportunity for CHL physicians to be involved in a broader scientific network, thereby widening their knowledge of new treatments and techniques for the ultimate benefit of their patients.

› 2014 | Publications | Highlights

First-line crizotinib versus chemotherapy in ALK-positive lung cancer

Berchem G, in Solomon BJ, Mok T, Kim DW, Wu YL, Nakagawa K, Mekhail T, Felip E, Cappuzzo F, Paolini J, Usari T, Iyer S, Reisman A, Wilner KD, Tursi J, Blackhall F and others

N Engl J Med. 2014 Dec 4; 371(23):2167-77.

In December 2014, the New England Journal of Medicine published the results of an international study on lung cancer in which the CHL and the LIH took part. The two-year study, under supervision of the European Medical Association, included 343 participants (male and female adults) from around 170 research centers all over the world, one of them the CHL, in collaboration with the LIH.

The study aimed to evaluate 'crizotinib', a new experimental treatment, and assess whether its utilization could delay the development of a certain type of lung cancer, compared to traditional chemotherapy treatment. Selected patients from the CHL could benefit from this new treatment, with the positive effect of a disappearance of brain metastases and a clear improvement in their quality of life.

Outcome and management of pregnancies in severe chronic neutropenia patients by the European Branch of the Severe Chronic Neutropenia International Registry

Zeidler C, Grote UA, Nickel A, Brand B, Carlsson G, Cortesão E, Dufour C, Duhem C, Notheis G, Papadaki HA, Tamy H, Tjønnfjord GE, Tucci F, Van Droogenbroeck J, Vermeylen C, Voglova J, Xicoy B, Welte K.

Haematologica. 2014 Aug; 99(8):1395-402. Epub 2014 Jul 4

Long-term granulocyte-colony stimulating factor treatment has been shown to be safe and effective in severe chronic neutropenia patients. However, data on its use during pregnancy are limited. To address this issue, we analyzed all pregnancies reported to the European branch of the Severe Chronic Neutropenia International Registry since 1994. A total of 38 pregnancies in 21 women with chronic neutropenia (16 pregnancies in 10 women with congenital, 10 in 6 women with cyclic, 12 in 5 women with idiopathic neutropenia) were reported.

Granulocyte-colony stimulating factor was administered throughout pregnancy in 16 women and for at least one trimester in a further 5 women. No major differences were seen between treated and untreated women with respect to pregnancy outcome, newborn complications and infections. In addition, we evaluated the genetic transmission of known or suspected genetic defects in 16 mothers having 22 newborns as well as in 8 men fathering 15 children. As a proof of inheritance, neutropenia was passed on to the newborn in 58% from female and in 62% from male patients with ELANE mutations, but also to some newborns from parents with unknown gene mutation. Based on our results, granulocyte-colony stimulating factor therapy has been shown to be safe for mothers throughout pregnancies and for newborns without any signs of teratogenicity.

Emerging new anticancer biological therapies in 2013 (hematological malignancies)

Plawny L, Ries F.

Curr Opin Oncol. 2014 May; 26(3):363-70.

Although some hematologic diseases such as Hodgkin's lymphoma and aggressive lymphoma yield high response rates and acceptable overall survival in first-line treatment, relapse is still a challenge, particularly in those patients not eligible for transplant. In acute leukemia, the prognosis remains poor in general with standard chemotherapy, thus emphasizing the need for efficient alternate therapies. In recent years, biological anticancer agents comprising mAbs, small targeted molecules or more recently bispecific T-cell engaging molecules or chimeric antigen receptors have been developed in hematologic diseases. This review examines the recent advances in biotherapies in the fields of acute leukemia, aggressive lymphoma, Hodgkin's lymphoma and chronic lymphatic leukemia.

› 2014 | Events and News

Dr Guy Berchem defended his PhD thesis "role of hypoxic stress in the regulation of the anti-tumor immune response mediated by Natural killer lymphocytes" in December 2014 at Paris Sud University (Orsay). Dr Berchem was awarded his PhD with the highest possible marks. He demonstrated that hypoxic tumor cells, by secreting MVs, can educate NK cells and decrease their antitumor immune response. This thesis highlights the existence of a novel mechanism of immune suppression mediated by hypoxic TD-MVs and further improves our understanding of the immunosuppressive mechanisms prevailing in the hypoxic tumor microenvironment.



Number of students/
interns and junior
doctors in 2014 :

14 Medical
students

4 Junior
doctors

Number of publications :

28 Articles or
contributions to
articles in national
and international
journals

CARDIOLOGY

The department of cardiology deals with the diagnosis and treatment of heart and vascular diseases. The multidisciplinary team provides medical care to patients and devotes part of its time to support education, prevention and rehabilitation, an essential part of a preventive treatment for further cardiac incidents. In 2014, 14,950 patients consulted the team of 10 cardiologists and 5 junior doctors led by Dr Daniel Wagner, head of the department. The department accounted for 9,546 days of hospitalization.

› Education

Physicians from the department are committed to welcoming medical students and junior doctors pursuing their specialization. The department also regularly receives high school students potentially interested in medical studies who are doing short observational internships to have a first exposure to the day to day life of specialized doctors in a hospital.

› Research

Realizing the importance of research to prevent cardiac diseases and support a quicker and better rehabilitation of affected patients, the clinicians of the department consider research on cardiovascular diseases part of their medical mission. They are currently implementing several research projects, both in clinical and fundamental research. Fundamental research is strongly supported by the involvement of Dr Daniel Wagner as head of the laboratory of cardiovascular research of the Luxembourg Institute of Health (LIH) and by the close relation existing with the National Institute of Cardiac Surgery and Interventional Cardiology (INCC). Two of the priority areas of fundamental research are the understanding of the mechanisms responsible for the development of heart failure following myocardial infarction and the importance of physical exercise in patients with heart failure. As for the clinical trials, a few of them are assessing the pros and cons of technical devices, either aiming at supporting patients with heart diseases, or at establishing a more precise diagnosis.

› 2014 | Research projects | Highlights

Role of non-coding RNAs in acute myocardial infarction

In a collaborative research project with the Laboratory of Cardiovascular Research from the Luxembourg Institute of Health, physicians from the CHL have measured plasma levels of non-coding RNAs (microRNAs and long non-coding RNAs) in patients with acute myocardial infarction. Based on the data gathered via the enrolment of 414 patients with acute myocardial infarction treated by primary percutaneous coronary intervention, the team of researchers proved that certain microRNAs correlate with outcome and may help to select patients at high risk of complication after myocardial infarction. These promising results motivate further investigation on the role of long noncoding RNAs after myocardial infarction.

› 2014 | Publications | Highlights

Unity is strength - a panel of 4 microRNAs decreases cardiomyocyte hypertrophy

Goretti E, Zangrando J, Wagner DR, Devaux Y.
Int J Cardiol 2014;24:62-64

Discovered in 1993, microRNAs (miRNAs) are small (20–23 nucleotides) single stranded non-coding RNAs that modulate gene expression through target messenger RNA degradation or translational inhibition. MicroRNAs are participating in multiple biological pathways in the heart. Circulating miRNAs are stable and have been proposed as novel biomarkers for personalized health care of patients with cardiovascular disease. Using a system-based approach, the authors recently identified several miRNAs with prognostic capacity after myocardial infarction (MI).



Number of students/
interns and junior
doctors in 2014 :

14 Medical students
and 4 high school
students

8 Junior
doctors

Number of publications :

14 Articles or
contributions to
articles in national
and international
journals

The Department of Neuroscience at the Centre Hospitalier de Luxembourg (CHL) encompasses different services, all related to disorders of the central and peripheral nervous system and disorders of mental health, i.e. neurology, neurosurgery and psychiatry. Besides daily clinical work, each service has developed several areas of expertise: stroke, multiple sclerosis, epilepsy, Parkinson's disease and other movement disorders for neurology, sexology, addiction and eating disorders for psychiatry, and cranial, vascular and spine surgery as well as neuromodulation for neurosurgery. Neurologists and neurosurgeons also have a strong technical expertise in different stimulation techniques of the human brain (e.g. deep brain stimulation, vagal nerve stimulation). In 2014, 16,641 consultations were done with 10,826 patients, by the team of 16 specialized doctors and 5 junior doctors, led by Dr Stefan Beyenburg, head of the department. The department accounted for 30,347 days of hospitalization.

› Education

The department is committed to education and training, and already has a long tradition of collaboration with different universities, abroad as well as in Luxembourg. More than 30 medical students, from their first to their last year of medical studies, are welcomed per year for an internship in the three different services. The service of neurology for instance, welcomes 4 to 6 students from the Medical University of Cologne twice a year for a week of intense training. Moreover, several doctors are regularly involved in academic teaching courses at Universities in Germany (at Bonn, Cologne, Münster, and Homburg).

› Research

Several research projects are currently underway, mostly in fundamental research and mainly on Parkinson's disease, stroke, epilepsy, and neurosurgery for brain tumors. The close collaboration already existing with the Luxembourg Centre for Systems Biomedicine (LCSB) of the University of Luxembourg was reinforced in 2014 by the appointment of Prof. Rejko Krüger, a neurologist specializing in Parkinson's disease. Prof. Krüger combines the position of Professor of Neuroscience at the University of Luxembourg with that of a physician at the service of neurology at the CHL, meeting and treating patients, and leading a very important research project on Parkinson's disease. Another privileged partner is the Laboratory of Neuro-oncology (NORLUX) from the Luxembourg Institute of Health, with whom Dr Frank Hertel, neurosurgeon at the CHL, regularly collaborates. The department also developed several research collaborations with German Universities, notably with the University of Applied Sciences in Trier.

› 2014 | Research projects | Highlights

REM sleep density in Parkinson's disease

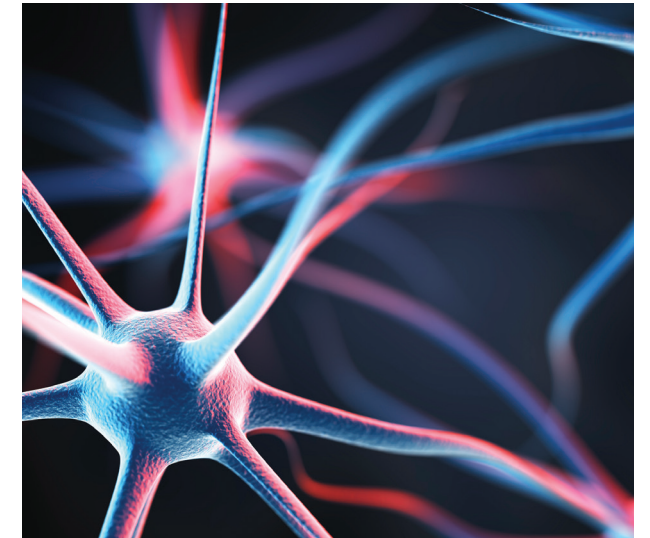
Diederich NJ, Rufra O, Pieri V, Hipp G, Vaillant M. (2013), *Lack of polysomnographic Non-REM sleep changes in early Parkinson's disease. Mov. Disord., 28: 1443-1446.*

In idiopathic Parkinson's disease (IPD), disease-inherent degeneration of sleep regulation centers has been postulated, and rapid eye movement (REM) sleep behavior disorder has been identified as a forerunner syndrome. With longer disease duration, polysomnography (PSG) evidenced progressive sleep "destructuring." At an advanced stage of the disease, patients with IPD also have lower sleep efficiency and shorter REM stage than age-matched controls. However, some of these findings have been collected in cohorts with variable disease duration and with preferential recruitment of the most disabled patients. To gather PSG data on sleep quality and quantity in early motor stages of IPD, neurologists and researchers decided to use PSG to search for REM sleep atonia in patients with early IPD, defined as a disease duration ≤ 3 years. They also search for other objective sleep changes, to explore the impact of dopaminergic treatment on sleep quality and quantity, and finally, to compare subjective sleep complaints with the PSG data.

Development of automatic planning and evaluation algorithms and analysis of feedback mechanisms for stereotactic Deep Brain Stimulation procedures and Neuro-navigation

In this translational research project, implemented in cooperation with the Luxembourg Center for Systems Biomedicine (LCSB) and the University of Applied Sciences in Trier, engineers, computer scientists, mathematicians and neurosurgeons work closely together to develop algorithms for planning of stereotactic and navigated neurosurgical algorithms, as well as to develop mathematical models for intelligent stimulators for the future.

The cooperation with the University in Trier has already existed for 11 years and was enlarged by the LCSB in 2014. Patents were already developed, and a number of scientific publications and presentations were written and presented by members of the group.



Analysis of tumors and tumor environment interactions in Gliomas

The goal of this cooperative project, implemented with the Luxembourg Institute of Health (Laboratory of Neuro-Oncology and Clinical and Epidemiological Investigation Center) is to combine basic with clinical research and develop new innovative strategies for brain tumor treatments. A number of experimental models have been established (e.g. animal models, tumor spheroid models) and a prospective collection of human brain tumor material has been established since 2008. With this "tumor bank", experimental prospective, as well as retrospective trials could be performed in working towards personalized brain tumor therapies.



➤ 2014 | Publications | Highlights

Are patients with Parkinson's disease blind to blindsight ?

Diederich NJ, Stebbins G, Schiltz C, Goetz CG.
Brain 2014; 137:1838-1849.

In Parkinson's disease, visual dysfunction is prominent. Visual hallucinations can be a major hallmark of late stage disease, but numerous visual deficits also occur in early stage Parkinson's disease. Specific retinopathy, deficits in the primary visual pathway and the secondary ventral and dorsal pathways, as well as dysfunction of the attention pathways have all been posited as causes of hallucinations in Parkinson's disease. We present data from patients with Parkinson's disease that contrast with a known neuro-ophthalmological syndrome, termed 'blindsight'. Although a large data set on these deficits in Parkinson's disease has been accumulated, consolidation into one specific syndrome has not been proposed. We propose this synthesis to prompt refined neuropathological and neuroimaging studies on the pivotal nuclei in these pathways in order to better understand the networks underpinning this newly conceptualized syndrome in Parkinson's disease.

DTI of the visual pathway - white matter tracts and cerebral lesions

Hana A, Husch A, Gunness VR, Berthold C, Doms G, Boecher Schwarz H, Hertel F.
J Vis Exp. 2014; 26;(90). doi: 10.3791/51946.

DTI is a technique that identifies white matter tracts (WMT) non-invasively in healthy and non-healthy patients using diffusion measurements. Similar to visual pathways (VP), WMT are not visible with classical MRI or intra-operatively with microscope. DTI will help neurosurgeons to prevent destruction of the VP while removing lesions adjacent to this WMT. We have performed DTI on fifty patients before and after surgery between March 2012 and January 2014.



➤ 2014 | Events and News

In June 2014, the internationally renowned expert on Parkinson's disease Prof. Rejko Krüger started his research in Luxembourg. Backed by a prestigious grant from the Fonds National de la Recherche Luxembourg, Prof. Krüger started his work at both the Centre Hospitalier de Luxembourg (CHL) and at the Luxembourg Centre for Systems Biomedicine (LCSB) of the University of Luxembourg.

Prof. Krüger has set up a comprehensive clinical and basic scientific program in which he aims to involve patients from the CHL. Combining his medical practice with his research objectives, he is offering consultations at the CHL for Parkinson's patients, providing individual advice on options for treatment and, if these patients are interested and willing to actively contribute to the research of their disease, the possibility to take part in the research project.

Number of students/
interns and MEVS in 2014 :

33 Students

6 Junior
doctors

Number of publications :

48 Articles or
contributions to
articles in national
and international
journals

PLASTIC AND MAXILLO FACIAL SURGERY – OTORHINOLARYNGOLOGY – OPHTHALMOLOGY – DERMATOLOGY

The department of plastic and maxillo facial surgery, otorhinolaryngology, ophthalmology and dermatology specializes in the evaluation, diagnosis and treatment of a full spectrum of ear, nose and throat disorders, as well as areas within the head and neck. With a commitment to providing the highest quality care and the most advanced treatments, the department has strongly developed its medico-technical infrastructures to treat pathologies related to the loss of senses and communication: hearing, taste, smell, voice and balance (equilibrium). More than 20,000 patients per year consult the team of 6 medical doctors and 5 junior doctors led by Dr Jérôme Keghian, head of the department. In 2014, the department accounted for 5,440 days of hospitalization.

› Education

The department is committed to welcoming and training junior doctors and medical students who can benefit from the extensive expertise of senior specialists in otolaryngology.

› Research

Research in the department focuses on the olfactory function with preliminary works on the development of a “smell and taste clinic” in Luxembourg. This work is led in collaboration with Geneva University Hospital, and particularly its rhinology and olfactory department.

› 2014 | Events and News

Dr Julien Hsieh from the otorhinolaryngology department was awarded the 2014 CHL junior prize for his research on smell and taste. Dr Hsieh, who spent a year at the CHL to complete his training as an ORL specialist, focused his research on the olfactory function and most particularly on smell disorders, seeking ways to identify these disorders and treat them. His research gave rise to a manuscript which could be used as a guideline book for junior and specialized doctors. He also contributed to the development of a new olfactory test which would allow an olfactory assessment for patients.



Number of students/
interns and junior
doctors in 2014 :

4 students, from which 2 high school students who spent a week at the CHL to discover the work of a medical doctor

9 Junior doctors

PULMONOLOGY – INFECTIOUS DISEASES – IMMUNO-ALLERGOLOGY

The department combines three complementary services, two of which, “infectious diseases” and “immuno-allergology”, are recognized as national services¹. In pulmonology, the team provides comprehensive care for the full range of respiratory conditions and diseases, from asthma to COPD (chronic obstructive pulmonary disease), lung cancer, cystic fibrosis and HTAP (hypertension pulmonary artery). In infectiology, the team is specialized in the prevention, diagnosis and therapy of all infectious diseases, from pneumonia to HIV. The immuno-allergology service deals with common and rare allergies (to pneumallergen, trophallergen and drugs), as well as more complex and rare immuno-deficiencies in adults and children. In 2014, the specialized team of 11 senior doctors and 3 junior doctors, led by Dr Catherine Charpentier, head of the department, performed 24,794 consultations for 16,391 patients. The department accounted for 10,879 days of hospitalization.

› Education

Physicians from the department welcome and train medical students and junior doctors pursuing their specialization every year. Future family doctors completing their training at the University of Luxembourg regularly gain practical experience in the different services of the department.

› Research

The department has strong ties to the Luxembourg Institute of Health, with several fruitful collaborations in fundamental research, mostly on immunology and infectiology, as well as clinical research, with an ongoing involvement of the Clinical and Epidemiological Investigation Center (CIEC) in several studies currently implemented at the CHL. The current director of the Luxembourg Institute of Health, Dr Jean-Claude Schmit, is also an infectiologist at the CHL.

Due to its strong involvement in prevention by avoiding tobacco and the consequences of smoking, research in pulmonology mostly focus on chronic obstructive pulmonary disease and lung cancer and its treatment. Pulmonologists also work on cystic fibrosis and contribute to several European wide studies and registers. Fundamental research in allergology focuses on food anaphylaxis, with several studies dealing with diagnostic and potential therapies for food allergies. Research on respiratory allergies is a second axis of work for CHL allergologists, with a strong focus on allergies to rodents. As for infectiology, the strong collaboration with the LIH Laboratory of Retrovirology is leading several projects on HIV and Hepatitis C.

¹ National services in Luxembourg are responsible, by acknowledgment of the Luxembourg Ministry of Health, for providing care to all patients living in the country and affected by a disease related to the expertise and skills of the specialized physicians of its service.

➤ 2014 | Research projects | Highlights

Bronchial airway gene expression in smokers with lung or head and neck cancer

Van Dyck E, Nazarov PV, Muller A, Nicot N, Bosse-ler M, Pierson S, Van Moer K, Palissot V, Mascaux C, Knolle U, Ninane V, Nati R, Bremnes RM, Vallar L, Ber-chem G, Schlessner M.

Référence: Cancer Med, 2014 Apr;3(2):322-36. Epub 2014 Feb 4.

Cigarette smoking is the major cause of cancers of the respiratory tract, including non-small cell lung cancer and head and neck cancer. In order to better understand carcinogenesis of the lung and upper airways, researchers compared the gene expression profiles of tumor-distant, his-tologically normal bronchial biopsy specimens obtained from current smokers with non-small cell lung cancer or head and neck cancer, as well as nonsmokers and smokers without cancer. A total of 97 biopsies were used for gene expression profiling. Smoking-related cancer of the respiratory tract was found to affect the expression of genes encoding xenobiotic biotransformation proteins, as well as proteins associated with crucial inflammation/immunity pathways and other processes that protect the airways from the chemicals in cigarette smoke or contribute to carcinogenesis.

Strategic timing of antiretroviral treatment (START)

Primarily financed by the National Institute of Allergy and Infectious Diseases, one of the American National Institutes of Health, this mul-ticenter study led by the University of Minneso-ta aims to find out the best time to start taking HIV medicines for people infected with HIV. Re-searchers are trying to find out if the chances of getting one serious illnesses (heart attacks, liver disease, or kidney failure) or of getting AIDS are less if patients start taking HIV medicines at a time when the CD4 count is still high instead of at a later stage. The CHL is one of the several centers taking part in the study, and has been enrolling patients since 2011.

Results of the study should be published in 2015, answering for the first time the most important question “when is it better to start treatment?”.



Allergies to rodents

Identification and isolation of a FEL d 1-like mole-cule as a major rabbit allergen

Hilger C, Kler S, Arumugam K, Revets D, Muller CP, Charpentier C, Lehnert C, Morisset M, Hentges F.

Reference: Journal of Allergy and Clinical Immunolo-gy, vol 133, number 3, 753-766, march 2014

After working for several years on rodent aller-gies, the service of immune allergology reached a milestone in this project in 2014, by identifying and isolating a FEL d 1-like molecule as a major rabbit allergen. Rabbits are increasingly kept as domestic pets. Several rabbit allergens have been characterized. However, their sequences are still elusive and none of these molecules are available for diagnosis. Researchers sought to isolate major allergens from the rabbit orycto-lagus cuniculus and to investigate their impor-tance in sensitized patients.

➤ 2014 | Publications | Highlights

Asthma and smoking : a dangerous mix

Charpentier-Chaix C, Abou Hamdan K, Wirtz G, Mo-risset M, Schlessner M.

Reference: Le courrier des addictions, vol.16 : n1 (2014/01/02/03) - p 16-19

Smoking is as common in those suffering from asthma as it is in the general population. Active and passive smoking increase the risks of asth-ma and severe asthma, of the persistence of asthma in children, of resistance in inhaled cor-ticosteroid treatment and of a greater decline of the respiratory function. Prevention of smoking in asthmatic adolescents as well as smoking cessation for adults affected with asthma are a strong necessity.

Virological and immunological outcomes of elvitegravir-based regimen in a treatment-naïve HIV-2-infected patient

Zheng Y, Lambert C, Arendt V, Seguin-Devaux C.

Reference: AIDS, 2014 Sep24; 28(15):2329-31

Treatment options are limited in HIV2 patients. This article describes the first case of elvitegravir use in a treatment-naïve HIV-2 patient. This treat-ment was successful, showing that FTC/TDF/EVG could be a drug of choice for HIV-2 patients.

Chapter “food anaphylaxis prevention” in “Ad-vances in anaphylaxis management”

Future Medicine Ltd, April 2014, 143 pages, pages 108-123

In this chapter, Dr Morisset acknowledges that under pressure from patient groups and profes-sional networks, significant progress has been-made by health authorities over the last 20 years in North America, Australia and Europe to im-prove the prevention of life-threatening ana-phyllaxis. She adds that prevention also requires a clear identification of factors that contribute to the aggravation of the clinical expression of allergy. The rise of biotechnology may lead to a better detection of high-risk allergens. Sec-ondary prevention is also based on a training of patients and their entourage to avoid risk foods and to recognize the symptoms of anaphylaxis and how to use of the emergency kit.

The therapeutic controls of the underlying chro-nic allergic disease, and especially the devel-opment of specific immunotherapy in recent years, have become essential items of theman-agement of food anaphylaxis.

Number of students/ interns and junior doctors in 2014 :

25 students, from which 2 high school students who spent a week at the CHL to discover the work of a medical doctor

6 Junior doctors

Number of publications :

60 Articles or contributions to articles in national and international journals



MUSCULOSKELETAL SYSTEM

The department of the musculoskeletal system deals with both pathologies like congenital, degenerative, traumatic and inflammatory bone and joint diseases, physical handicap and the benefits and downsides of physical exercise. It hosts the services of orthopedic surgery, trauma surgery, sports medicine, rehabilitation medicine and rheumatology. The medical team consists of 20 senior specialized physicians and 8 junior doctors. In 2014, the surgeons of the department performed around 2,700 surgical procedures. 43,714 consultations were done with 16,953 patients. The department accounted for 15,551 days of hospitalization.

Besides this clinical expertise, many members of the department have a strong academic orientation. Four of its physicians have an appointment as extraordinary professors in German universities with whom they collaborate through either education or research activities. Other doctors are involved in the teaching programs of national or foreign schools of higher education. Through these teaching and scientific activities, the members of the Department are credited with a high international recognition and credibility among their peers in their respective fields of medical specialization. Their scientific work contributes to the development of medicine for the benefit of all patients.

› Education

From an educational perspective, physicians are active at various levels. They welcome doctors and medical students at different time points of their educational curriculum: from pre-clinical internships to postgraduate subspecialty medical education. In 2014, seven young MDs performed their specialized medical education in orthopedics and traumatology in the department. The sports medicine service welcomed its first resident educated according to a unique training curriculum, specifically adapted to the needs of the Luxembourg sports medicine environment. Furthermore, future family doctors from the University of Luxembourg are regularly hosted in the department. Physicians are supervising candidates for masters and PhD theses for students in medicine, engineering, physiotherapy etc. in collaboration with Universities and Schools of Higher Education in Luxembourg, the Greater Region Saarlorlux and beyond.

› Research

Research in the Department focuses around the development of new surgical techniques in orthopedic and trauma surgery, the improvement of diagnostic procedures of pathologies of the musculoskeletal system following an injury or surgery, the optimization of the rehabilitation process, as well as the maximization of the clinical outcome of patients. The Department has two privileged research partners: the Sports Medicine Research Laboratory of the Luxembourg Institute of Health, directed by Prof. Daniel Theisen, PT-PhD and co-directed by Profs. Romain Seil, Axel Urhausen and Dietrich Pape, and the Department of Experimental Orthopedics of the University of Saarland, Homburg-Saar, Germany, directed by Prof. Henning Madry. The clinician-researchers of the Department are organized in the Cartilage Net of the Greater Region Saarlorlux.

The department is currently implementing the following five research programs, both in clinical and fundamental research (principal investigators in brackets) :

- Geriatric fracture (Prof. Torsten Gerich)
- Knee osteotomy (Prof. Dietrich Pape)
- Knee soft tissue (Prof. Romain Seil)
- Knee replacement (Prof. Romain Seil)
- Physical exercise (Prof. Axel Urhausen)

› 2014 | Research projects | Highlights

Research project on ruptures of the anterior cruciate ligament (ACL)

Combined anterior and rotational laxity measurements allow characterizing personal knee laxity profiles in healthy individuals

Mouton C, Seil R, Meyer T, Agostinis H, Theisen D.
Knee Surg Sports Traumatol Arthrosc. 2014, Aug 26

The project is part of the CHL knee soft tissue research program and more specifically of the ACL clinical pathway. This is an interdisciplinary initiative by the CHL and the sports medicine research laboratory of the Luxembourg Institute of Health. It is co-funded by public bodies like the Fonds National de la Recherche (FNR) as well as the "Oeuvre Grande Duchesse Charlotte". Its goal is to gain knowledge in the treatment of ACL injured patients. In the framework of this project, our researchers managed to quantify physiological knee laxity, i.e. the natural knee laxity of non-symptomatic and non-traumatic individuals. Based on physical and technical tests made on 104 healthy participants, the investigators confirmed the diversity of laxity profiles and highlighted the complexity of the interpretation of multidirectional knee laxity, suggesting the necessity for individualized care of knee diseases and injuries. Their conclusions contributed to the understanding of knee laxity and drew the basis for prevention strategies and improvement of treatment outcomes in injuries and diseases.



➤ 2014 | Publications | Highlights

Hidden Lesions of the Posterior Horn of the Medial Meniscus - a Systematic Arthroscopic Exploration of the Concealed Portion of the Knee

Sonnery-Cottet B, Conteduca J, Thauinat M, Gunepin FX, Seil R.

American Journal of Sports Med., 2014 Apr;42(4):921-6

Anterior cruciate ligament (ACL) tears are frequently associated with meniscal lesions. Despite improvements in meniscal repair techniques, failure rates remain significant, especially for the posterior horn of the medial meniscus. A collaborative work between researchers from the Centre Hospitalier de Luxembourg and the Clinique Santy from Lyon aimed at determining whether a systematic arthroscopic exploration of the posterior horn of the medial meniscus with an additional posteromedial portal is useful to identify otherwise unrecognized lesions. The article describes the methods used and the analysis of the results and concludes that posterior visualization and posteromedial probing of the posterior horn of the medial meniscus can help in discovering a higher rate of lesions that could be easily missed through a standard anterior exploration.

Osteotomy techniques close to the knee. Effect on wedge volume and bony contact surface

Pape D, van Heerwaarden R, Haag M, Seil R, Madry H.

Der Orthopade 2014 Nov;43 (11): 966-75

Bone geometry following osteotomy around the knee suggests that biplanar rather than uniplanar open wedge techniques simultaneously create smaller wedge volumes and larger bone surface areas. However, precise data on the bone surface area and wedge volume resulting from both open and closed wedge high tibial osteotomy (HTO) and distal femoral osteotomy (DFO) techniques remain unknown. Collaboration between physicians from the CHL and from the MaartenskliniekWoerden, as well as researchers from the University of Luxembourg, hypothesized that biplanar rather than uniplanar osteotomy techniques better reflect the ideal geometrical requirements for bone healing, representing a large cancellous bone surface combined with a small wedge volume.

Iliopubisubcutaneous plate osteosynthesis for osteoporotic fractures of the anteriorpelvic ring. An alternative to the supra-acetabularexternalfixator.

Gerich T, Bogdan A, Backes F, Gillman T, Seil R, Pape D.

*Bull Soc Sci Med Grand DuchéLuxemb.*2014 ;(1):7-14.

The majority of fractures of the anteriorpelvic ring are treated non-operatively. However, a number of patients do not become pain free and can not be mobilized. So far, the first choice of treatment has been a fracture immobilization with a supra-acetabularexternalfixator. However, this procedure is associated with significant complications. Therefore, an alternative technique based on recent anatomical studies was developed by the trauma team of the Department. The article reflects a clinical feasibility study to evaluate a novel stabilization technique for fractures of the anteriorpelvic ring in the elderly patient. This technique obtains rapid pain reduction, early ambulation and functional recovery in this group of patients which are at high risk for comorbidities.

Promotion of physical activity for secondary prevention in patients with chronic diseases: the situation in the Grand-Duchy of Luxembourg

Lion A, Urhausen A, Delagardelle C, Seil R, Theisen D.

Bull Soc Sci Med Grand Duché Luxemb. 2014 ;(3):57-72.

The regular practice of physical activity has health benefits in healthy subjects (primary prevention) and in patients with non-communicable diseases (secondary prevention). This study aimed to perform a stocktaking of the physical activities programs for patients or individuals at risk in the Grand-Duchy of Luxembourg. Eleven organizations offering therapeutic physical activities (TPA) have been identified. The national coverage is quite low, especially for obesity, neurology and orthopedics. This low rate is related to a lack of information and to organizational constraints. These private initiatives compensate for the current lack of concrete action of the public and private authorities. The public health action initiated by these groups should be perpetuated and strengthened with a better structuration and professionalization. The study is part of a program funded by the «Euvre Grande-Duchesse Charlotte» to develop physical activity as a tool for secondary prevention in various diseases in Luxembourg.

➤ 2014 | Events and News

Congress of the French Arthroscopic society in Luxembourg

For the first time ever, Luxembourg hosted the annual congress of the French Arthroscopic society from the 4th to the 6th of December. Presided by Prof. Romain Seil, head of the department, the congress welcomed more than 1600 participants from all over Europe who gathered in Luxembourg, to discuss recent developments in arthroscopy and exchange views and expertise. Two symposia, 3 guest lectures, several instructional course lectures, debates and discussion took place over the course of these three eventful days. A specific research day was organized by the department in collaboration with Prof. Madry's team from the University of Saarland. The congress benefited from the financial support of several sponsors, among them the National Research Fund Luxembourg

(see: <http://www.fnr.lu/fnr-publications/annual-reports-annual-report-2014>, pp 20-21)



Number of students/
interns and junior
doctors in 2014 :

11 Students

4 Junior
doctors

Number of publications :

53 Articles or
contributions to
articles in national
and international
journals

INTERNAL MEDICINE, ADULT EMERGENCY, PALLIATIVE AND GERIATRIC CARE

The department was recently reorganized and now encompasses several different services. Emergency care is the first point of contact for adult with acute health issues. It provides diagnosis and treatment, while dispatching patients to the more specialized departments and services. Geriatric care works closely with the emergency unit by taking care of aging patients in need of hospitalization and special treatments. Medical doctors and nurses from the team also intervene in all departments and services of the CHL when needed. This is also the case for the professionals from the palliative care service, which is also managing a 10-bed unit.

In 2014, 36,251 patients consulted the team of 16 medical doctors led by Dr Michel Petit, head of the department. The department accounted for 19,687 days of hospitalization.

➤ Education and research

Physicians from the department are seldom involved in medical research. Moreover, the complex and emotional nature of the work in these specific services has an impact on the number and level of competences of medical students accepted in the department. Only the most advanced students from their 3rd to their last year of medical studies can do an internship in the different services of the department.

➤ 2014 I Events and News

Physicians from the palliative care service took part in a study led by the multidisciplinary European Association of Palliative Care which aim was to learn what facilitates and hinders the development of palliative care in the community across Europe. Acknowledging that most people who are dying, unless they have cancer, still fail to access generalist or specific palliative care, researchers sought to identify barriers and opportunities for palliative care in the community. A toolkit was then constructed, suggesting various innovations and approaches and highlighting examples of innovations and best practice in various European countries.

Promoting palliative care in the community: production of the primary palliative care toolkit by the European Association of Palliative Care Taskforce in primary palliative care

Murray SA, Firth A, Schneider N, Van den Eynden B, Gomez-Batiste X, Brogaard T, Villanueva T, Abela J, Eychmuller S, Mitchell G, Downing J, Sallnow L, van Rijswijk E, Barnard A, Lynch M, Fogen F, Moine S.

Palliat Med. Epub 2014 Nov 13. [http://www.eapcnet.eu/Portals/0/Clinical/Publications/PM201529\(2\)Murray.pdf](http://www.eapcnet.eu/Portals/0/Clinical/Publications/PM201529(2)Murray.pdf)

Number of students/
interns and junior
doctors in 2014 :

11 medical
students

ANESTHESIOLOGY - INTENSIVE CARE

The department combines two complementary medical services. In anesthesiology, the team has a strong expertise in anesthesia and post-operative supervision of patients dealing with complex pathologies such as morbid obesity, neurosurgery, pediatric and neonatology. Intensive care medicine takes care of patients whose vital functions are failing and ensures post-operative follow-up of heavy surgery. In 2014, 16,518 patients consulted the team of 22 specialized doctors and 3 junior doctors, led by Dr Philippe Robert. The department accounted for 7,045 days of hospitalization.

➤ Education

Physicians from the department welcome and train medical students and junior doctors pursuing their specialization each year.

➤ Research

Physicians from the intensive care unit work in close collaboration with CHL cardiologists, with a strong focus on cardiac arrest. Current research focuses on the outcome after resuscitation from cardiac arrest, and particularly on the exploration of new and known biomarkers. This research aims at contributing to a better evaluation of the neurological impact after a cardiac arrest and better care for those patients.

Although the team's involvement in research is fairly recent, it has already contributed to several international research projects, one of which achieved great recognition in 2013 with a publication in the New England Journal of Medicine, one of the most prestigious medical journals in the world.



› 2014 | Research projects | Highlights

NorthPole study (Biosignature to Predict Outcome after Hypothermia for Patients Surviving Cardiac Arrest)

As the first researchers to describe micro-RNAs as biosignatures after cardiac arrest in 2012, CHL physicians are currently involved in a follow up project, aiming to discover new and not yet described biomarkers and biosignatures (expression and levels of different markers in the blood) in patients initially successfully resuscitated from cardiac arrest. Patient data are collected, as well as blood samples drawn 48 hours after cardiac arrest for analysis, with the goal of identifying markers for outcome prediction after cardiac arrest. This project developed thanks to collaboration between the departments of anesthesiology and cardiology at the CHL, with the national institute for cardiac surgery and interventional surgery (INCCI) and with the laboratory of cardiovascular research of the Luxembourg Institute of Health. Bringing together all the relevant partners in cardiac and intensive care research from Luxembourg, this project is an illustration of the importance of the CHL as a clinical partner within the research landscape of the country.

› 2014 | Publications | Highlights

Bispectral index to predict neurological outcome early after cardiac arrest

Stammet P, Collignon O, Werer C, Sertznig C, Devaux Y. *Resuscitation*. 2014 Dec;85(12):1674-80. Epub 2014 Sep 23.

In this prospective observational study in adult comatose patients treated by therapeutic hypothermia after cardiac arrest we measured bispectral index (BIS) during the first 24 hours of intensive care unit stay. A blinded neurological outcome assessment by cerebral performance category (CPC) was done 6 months after cardiac arrest. Forty-six patients (48%) had a good neurological outcome at 6 months, as defined by a cerebral performance category (CPC) 1-2, and 50 patients (52%) had a poor neurological outcome (CPC 3-5). Over the 24 hours of monitoring, mean BIS values over time were higher in the good outcome group (38 ± 9) compared to the poor outcome group (17 ± 12) ($p < 0.001$). Analysis of BIS recorded every 30 minutes provided an optimal prediction after 12.5 hours, with an area under the receiver operating characteristic curve (AUC) of

0.89, a specificity of 89% and a sensitivity of 86% using a cut-off value of 23. With specificity fixed at 100% (sensitivity 26%) the cut-off BIS value was 2.4 over the first 271 minutes. In multivariable analyses including clinical characteristics, mean BIS value over the first 12.5 hours was a predictor of neurological outcome ($p = 6E-6$) and provided a continuous net reclassification index of 1.28% ($p = 4E-10$) and an integrated discrimination improvement of 0.31 ($p = 1E-10$).

Mean BIS value calculated over the first 12.5 hours after ICU admission potentially predicts 6-month neurological outcome after cardiac arrest.

› 2014 | Events and News

Dr Pascal Stammet, anesthesiologist, was awarded the CHL Senior Science Award for Clinical Research in May 2014 for his work on the Targeted Temperature Management (TTM) trial, an international, multi-center, randomized clinical trial. The first results from the study, published in the prestigious *New England Journal of Medicine* (2013), suggested that therapeutic hypothermia, as recommended by international guidelines for the treatment of cardiac arrests, may not actually be beneficial for survival. The investigators found that hypothermia at a targeted temperature of 33°C did not confer a benefit as compared with a targeted temperature of 36°C.

Number of students/
interns and junior
doctors in 2014 :

7 Junior
doctors

Number of publications :

4 Articles or
contributions to
articles in national and
international journals

GYNECOLOGY - OBSTETRICS

› 2014 | Events and News

Gynecologists from the CHL took part in an exceptional surgery performed on a young woman in her 19th week of pregnancy, for a unilateral gigantomastia, secondary to a rapid-growth giant hamartoma during her second pregnancy. Breast hamartoma is a benign tumor consisting of fat, fibrous and glandular tissue. Rigorous clinical and ultrasonographic examinations were performed followed by multiple biopsies. The decision to perform surgery was guided by the risk to skin integrity and of tumor infarct. Our report provides detailed information on gestational benign breast tumors, on the specificities of medical imaging and breast surgery in pregnant patients.

Gigantomastie unilatérale gravidique : à propos d'un cas d'hamartome géant

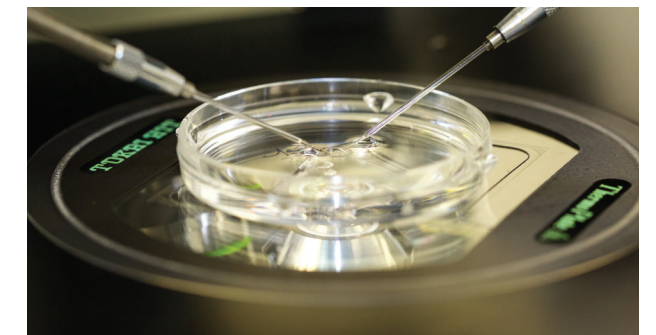
Kuhn-Beck F, Foessel L, Bretz-Grenier M.-F, Youssef Akladios C, Mathelin C

Gynécologie Obstétrique & Fertilité, Volume 42, Issue 6, Pages 444-447

The department of gynecology offers a full spectrum of care regarding women's health, from gynecological and surgical consultations, to pregnancies and emergency obstetrical and gynecological care. The department also encompasses a fertility service, dealing with in-vitro fecundation and all questions related to sterility. The team of highly skilled physicians has also built up expertise in gynecological surgery. More than 17,000 patients per year consult the team of 9 senior gynecologists (8 gynecologists and 1 physician specializing in assisted reproduction) and 5 junior doctors and the department welcomes around 2,200 newborns per year. In 2014, it accounted for 16,399 days of hospitalization.

› Education and research

Due to time constraints, gynecologists and obstetricians are seldom involved in research projects. The department is, however, a well-recognized training center for junior doctors and medical students. Five junior doctors, completing their specialization in gynecology-obstetrics are part of the team at all times and contribute to all aspects of the medical care offered. Moreover, thanks to the strong ties built up over the years with several Belgian faculties of medicine, as well as with the German university of Saarland, 3 to 4 medical students are present all year round, spending 8 to 16 weeks interning in the different services of the department in rotation.



Number of students/
interns and MEVS in 2014 :

14 Students

9 Junior doctors

The department of pediatrics provides care for children and their families from birth until adolescence. The department encompasses the complete range of pediatric specialties (from neonatology to pedopsychiatry) and therefore plays the role at the national level of a center of reference for pediatrics diseases and disorders. In 2012, the service of pediatric endocrinology was recognized as European center of reference for pediatric diabetes by the international society for pediatric and adolescent diabetes, based on their evaluation of the quality of care provided at the Centre Hospitalier de Luxembourg. In 2014, the specialized team of 33 doctors including 8 neonatologists and pediatric intensive care specialists, 1 neuropediatrician, 3 pediatric surgeons, 4 child psychiatrists and 17 pediatricians and emergency care physicians and 9 junior doctors, led by Isabelle Kieffer, head of the department, performed 30,100 consultations for 12,389 patients. First point of reference for pediatric emergency in Luxembourg, the department also dealt with 32,037 emergency visits, an average of 87 visits per day.

› Education

With a very experienced team of specialized doctors, the department attracts numerous medical students each year from neighboring countries (Belgium and France) as well as junior doctors. For these students the diversity of daily patient consulting at the pediatric clinic means encountering a variety of cases and diseases, which broadens their experience and expertise. They also appreciate the dedication and time of the more experienced doctors, supporting them throughout their internships.

› Research

Fundamental research focuses on pediatric endocrinology, with the strong collaboration of Dr Carine de Beaufort, internationally recognized as the leading expert in the field, with the Luxembourg Centre for Systems Biomedicine of the University of Luxembourg. The team mainly works on diabetes, seeking to improve the short and long term outcomes of children suffering from this severe chronic disease, with a focus on their quality of life.

Several clinical projects are also managed thanks to the collaboration with the LIH Clinical and Epidemiological Investigation Center (CIEC) and the Integrated Bio Bank Luxembourg (IBBL).

› 2014 | Research projects | Highlights

Coordinated by the University of Helsinki and mainly financed by the National Institutes of Health (part of the US department of Health and Human Services) the

Trial to Reduce Insulin Dependent Diabetes Mellitus in the Genetically at Risk (TRIGR)

was the first multicenter international type 1 diabetes prevention trial to be undertaken. The Centre Hospitalier de Luxembourg was one of the 77 centers which took part in the study, aiming to recruit pregnant women matching the

research criteria and their newborns for long term follow up assessment. All over the world, 5,000 mothers and their infants were enrolled with the aim of testing whether weaning to formula containing hydrolyzed vs. intact cow's milk protein would be efficacious in decreasing risk for development of type 1 diabetes-associated auto antibodies and type 1 diabetes among infants identified to be at increased risk for diabetes, based on their human leukocyte antigen profile and family history. Results of the research have been presented in several articles.

› 2014 | Publications | Highlights

Familial very long chain acyl-CoA dehydrogenase deficiency as a cause of neonatal sudden infant death: Improved survival by prompt diagnosis

Scalais E, Bottu J, Wanders RJA, Ferdinandusse S, Waterham HR, De Meirleir L.

2015. *Am J Med Genet Part A* 167A:211-214.

Inherited metabolic disorders are the underlying causes of a small but significant number of neonatal sudden infant deaths. Very Long chain Acyl-CoA Dehydrogenase (VLCAD) deficiency is the most common long-chain fatty acid oxidation defect, with a disease prevalence of up to 1:31,500. Neonatal presentation is often characterized either by hypertrophic or dilated cardiomyopathy, hepatic encephalopathy, or severe hypoketotic hypoglycemia, or by all three together. We describe a family with repeated neonatal deaths due to VLCAD deficiency, and the clinical evolution of the latest affected sibling.

Joining forces: a call for greater collaboration to study new medicines in children and adolescents with Type 2 diabetes

Karres J, Pratt V, Guettier JM, Temeck J, Tamborlane WV, Dunger D, Bejnariu C, De Beaufort C, Tomasi P

2014, *Diabetes Care* 2014; 37:2665-2667

A collaborative effort will facilitate the collection of adequate and well-controlled pediatric efficacy and safety clinical trial data to inform pediatric use of new drugs to treat type 2 diabetes. An approach relying on a multi-arm trial is a particularly attractive one, which leverages efficiencies gained from use of a shared control group with efficiencies gained from a shared research infrastructure. Success in pediatric drug development has often involved collaboration. Indeed, reliance on consortia-based approaches to evaluate no-

vel therapies was successful for other relatively uncommon pediatric diseases and should meet with similar success in type 2 diabetes.

› 2014 | Events and News

Dr Carine de Beaufort, physician at the CHL is also the Secretary General of the International Society for Pediatric and Adolescent Diabetes. In this capacity, she was invited by Indonesian health care professionals to give lectures in Jakarta on the most important topics for the care of children with diabetes. The course, limited to 40 participants, combined plenary sessions, fruitful exchanges among teams around theoretical and real case histories, and practical skills training. A registry was started as a follow-up of this course to identify children with diabetes. The creation of this registry led to a more than tenfold increase in the number of children identified with this disease (now > 1,000), which suggest that the incidence of the course may be far higher than expected.

Number of students/
interns and junior
doctors in 2014 :

24

Students, of which 4 high school students who spent a week at the hospital to learn about the work of a specialized doctor

18

Junior doctors

Number of publications :

13

Articles or contributions to articles in national and international journals

GASTROENTEROLOGY, HEPATOLOGY, NEPHROLOGY AND ENDOCRINOLOGY

The department of gastroenterology, hepatology, nephrology and endocrinology brings together medical specialties all dealing with chronic diseases with heavy impact on public health. The four services mainly perform ambulatory acts, with a strong focus on therapeutic training for patients. In 2014, approximately 11,500 consultations were done with 9,600 patients by the medical team of 9 specialists and 3 junior doctors led by Dr Frédéric Dadoun, head of the department. The department accounted for 5,141 days of hospitalization.

› Education

Physicians from the department are committed to welcoming students in their 4th to 6th year of medical studies to provide them with a practical training in several weeks in 3 sub-specialties of internal medicine. Such trainings are mandatory in the Belgium and German systems, and medical students often choose to train at the department of gastroenterology, hepatology, nephrology and endocrinology at the CHL. They benefit from the strong medical expertise of senior physicians and have the opportunity to be involved in the day-to-day running of their service, thereby encountering different pathologies and treatments.

› Research

Research on endocrinology focuses on body composition in relation to metabolic diseases of children and adults and on type 1 diabetes. In this context, projects have been led on auto-immunity as well as new treatment technologies in type 1 diabetes. Sharing the same research interest, endocrinologists have built a strong relation with pediatrics endocrinologists and have already collaborated on several research projects.

› 2014 | Research projects | Highlights

Obesity and overweight children in Luxembourg

With a total of 250 million children overweight or obese in the world, childhood obesity is a major public health concern, as it is associated with early cardiometabolic risks, increased risk of adulthood obesity and worse health outcomes. Endocrinologists took part in a study led by pediatric endocrinologists from the CHL and researchers from the Luxembourg's Institute of Health to investigate the relationship between leg fat mass and cardiometabolic risk factors in youth. The study led to the conclusion that, after taking total body fat mass into account,

leg fat mass may protect against cardiometabolic risks factors in children and adolescents, especially against insulin resistance and adverse blood lipid profiles.

Cardiometabolic risk: leg fat is protective during childhood

Samouda H, De Beaufort C, Stranges S, Hirsch M, Van Nieuwenhuysse J-P, Dooms G, Gilson G, Keunen O, Leite S, Vaillant M, Lair M-L, Dadoun F

Pediatric Diabetes 2015

› 2014 | Publications | Highlights

Autoimmune disorders and quadrivalent human papillomavirus vaccination of young female subjects

Atlan C, collaborator in Grimaldi-Bensouda L, Guillemot D, Godeau B, Bénichou J, Lebrun-Frenay C, Papeix C, Labauge P, Berquin P, Penforis A, Benhamou PY, Nicolino M, Simon A, Viallard JF, Costedoat-Chalumeau N, Courcoux MF, Pondarré C, Hilliquin P, Chatelus E, Foltz V, Guillaume S, Rossignol M, Abenhaim L.

PGRx-AID Study Group.

One of the endocrinologists of the Centre Hospitalier de Luxembourg took part in a multicentric study which investigated whether the quadrivalent human papillomavirus vaccine is associated with a change in the risk of autoimmune disorders in young female subjects. No evidence of an increased risk of the most frequent autoimmune diseases was found following vaccination within the time period studied.

› 2014 | Events and News

Physical activity and sport practice has proven beneficial for the global health and wellbeing of type 1 diabetes patients, but the fear of hypoglycemia and of glycemic disturbances is an obstacle to regular practice. Together with other diabetology teams from France, a multicentric study (DIABRASPORT II) is being set up at the CHL in order to provide a more accurate guidance to patients, for both insulin dosing and dietary advices during and after physical activities. It will involve endocrinologists and physiotherapists and should start in 2015. The aim is to better prevent hypoglycemia and glycemic disturbances during and after exercise to promote regular physical activity in patients with type 1 diabetes.



Number of students/
interns and junior
doctors in 2014 :

12 Students

3 Junior doctors (2 of them
as part of their rotation
in "internal medicine"
departments)

Number of publications :

3 Articles or contributions
to articles in national and
international journals

SURGERY (GENERAL, DIGESTIVE, VASCULAR, THORACIC, ENDOCRINE, HEPATO-GASTROENTEROLOGIC) – UROLOGY

The department regroups two services. The first one deals with general surgery, as well as specialized surgery for digestive and endocrine diseases. Surgeons have developed a strong expertise in minimally invasive surgery, such as laparoscopic surgery, one of the most efficient ways to deal with cancer surgery. The second service is specialized in urology. More than 9,600 patients annually consult the team of 7 medical doctors (5 in surgery, 2 in urology) and 5 junior doctors, led by Dr Martine Goergen, head of the department. In 2014, the department accounted for 10,889 days of hospitalization.

› Education

Thanks to the links built with several Spanish universities, one to two Spanish junior doctors have the opportunity every year to spend a few months in Luxembourg to complete their training and learn from highly experienced surgeons. Junior doctors coming to Luxembourg are particularly interested in techniques related to laparoscopic surgery, in which CHL physicians have extensive expertise.

› Research

Fundamental and clinical research in the department focuses on obesity and metabolic surgery, and on laparoscopy (or minimally invasive surgery) as a major technique in gastric and metabolic surgery. Moreover, surgeons strongly collaborate with cardiologists and oncologists on research on cancer and cardiovascular diseases.

› 2014 | Research projects | Highlights

Fast and best tracks in obesity and metabolic surgery

The team is currently working on a project on fast and best tracks in obesity and metabolic surgery, aiming at standardizing and establishing a new pathway in obesity and metabolic surgery, with the ultimate goal of improving outcomes and diminishing costs. More than 100 patients were included last year. Preliminary analysis indicates that fast-track in bariatric surgery can indeed reduce hospital costs, in terms of infrastructure investment, but also regarding the length of patient's stay in the hospital. Physicians also realized how essential the information given to patients is. As a consequence they support a multidisciplinary consultation with all members of the medical and health care team, to improve coordination and communication among colleagues, and ultimately the care of the patient.

Imigastric - establishing a Multi-Institutional registry to compare the outcomes of robotic, laparoscopic and open surgery for Gastric Cancer

Physicians from the CHL are taking part in a multicenter study led by the University of Perugia, to compare the outcomes of robotic, laparoscopic and open surgery for gastric cancer. Gastric cancer represents a great challenge for health care providers and requires a multidisciplinary management in which surgery plays a main role. Minimally invasive surgery has been progressively developed, first with the advent of laparoscopy and more recently with the use of the robotic system. A number of issues are currently being debated, including the limitations in performing effective extended lymph node dissections and, in this context, the real advantages of using robotic systems, the possible role for advanced gastric cancer, the reproducibility of total intracorporeal techniques and the oncological results achievable during longterm followup. IMIGASTRIC, a multiinstitutional project, aims at creating the most extensive international database in existence of patients receiving distal, subtotal or total gastrectomy using the robotic, laparoscopic or open approach performed at institutions with experience in gastric and minimally invasive surgery. Analysis of the data collected will allow researchers to determine the long and short term surgical and clinical outcomes and to compare the results according to the type of intervention and surgical approaches.

› 2014 | Publications | Highlights

Minimally invasive management of postoperative esophagojejunal anastomotic leak

Facy O, Goergen M, Poulain V, Heieck F, Lens V, Azagra JS.

Surg Laparosc Endosc Percutan Tech. 2014 Apr.

Between 2003 and 2011, 38 patients underwent laparoscopic total gastrectomy and 2 developed an esophagojejunal fistula. The diagnosis was established by a computed tomography scan with contrast ingestion. The absence of complete dehiscence and the vitality of the alimentary loop were checked during laparoscopic exploration, associated with effective drainage. During the endoscopy, dehiscence was assessed and a covered stent and nasojejunal tube were inserted for enteral feeding. The leaks healed progressively, oral feeding was resumed

and the drains removed within 3 weeks. The stent was removed after 6 weeks. Three months later, the patients were able to eat without dysphagia. Early diagnosis allows for successful conservative management. The objectives are effective drainage, covering by an endoscopic stent and renutrition. Management by a multidisciplinary team is essential.

› 2014 | Events and News

Two of the highly experienced surgeons of the department, Dr Martine Goergen and Dr Juan Santiago Azagra lately received high distinctions; Dr Goergen has been appointed European professional mediator as well as member of the administration council of the Foundation Kribskrank Kanner and Dr Azagra was recognized as an honored member of the French Surgery Academy.

Number of students/
interns and junior
doctors in 2014 :

10 Junior doctors

5 Visiting doctors

25 Students

Number of publications :

5 Articles or
contributions to
articles in national and
international journals

MEDICAL IMAGING

The department of medical imaging provides a full range of imaging and therapeutic services, with specific expertise in pediatric radiology, neuroradiology, mammography, nuclear medicine and interventional radiology (utilization of minimally invasive image-guided procedures to diagnose and treat diseases in nearly every organ system). In 2014, the department performed 178,248 images, and 68,468 patients consulted the team of 14 radiologists and neuroradiologists and 4 junior doctors, led by Dr Vincent Lens, head of the department.

› Education

Physicians from the department welcome and train medical students and junior doctors pursuing their specialization each year.

› Research

Research in the department mostly focuses on technical aspects of radiology and on the different techniques and devices used. Radiologists are also often co-investigators of studies or researches done by other specialists and services (neurology, oncology, cardiology, and orthopedics to mention a few). The images they realize are a strong support to the assessment and analysis done in clinical as well as fundamental research projects.

› 2014 | Research projects | Highlights

Neuroradiologists from the CHL are taking part in a new research project led by the Centre François Baclesse, Luxembourg's national center of radiotherapy. This new observational study aims at assessing the possibility of cerebral necrosis after stereotaxic radiotherapy of metastasis. It also intends to assess the clinical, radiological and dosimetric incidences. The project started in 2014, with results expected in 2016 and a publication to follow. It will help demonstrate the importance of focused treatments of cerebral metastasis, as well as assessing the efficiency of operations via cyber knife.

Observational and prospective study of cerebral necrosis after stereotaxic radiotherapy of metastasis

Antoni D, Dooms G, Van Haver T, Paulus P, Untereiner M, Nickers P.

› 2014 | Publications | Highlights

Primary aortic thrombosis: role of enhanced multislice CT demonstrated in three exceptional cases

Verbeeck N, Cavez N, Plawny L, Weber J, Lens V.
JBR-BTR. 2014 Mar-Apr; 97(2):76-80.

Primary aortic thrombosis remains a rare entity that can be defined as clotting of the vessel without any obvious atheromatous lesion. Cancer chemotherapy, cocaine intake, essential thrombocythemia, some hypercoagulable states, heparin-induced thrombocytopenia, inflammatory disease of the digestive tract and acute pancreatitis are, beside some cases of rather unknown etiology, the causes of primary aortic thrombosis. Intravenous contrast-enhanced multislice CT, which is widely available, noninvasive and affordable in terms of cost, is the imaging modality of choice for the investigation of primary aortic thrombosis and the assessment of potential complications. Three cases due to chemotherapy, antiphospholipid syndrome and acute pancreatitis are reported.

Radioinduced brain cyst: case report

Dooms G, Molitor P, Boulanger T, Hana A, Standhardt H, Hertel F, Lovblad KO.

Bull Soc Sci Med Grand Duche Luxemb.2014 ;(1):15-25

Physicians from the CHL present a case of intraparenchymal radioinduced cyst of the brain observed in our department. It is a rare and relatively benign pathology which is usually treated conservatively or by surgery. We emphasize long-term imaging follow up in patients treated by radiosurgery, which can lead to the demonstration of multiple adverse events such as tumefactive cyst formation.



Number of students and MEVS in 2014 :

3 Students

8 Junior doctors

Number of publications :

18 Articles or contributions to articles in national and international journals

HEALTHCARE

Health care encompasses all activities related to the health of patients and not performed by medical doctors. Nurses, nutrition therapists, psychologists, physical therapists are all health care professionals, essentials to the functioning of the hospital and the best of care for patients. These professionals represent a workforce of more than 1,300 people at the Centre Hospitalier de Luxembourg.



➤ Education

Training and supporting the education of young professionals is of paramount importance for all CHL departments and services in charge of health care. In 2014, the nursing department organized more than 1,000 internships, ranging from jobshadowing for high school pupils, to nursing observation internships for students, either in nursing school and aiming at becoming a nurse, or in their first year of medical studies. Acknowledging the quality of the training provided, several formal agreements have been signed with Luxembourgish and Belgian nursing schools. The physical therapy unit is also strongly involved in training, welcoming 83 students in 2014, mainly thanks to the close links established with some Belgian Institutions and Universities for physical therapy.

➤ Research

Realizing the importance of clinical research for improving the quality of care and services given to the patients, healthcare services and departments are increasing their involvement in research projects and activities. Thanks to the support given by the direction of the CHL to professionals willing to pursue their studies and projects, 35 research works were presented in 2014, from dissertations to theses or student papers.

➤ 2014 | Research projects | Highlights

The role of strength exercises in the rehabilitation of muscle dysfunction in chronic heart failure

Patrick Feiereisen, Physical Therapist

Chronic heart failure induces a decrease of blood flow to peripheral muscle, leading to muscular atrophy. This muscle atrophy plays a major part in patient symptoms: exercise intolerance, fatigue, breathing difficulties. The aim of the study was to identify which training programs could prevent these peripheral muscular dysfunctions most efficiently. A strong emphasis was put on strengthening exercise, a training method seldom used in the rehabilitation of patients with chronic heart failure at the start of the study. Recognizing the importance of the study and the results achieved at the CHL, international guidelines are nowadays acknowledging the importance of strengthening exercises as an integral part of the rehabilitation of patient with chronic heart failure, partly thanks to the results of the research done at the CHL.



Visions of geriatrics at the Centre Hospitalier de Luxembourg

Frédéric Mennel, Nurse

Aging is a public health challenge involving the creation of specialized services and the adaptation of current structures to answer the specific needs of elderly people. This study aims at better understanding the challenges facing health care professionals in their adaptation to an aging population.

How to evaluate and deal with child pain

Angélique Gallo, Nurse in anesthesia and Valérie Loutsch, Pediatric Nurse

The objective of the study was to design a method of evaluation of pain in children, which could be used in all pathologies and would bring new possibilities to help deal with the pain. This study contributed to the improvement of the relation between children in pain and their parents.





PUBLICATIONS

ACADEMIC TITLES

CHAPTERS IN BOOKS

PRESENTATIONS AT
CONGRESSES

PUBLICATIONS

Surname	Name	Service	Title	Authors	Publication /Reference	Impact Factor 2014
Abou Hamdan	Kamal	Pneumologie	Asthma and smoking: a dangerous mix	Charpentier-Chaix C, Abou Hamdan K, Wirtz G, Morisset M, Schlessner M	Le Courrier des Addictions 2014 Jan; 1	
Arendt	Victor	Maladies Infectieuses	Increase in transmitted resistance to non-nucleoside reverse transcriptase inhibitors among newly diagnosed HIV-1 infections in Europe.	in Frentz D, Van de Vijver DA, Abecasis AB, Albert J, Hamouda O, Jørgensen LB, Kücherer C, Struck D, Schmit JC, Vercauteren J, Åsjö B, Balotta C, Beshkov D, Camacho RJ, Clotet B, Coughlan S, Griskevicius A, Grossman Z, Horban A, Kolupajeva T, Korn K, Kostrikis LG, Liitsola K, Linka M, Nielsen C, Otelea D, Paraskevis D, Paredes R, Poljak M, Puchhammer-Stöckl E, Sönnnerborg A, Stanekova D, Stanojevic M, Van Wijngaerden E, Wensing AM, Boucher CA; SPREAD Programme.	BMC Infect Dis. 2014 Jul 21;14:407	2,56
Arendt	Victor	Maladies Infectieuses	Patterns of transmitted HIV drug resistance in Europe vary by risk group	in Frentz D, van de Vijver D, Abecasis A, Albert J, Hamouda O, Jørgensen L, Kücherer C, Struck D, Schmit JC, Vercauteren J, Asjö B, Balotta C, Bergin C, Beshkov D, Camacho R, Clotet B, Griskevicius A, Grossman Z, Horban A, Kolupajeva T, Korn K, Kostrikis L, Linka KL, Nielsen C, Otelea D, Paraskevis D, Paredes R, Poljak M, Puchhammer-Stöckl E, Sönnnerborg A, Stanekova D, Stanojevic M, Vandamme AM, Boucher C, Wensing A; SPREAD Programme	PLoS One. 2014 Apr 10;9(4):e94495	3,53
Arendt	Victor	Maladies Infectieuses	Virological and immunological outcomes of elvitegravir-based regimen in a treatment-naïve HIV-2-infected patient	Zheng Y, Lambert C, Arendt V, Seguin-Devaux C	AIDS. 2014 Sep 24;28(15):2329-31	6,55
Azagra	Juan S.	Chirurgie générale	Minimally invasive management of postoperative esophagojejunal anastomotic leak	Facy O, Goergen M, Poulain V, Heieck F, Lens V, Azagra JS.	Surg Laparosc Endosc Percutan Tech. 2014 Apr;24(2):183-6	0,93
Bache	Manon	Néonatalogie	Effects of pre-feeding oral stimulation on oral feeding in preterm infants: a randomized clinical trial.	Bache M, Pizon E, Jacobs J, Vaillant M, Lecomte A	Early Hum Dev. 2014 Mar;90(3):125-9	1,93
Backes	François	Traumatologie	Iliopubic subcutaneous plate osteosynthesis for osteoporotic fractures of the anterior pelvic ring. An alternative to the supra-acetabular external fixator.	Gerich T, Bogdan A, Backes F, Gillman T, Seil R, Pape D.	Bull Soc Sci Med Grand Duche Luxemb. 2014;(1):7-14.	
Backes	François	Traumatologie	Iliopubic subcutaneous plate osteosynthesis for osteoporotic fractures of the anterior pelvic ring. An alternative to the supra-acetabular external fixator.	Gerich T, Bogdan A, Backes F, Gillman T, Seil R, Pape D	Bull Soc Sci Med Grand Duche Luxemb. 2014;(1):7-14	
Beissel	Jean	Cardiologie	Cardiovascular health: a cross-national comparison between the Maine Syracuse Study (Central New York, USA) and ORISCAV-LUX (Luxembourg).	Crichton GE, Elias MF, Davey A, Sauvageot N, Delagardelle C, Beissel J, Alkerwi A.	BMC Public Health. 2014 Mar 15;14:253	2,32
Berchem	Guy	Hématologie-Cancérologie	Autophagic degradation of GZMB/granzyme B: a new mechanism of hypoxic tumor cell escape from natural killer cell-mediated lysis	Viry E, Baginska J, Berchem G, Noman MZ, Medves S, Chouaib S, Janji B.	Autophagy. 2014 Jan;10(1):173-5	11,42
Berchem	Guy	Hématologie-Cancérologie	Autophagy: an adaptive metabolic response to stress shaping the antitumor immunity	Viry E, Paggetti J, Baginska J, Mgrditchian T, Berchem G, Moussay E, Janji B	Biochem Pharmacol. 2014 Nov 1;92(1):31-42	4,65
Berchem	Guy	Hématologie-Cancérologie	BAG6/BAT3 modulates autophagy by affecting EP300/p300 intracellular localization.	Sebti S, Prébois C, Pérez-Gracia E, Bauvy C, Desmots F, Pirot N, Gongora C, Bach AS, Hubberstey AV, Palissot V, Berchem G, Codogno P, Linares LK, Liaudet-Coopman E, Patingre S	Autophagy. 2014 Jul;10(7):1341-2.	11,42
Berchem	Guy	Hématologie-Cancérologie	BAT3 modulates p300-dependent acetylation of p53 and autophagy-related protein 7 (ATG7) during autophagy	Sebti S, Prébois C, Pérez-Gracia E, Bauvy C, Desmots F, Pirot N, Gongora C, Bach AS, Hubberstey AV, Palissot V, Berchem G, Codogno P, Linares LK, Liaudet-Coopman E, Patingre S.	Proc Natl Acad Sci U S A. 2014 Mar 18;111(11):4115-20	9,80
Berchem	Guy	Hématologie-Cancérologie	Bronchial airway gene expression in smokers with lung or head and neck cancer	Van Dyck E, Nazarov PV, Muller A, Nicot N, Bosseler M, Pierson S, Van Moer K, Palissot V, Mascaux C, Knolle U, Ninane V, Nati R, Bremnes RM, Vallar L, Berchem G, Schlessner M.	Cancer Med. 2014 Apr;3(2):322-36	
Berchem	Guy	Hématologie-Cancérologie	Disruption of autophagy by the histone deacetylase inhibitor MGCD0103 and its therapeutic implication in B-cell chronic lymphocytic leukemia	El-Khoury V, Pierson S, Szwarcbart E, Brons NH, Roland O, Cherrier-De Wilde S, Plawny L, Van Dyck E, Berchem G	Leukemia. 2014 Aug;28(8):1636-46	9,37

Surname	Name	Service	Title	Authors	Publication /Reference	Impact Factor 2014
Berchem	Guy	Hématologie-Cancérologie	First-line crizotinib versus chemotherapy in ALK-positive lung cancer.	in Solomon BJ, Mok T, Kim DW, Wu YL, Nakagawa K, Mekhail T, Felip E, Cappuzzo F, Paolini J, Usari T, Iyer S, Reisman A, Wilner KD, Tursi J, Blackhall F; PROFILE 1014 Investigators.	N Engl J Med. 2014 Dec 4;371(23):2167-77	54,42
Berchem	Guy	Hématologie-Cancérologie	Two biomarker-directed randomized trials in European and Chinese patients with nonsmall-cell lung cancer: the BRCA1-RAP80 Expression Customization (BREC) studies.	in Moran T, Wei J, Cobo M, Qian X, Domine M, Zou Z, Bover I, Wang L, Provencio M, Yu L, Chaib I, You C, Massuti B, Song Y, Vergnenegre A, Lu H, Lopez-Vivanco G, Hu W, Robinet G, Yan J, Insa A, Xu X, Majem M, Chen X, de Las Peñas R, Karachaliou N, Sala MA, Wu Q, Isla D, Zhou Y, Baize N, Zhang F, Garde J, Germonpre P, Rauh S, ALHusaini H, Sanchez-Ronco M, Drozdowskyj A, Sanchez JJ, Camps C, Liu B, Rosell R; Spanish Lung Cancer Group; French Lung Cancer Group; Comprehensive Cancer Centre of Drum Tower Hospital in Nanjing	Ann Oncol. 2014 Nov;25(11):2147-55	6,57
Bernard	Florian	Neurochirurgie	Improving the Consistency of Manual Deep Brain Structure Segmentations by Combining Variational Interpolation, Simultaneous Multi-Modality Visualisation and Histogram Equilisation	Bernard F, Gemmar P, Husch A, Saleh C, Neb H, Doods G, Hertel F	Biomed Tech 2014; 59 (s1) © 2014 by Walter de Gruyter Boston. DOI 10.1515/bmt-2014-4254	1,23
Bernard	Florian	Neurochirurgie	Influence of the electrode-electrolyte interface on the electric field in Deep Brain Stimulation.	Bremm RP, Bernard F, Husch A, Neb H, Gemmar P, Koch P, Hertel F	Biomed Tech 2014; 59 (s1)	1,23
Berthold	Christophe	Neurochirurgie	DTI of the visual pathway - white matter tracts and cerebral lesions	Hana A, Husch A, Gunness VR, Berthold C, Doods G, Boecher Schwarz H, Hertel F	J Vis Exp. 2014 Aug 26;(90).	
Berthold	Christophe	Neurochirurgie	NOAC and intracerebral bleeding--presentation of four cases and review of the literature	Hana A, Berthold C, Gunness VR, Doods G, Standhardt H, Koy J, Matgé G, Boecher-Schwarz H, Hertel F.	Bull Soc Sci Med Grand Duche Luxemb. 2014;(1):57-66	
Berthold	Christophe	Neurochirurgie	Posterior fossa mass in immunosuppressed patient	Gunness VR, Hana A, Berthold C, Doods G, Hertel F	Bull Soc Sci Med Grand Duche Luxemb. 2014;(3):25-30.	
Boecher-Schwarz	Hans	Neurochirurgie	DTI of the visual pathway - white matter tracts and cerebral lesions	Hana A, Husch A, Gunness VR, Berthold C, Hana A, Doods G, Boecher Schwarz H, Hertel F	J Vis Exp. 2014 Aug 26;(90).	
Boecher-Schwarz	Hans	Neurochirurgie	NOAC and intracerebral bleeding--presentation of four cases and review of the literature.	Hana A, Berthold C, Gunness VR, Hana A, Doods G, Standhardt H, Koy J, Matgé G, Boecher-Schwarz H, Hertel F.	Bull Soc Sci Med Grand Duche Luxemb. 2014;(1):57-66	
Bogdan	Oana-Alina	Traumatologie	Iliopubic subcutaneous plate osteosynthesis for osteoporotic fractures of the anterior pelvic ring. An alternative to the supra-acetabular external fixator.	Gerich T, Bogdan A, Backes F, Gillman T, Seil R, Pape D.	Bull Soc Sci Med Grand Duche Luxemb. 2014;(1):7-14	
Bogdan	Alina	Traumatologie	Iliopubic subcutaneous plate osteosynthesis for osteoporotic fractures of the anterior pelvic ring. An alternative to the supra-acetabular external fixator.	Gerich T, Bogdan A, Backes F, Gillman T, Seil R, Pape D	Bull Soc Sci Med Grand Duche Luxemb. 2014;(1):7-14	
Bottu	Jean	Néonatalogie	Familial very long chain acyl-CoA dehydrogenase deficiency as a cause of neonatal sudden infant death: Improved survival by prompt diagnosis	Scalais E, Bottu J, Wanders RJ, Ferdinandusse S, Waterham HR, De Meirleir L	Am J Med Genet A. 2015 Jan;167(1):211-4	2,04
Boulanger	Thierry	Neuroradiologie	Radioinduced brain cyst: case report.	Doods G, Molitor P, Boulanger T, Hana A, Standhardt H, Hertel F, Lovblad KO.	Bull Soc Sci Med Grand Duche Luxemb. 2014;(1):15-25.	
Cavez	Nicolas	Radiologie	Primary aortic thrombosis: role of enhanced multislice CT demonstrated in three exceptional cases	Verbeeck N, Cavez N, Plawny L, Weber J, Lens V	JBR-BTR. 2014 Mar-Apr;97(2):76-80	
Chapurette	Rudy	Radiologie	Reduction of the six-minute walk distance in children with sickle cell disease is correlated with silent infarct: results from a cross-sectional evaluation in a single center in Belgium	Dedeken L, Chapurette R, Lê PQ, Heijmans C, Devalck C, Huybrechts S, Ziereisen F, Hanssens L, Rozen L, Noubououssie D, Mujinga MN, Ferster A	PLoS One. 2014 Oct 2;9(9):e108922	3,53
Charpentier-Chaix	Catherine	Pneumologie	Asthma and smoking: a dangerous mix	Charpentier-Chaix C, Abou Hamdan A, Wirtz G, Morisset M, Schlessler M	Le Courrier des Addictions 2014 Jan; 1	
Charpentier-Chaix	Catherine	Pneumologie	Identification and isolation of a Fel d 1-like molecule as a major rabbit allergen.	Hilger C, Kler S, Arumugam K, Revets D, Muller CP, Charpentier C, Lehnert C, Morisset M, Hentges F.	J Allergy Clin Immunol. 2014 Mar;133(3):759-66	11,24
Codreanu	Andrei	Cardiologie	Effects of blood T1 on extracellular volume calculation	Codreanu A, Ferry P, Beaumont M, Marie PY.	JACC Cardiovasc Imaging. 2014 Aug;7(8):848-9	6,98
de Beaufort	Carine	Pédiatrie	Assessment and monitoring of glycemic control in children and adolescents with diabetes	Rewers MJ, Pillay K, de Beaufort C, Craig ME, Hanas R, Acerini CL, Maahs DM	Pediatr Diabetes. 2014 Sep;15 Suppl 20:102-14	2,13

Surname	Name	Service	Title	Authors	Publication /Reference	Impact Factor 2014
de Beaufort	Carine	Pédiatrie	Diabetes in adolescence	Cameron FJ, Amin R, de Beaufort C, Codner E, Acerini CL	Pediatr Diabetes. 2014 Sep;15 Suppl 20:245-56	2,13
de Beaufort	Carine	Pédiatrie	Hydrolyzed infant formula and early β -cell autoimmunity: a randomized clinical trial	in Knip M, Åkerblom HK, Becker D, Dosch HM, Dupre J, Fraser W, Howard N, Ilonen J, Krischer JP, Kordonouri O, Lawson ML, Palmer JP, Savilahti E, Vaarala O, Virtanen SM; TRIGR Study Group	JAMA. 2014 Jun 11;311(22):2279-87	30,39
de Beaufort	Carine	Pédiatrie	Impact of continuous glucose monitoring on quality of life, treatment satisfaction, and use of medical care resources: analyses from the SWITCH study	in Hommel E, Olsen B, Battelino T, Conget I, Schütz-Fuhrmann I, Hoogma R, Schierloh U, Sulli N, Gough H, Castañeda J, de Portu S, Bolinder J; SWITCH Study Group	Acta Diabetol. 2014 Oct;51(5):845-51	3,68
de Beaufort	Carine	Pédiatrie	Introduction to ISPAD Clinical Practice Consensus Guidelines 2014 Compendium	Acerini C, Craig ME, de Beaufort C, Maahs DM, Hanas R	Pediatr Diabetes. 2014 Sep;15 Suppl 20:1-3	2,13
de Beaufort	Carine	Pédiatrie	Introduction to the limited care guidance appendix.	Acerini CL, Craig ME, de Beaufort C, Maahs DM, Pillay K, Hanas R	Pediatr Diabetes. 2014 Sep;15 Suppl 20:279-80	2,13
de Beaufort	Carine	Pédiatrie	Joining forces: a call for greater collaboration to study new medicines in children and adolescents with type 2 diabetes.	Karres J, Pratt V, Guettier JM, Temeck J, Tamborlane WV, Dunger D, Bejnariu C, De Beaufort C, Tomasi P	Diabetes Care. 2014 Oct;37(10):2665-7	7,74
de Beaufort	Carine	Pédiatrie	Recruitment and retention of participants for an international type 1 diabetes prevention trial: a coordinators' perspective	in Franciscus M, Nucci A, Bradley B, Suomalainen H, Greenberg E, Laforte D, Kleemola P, Hyytinen M, Salonen M, Martin MJ, Catte D, Catteau J; TRIGR Investigators	Clin Trials. 2014 Apr;11(2):150-8	1,94
de Beaufort	Carine	Pédiatrie	Seasonal variation in month of diagnosis in children with type 1 diabetes registered in 23 European centers during 1989-2008: little short-term influence of sunshine hours or average temperature.	Patterson C, Gyürüs E, Rosenbauer J, Cinek O, Neu A, Schober E, Parslow R, Joner G, Svensson J, Castell C, Bingley P, Schoenle E, Jarosz-Chobot P, Urbonaité B, Rothe U, Kržišnik C, Ionescu-Tirgoviste C, Weets I, Kocova M, Stipanovic G, Samardzic M, de Beaufort C, Green A, Soltész G, Dahlquist G	Pediatr Diabetes. 2014 Oct 15	2,13
de Beaufort	Carine	Pédiatrie	Use of vitamin D supplements during infancy in an international feeding trial	in Lehtonen E, Ormiston A, Nucci A, Cuthbertson D, Sorkio S, Hyytinen M, Alahuhta K, Berseth C, Salonen M, Taback S, Franciscus M, González-Frutos T, Korhonen TE, Lawson ML, Becker DJ, Krischer JP, Knip M, Virtanen SM; TRIGR Investigators	Public Health Nutr. 2014 Apr;17(4):810-22	2,48
De Meirleir	Linda	Pédiatrie	Familial very long chain acyl-CoA dehydrogenase deficiency as a cause of neonatal sudden infant death: Improved survival by prompt diagnosis	Scalais E, Bottu J, Wanders RJ, Ferdinandusse S, Waterham HR, De Meirleir L.	Am J Med Genet A. 2015 Jan;167(1):211-4	2,04
De Wilde	Sigrid	Hématologie-Cancérologie	Disruption of autophagy by the histone deacetylase inhibitor MGCD0103 and its therapeutic implication in B-cell chronic lymphocytic leukemia	El-Khoury V, Pierson S, Szwarcbart E, Brons NH2, Roland O, Cherrier-De Wilde S, Plawny L, Van Dyck E, Berchem G	Leukemia. 2014 Aug;28(8):1636-46	9,37
Delagardelle	Charles	Cardiologie	Cardiovascular health: a cross-national comparison between the Maine Syracuse Study (Central New York, USA) and ORISCAV-LUX (Luxembourg).	Crichton GE, Elias MF, Davey A, Sauvageot N, Delagardelle C, Beissel J, Alkerwi A.	BMC Public Health. 2014 Mar 15;14:253	2,32
Delagardelle	Charles	Cardiologie	Physical activity promotion for secondary prevention in patients with non-communicable diseases: the situation in the Grand-Duchy of Luxembourg.	Lion A, Urhausen A, Delagardelle C, Seil R, Theisen D.	Bull Soc Sci Med Grand Duche Luxemb. 2014;(3):57-72	
Dicato	Mario	Hématologie-Cancérologie	5-aza-2'-deoxycytidine-mediated c-myc Down-regulation triggers telomere-dependent senescence by regulating human telomerase reverse transcriptase in chronic myeloid leukemia	Grandjennette C, Schneckeburger M, Karius T, Ghelfi J, Gaigneaux A, Henry E, Dicato M, Diederich M	Neoplasia. 2014 Jun;16(6):511-28	5,39
Dicato	Mario	Hématologie-Cancérologie	Anti-inflammatory and anticancer drugs from nature.	Orlikova B, Legrand N, Panning J, Dicato M, Diederich M	Cancer Treat Res. 2014;159:123-43	
Dicato	Mario	Hématologie-Cancérologie	Antiproliferative and proapoptotic activities of 4-hydroxybenzoic acid-based inhibitors of histone deacetylases	Seidel C, Schneckeburger M, Dicato M, Diederich M	Cancer Lett. 2014 Feb 1;343(1):134-46	5,01
Dicato	Mario	Hématologie-Cancérologie	Celecoxib prevents curcumin-induced apoptosis in a hematopoietic cancer cell model	Sobolewski C, Muller F, Cerella C, Dicato M, Diederich M	Mol Carcinog. 2014 May 5.	4,77
Dicato	Mario	Hématologie-Cancérologie	Comment guérir du cancer 1864-2014	Dicato M	Bull Soc Sci Med Grand Duche Luxemb. 2014:79-86	
Dicato	Mario	Hématologie-Cancérologie	Epigenetic modulators from "The Big Blue": a treasure to fight against cancer	Schneckeburger M, Dicato M, Diederich M	Cancer Lett. 2014 Sep 1;351(2):182-97	5,01
Dicato	Mario	Hématologie-Cancérologie	Eurycomanone and eurycomanol from Eurycoma longifolia Jack as regulators of signaling pathways involved in proliferation, cell death and inflammation	Hajjouli S, Chateauvieux S, Teiten MH, Orlikova B, Schumacher M, Dicato M, Choo CY, Diederich M	Molecules. 2014 Sep 16;19(9):14649-66	2,09

Surname	Name	Service	Title	Authors	Publication /Reference	Impact Factor 2014
Dicato	Mario	Hématologie-Cancérologie	Evaluation of risk factors predicting chemotherapy-related nausea and vomiting: results from a European prospective observational study	Molassiotis A, Aapro M, Dicato M, Gascon P, Novoa SA, Isambert N, Burke TA, Gu A, Roila F	J Pain Symptom Manage. 2014 May;47(5):839-848.e4	2,73
Dicato	Mario	Hématologie-Cancérologie	Hybrid Curcumin Compounds: A New Strategy for Cancer Treatment	Teiten MH, Dicato M, Diederich M	Molecules. 2014 Dec 12;19(12):20839-20863	2,09
Dicato	Mario	Hématologie-Cancérologie	Modulatory roles of glycolytic enzymes in cell death	Cerella C, Dicato M, Diederich M	Biochem Pharmacol. 2014 Nov 1;92(1):22-30	4,65
Dicato	Mario	Hématologie-Cancérologie	Novel inhibitors of human histone deacetylases: design, synthesis and bioactivity of 3-alkenylcoumarines	Seidel C, Schnekenburger M, Zwergel C, Gaascht F, Mai A, Dicato M, Kirsch G, Valente S, Diederich M	Bioorg Med Chem Lett. 2014 Aug 15;24(16):3797-801	2,95
Dicato	Mario	Hématologie-Cancérologie	Plant-derived epigenetic modulators for cancer treatment and prevention	Schnekenburger M, Dicato M, Diederich M	Biotechnol Adv. 2014 Nov 1;32(6):1123-32	8,90
Dicato	Mario	Hématologie-Cancérologie	Plumbagin modulates leukemia cell redox status	Gaascht F, Teiten MH, Cerella C, Dicato M, Bagrel D, Diederich M	Molecules. 2014 Jul 10;19(7):10011-32	2,09
Dicato	Mario	Hématologie-Cancérologie	Valproic acid regulates erythro-megakaryocytic differentiation through the modulation of transcription factors and microRNA regulatory micro-networks	Trécul A, Morceau F, Gaigneaux A, Schnekenburger M, Dicato M, Diederich M.	Biochem Pharmacol. 2014 Nov 15;92(2):299-311	4,65
Diederich	Nico	Neurologie	Analysis of mitochondrial membrane potential in idiopathic Parkinson's Disease: A case-control study	Antony P, Boyd O, Trefois C, Ostaszewski M, Baumuratov A, Diederich NJ	Mov Disord 2014, 29 [Suppl 1]: S3. P008	5,63
Diederich	Nico	Neurologie	Are patients with Parkinson's disease blind to blindsight?	Diederich NJ, Stebbins G, Schiltz C, Goetz CG	Brain. 2014;137:1838-49	10,23
Diederich	Nico	Neurologie	Dysautonomia in narcolepsy: evidence by questionnaire assessment.	Klein G, Burghaus L, Vaillant M, Pieri V, Fink GR, Diederich NJ	J Clin Neurol. 2014; 10: 314-9	1,81
Diederich	Nico	Neurologie	Integrating Pathways of Parkinson's Disease in a Molecular Interaction Map.	Fujita KA, Ostaszewski M, Matsuoka Y, Ghosh S, Glaab E, Trefois C, Crespo I, Perumal TM, Jurkowski W, Antony PM, Diederich NJ, Buttini M, Kodama A, Satagopam VP, Eifes S, Del Sol A, Schneider R, Kitano H, Balling R	Mol Neurobiol. 2014; 49: 88-102	5,29
Diederich	Nico	Neurologie	Primary vision and facial emotion recognition in early Parkinson's disease.	Hipp G, Diederich NJ, Pieri V, Vaillant M	J Neurol Sci. 2014; 338: 178-82	2,26
Dooms	Georges	Neuroradiologie	DTI of the visual pathway - white matter tracts and cerebral lesions	Hana A, Husch A, Gunness VR, Berthold C, Hana A, Dooms G, Boecher Schwarz H, Hertel F.	J Vis Exp. 2014 Aug 26;(90).	
Dooms	Georges	Neuroradiologie	Holmes tremor in a patient with progressive multifocal leukoencephalopathy	Gunness VR, Dooms G, Wauschkuhn B, Feiden W, Hertel F.	Surg Neurol Int. 2014 Sep 5;5(Suppl 8):S413-5.	
Dooms	Georges	Neuroradiologie	NOAC and intracerebral bleeding--presentation of four cases and review of the literature	Hana A, Berthold C, Gunness VR, Hana A, Dooms G, Standhardt H, Koy J, Matgé G, Boecher-Schwarz H, Hertel F.	Bull Soc Sci Med Grand Duche Luxemb. 2014;(1):57-66. Review	
Dooms	Georges	Neuroradiologie	Posterior fossa mass in immunosuppressed patient.	Gunness VR, Hana A, Berthold C, Dooms G, Hertel F	Bull Soc Sci Med Grand Duche Luxemb. 2014;(3):25-30	
Dooms	Georges	Neuroradiologie	Radioinduced brain cyst: case report.	Dooms G, Molitor P, Boulanger T, Hana A, Standhardt H, Hertel F, Lovblad KO.	Bull Soc Sci Med Grand Duche Luxemb. 2014;(1):15-25. French.	
Dooms	Georges	Radiologie	Improving the Consistency of Manual Deep Brain Structure Segmentations by Combining Variational Interpolation, Simultaneous Multi-Modality Visualisation and Histogram Equilisation	Bernard F, Gemmar P, Husch A, Saleh C, Neb H, Dooms G, Hertel F	Biomed Tech 2014; 59 (s1) © 2014 by Walter de Gruyter Boston. DOI 10.1515/bmt-2014-4254	1,23
Droste	Dirk	Neurologie	Advice on lifestyle changes (diet, red wine and physical activity) does not affect internal carotid and middle cerebral artery blood flow velocity in patients with carotid arteriosclerosis in a randomized controlled trial	Droste DW, Iliescu C, Vaillant M, Gantenbein M, De Bremaeker N, Lieunard C, Velez T, Meyer M, Guth T, Kuemmerle A, Chioti A	Cerebrovasc Dis. 2014;37(5):368-75	3,69
Droste	Dirk	Neurologie	Stroke awareness in luxemburg: deficit concerning symptoms and risk factors	Droste DW, Safo J, Metz RJ, Osada N	Clin Med Insights Cardiol. 2014 Nov 10;8(Suppl 2):9-13	
Duhem	Caroline	Hématologie-Cancérologie	Outcome and management of pregnancies in severe chronic neutropenia patients by the European Branch of the Severe Chronic Neutropenia International Registry	Zeidler C, Grote UA, Nickel A, Brand B, Carlsson G, Cortesão E, Dufour C, Duhem C, Notheis G, Papadaki HA, Tamary H, Tjønnfjord GE, Tucci F, Van Droogenbroeck J, Vermynen C, Voglova J, Xicoy B, Welte K.	Haematologica. 2014 Aug;99(8):1395-402	5,86

Surname	Name	Service	Title	Authors	Publication /Reference	Impact Factor 2014
Filippitzi	Foteini	Radiologie	Lunate dislocation	Filippitzi F, Dallaudière B, Omoumi P, Lecouvet FE, Lefere M, Vande Berg B, Larbi A	JBR-BTR. 2014 Sep-Oct;97(5):318	
Fogen	Frédéric	Soins Palliatifs	Promoting palliative care in the community: Production of the primary palliative care toolkit by the European Association of Palliative Care Taskforce in primary palliative care.	Murray SA, Firth A, Schneider N, Van den Eynden B, Gomez-Batiste X, Brogaard T, Villanueva T, Abela J, Eychmuller S, Mitchell G, Downing J, Sallnow L, van Rijswijk E, Barnard A, Lynch M, Fogen F, Moine S.	Palliat Med. 2015 Feb;29(2):101-11. Epub 2014 Nov 13	2,84
Gerich	Torsten	Traumatologie	Fractures of the knee joint in the elderly: osteosynthesis versus joint replacement.	Pape D, Hoffmann A, Gerich T, Van der Kerkhofe M, Weber M, Pape HC.	Orthopade. 2014 Apr;43(4):365-73	0,66
Gerich	Torsten	Traumatologie	Iliopubic subcutaneous plate osteosynthesis for osteoporotic fractures of the anterior pelvic ring. An alternative to the supra-acetabular external fixator.	Gerich T, Bogdan A, Backes F, Gillman T, Seil R, Pape D.	Bull Soc Sci Med Grand Duche Luxemb. 2014;(1):7-14.	
Gerich	Torsten	Traumatologie	Iliopubic subcutaneous plate osteosynthesis for osteoporotic fractures of the anterior pelvic ring. An alternative to the supra-acetabular external fixator.	Gerich T, Bogdan A, Backes F, Gillman T, Seil R, Pape D	Bull Soc Sci Med Grand Duche Luxemb. 2014;(1):7-14	
Gerich	Torsten	Traumatologie	Intra-articular fractures of the distal humerus : aspects of fracture treatment in geriatric patients.	Gerich TG	Orthopade. 2014 Apr;43(4):347-52	0,66
Gerich	Torsten	Traumatologie	Open wedge osteotomy of the tibial head. Management of vascular complications.	Gerich T, Lens V, Seil R, Pape D.	Orthopade. 2014 Nov;43(11):1008-15	0,66
Gillman	Tracey	Orthopédie	Iliopubic subcutaneous plate osteosynthesis for osteoporotic fractures of the anterior pelvic ring. An alternative to the supra-acetabular external fixator.	Gerich T, Bogdan A, Backes F, Gillman T, Seil R, Pape D.	Bull Soc Sci Med Grand Duche Luxemb. 2014;(1):7-14.	
Gillman	Tracey	Traumatologie	Iliopubic subcutaneous plate osteosynthesis for osteoporotic fractures of the anterior pelvic ring. An alternative to the supra-acetabular external fixator.	Gerich T, Bogdan A, Backes F, Gillman T, Seil R, Pape D	Bull Soc Sci Med Grand Duche Luxemb. 2014;(1):7-14	
Goergen	Martine	Chirurgie générale	Minimally invasive management of postoperative esophagojejunal anastomotic leak	Facy O, Goergen M, Poulain V, Heieck F, Lens V, Azagra JS.	Surg Laparosc Endosc Percutan Tech. 2014 Apr;24(2):183-6	0,93
Groben	Laurent	Cardiologie	Localizing the critical isthmus of postinfarct ventricular tachycardia: the value of pace-mapping during sinus rhythm	de Chillou C, Groben L, Magnin-Poull I, Andronache M, MagdiAbbas M, Zhang N, Abdelaal A, Ammar S, Sellal JM, Schwartz J, Brembilla-Perrot B, Aliot E, Marchlinski FE.	Heart Rhythm. 2014 Feb;11(2):175-81	4,91
Gunness	Vimal	Neurochirurgie	DTI of the visual pathway - white matter tracts and cerebral lesions	Hana A, Husch A, Gunness VR, Berthold C, Hana A, Doods G, Boecher Schwarz H, Hertel F	J Vis Exp. 2014 Aug 26;(90).	
Gunness	Vimal	Neurochirurgie	Holmes tremor in a patient with progressive multifocal leukoencephalopathy	Gunness VR, Doods G, Wauschkuhn B, Feiden W, Hertel F	Surg Neurol Int. 2014 Sep 5;5(Suppl 8):S413-5	
Gunness	Vimal	Neurochirurgie	NOAC and intracerebral bleeding--presentation of four cases and review of the literature	Hana A, Berthold C, Gunness VR, Hana A, Doods G, Standhardt H, Koy J, Matgé G, Boecher-Schwarz H, Hertel F.	Bull Soc Sci Med Grand Duche Luxemb. 2014;(1):57-66	
Gunness	Vimal	Neurochirurgie	Posterior fossa mass in immunosuppressed patient	Gunness VR, Hana A, Berthold C, Doods G, Hertel F.	Bull Soc Sci Med Grand Duche Luxemb. 2014;(3):25-30	
Hana	Adrian	Neurochirurgie	DTI of the visual pathway - white matter tracts and cerebral lesions	Hana A, Husch A, Gunness VR, Berthold C, Hana A, Doods G, Boecher Schwarz H, Hertel F.	J Vis Exp. 2014 Aug 26;(90)	
Hana	Adrian	Neurochirurgie	NOAC and intracerebral bleeding--presentation of four cases and review of the literature	Hana A, Berthold C, Gunness VR, Hana A, Doods G, Standhardt H, Koy J, Matgé G, Boecher-Schwarz H, Hertel F.	Bull Soc Sci Med Grand Duche Luxemb. 2014;(1):57-66	
Hana	Adrian	Neurochirurgie	Posterior fossa mass in immunosuppressed patient	Gunness VR, Hana A, Berthold C, Doods G, Hertel F.	Bull Soc Sci Med Grand Duche Luxemb. 2014;(3):25-30	
Hana	Adrian	Neurochirurgie	Radioinduced brain cyst: case report.	Doods G, Molitor P, Boulanger T, Hana A, Standhardt H, Hertel F, Lovblad KO.	Bull Soc Sci Med Grand Duche Luxemb. 2014;(1):15-25	
Hemmer	Robert	Maladies Infectieuses	A survey of ATRIPLA use in clinical practice as first-line therapy in HIV-positive persons in Europe	in Mocroft A, Reiss P, Rakhmanova A, Banhegyi D, Phillips AN, De Wit S, Ristola M, Lundgren JD, Garup J, Kirk O; EuroSIDA in EuroCOORD.	Infection. 2014 Aug;42(4):757-62	2,86
Hemmer	Robert	Maladies Infectieuses	Deteriorating renal function and clinical outcomes in HIV-positive persons	in Mocroft A, Ryom L, Begovac J, Monforte AD, Vassilenko A, Gatell J, Florence E, Ormaasen V, Kirk O, Lundgren JD; EuroSIDA in EuroCOORD	AIDS. 2014 Mar 13;28(5):727-37	6,55

Surname	Name	Service	Title	Authors	Publication /Reference	Impact Factor 2014
Hemmer	Robert	Maladies Infectieuses	Development of a definition for Rapid Progression (RP) of renal function in HIV-positive persons: the D:A:D study	in Kamara DA, Ryom L, Ross M, Kirk O, Reiss P, Morlat P, Moranne O, Fux CA, Mocroft A, Sabin C, Lundgren JD, Smith CJ; D:A:D study Group.	BMC Nephrol. 2014 Mar 25;15:51.	1,52
Hemmer	Robert	Maladies Infectieuses	Increase in transmitted resistance to non-nucleoside reverse transcriptase inhibitors among newly diagnosed HIV-1 infections in Europe.	in Frentz D, Van de Vijver DA, Abecasis AB, Albert J, Hamouda O, Jørgensen LB, Kücherer C, Struck D, Schmit JC, Vercauteren J, Åsjö B, Balotta C, Beshkov D, Camacho RJ, Clotet B, Coughlan S, Griskevicius A, Grossman Z, Horban A, Kolupajeva T, Korn K, Kostrikis LG, Liitsola K, Linka M, Nielsen C, Otelea D, Paraskevis D, Paredes R, Poljak M, Puchhammer-Stöckl E, Sönnnerborg A, Stanekova D, Stanojevic M, Van Wijngaerden E, Wensing AM, Boucher CA; SPREAD Programme.	BMC Infect Dis. 2014 Jul 21;14:407	2,56
Hemmer	Robert	Maladies Infectieuses	Increased incidence of antiretroviral drug discontinuation among patients with viremic hepatitis C virus coinfection and high hyaluronic acid, a marker of liver fibrosis	in Grint D, Peters L, Rockstroh JK, de Wit S, Mitsura VM, Knysz B, Pedersen C, Kirk O, Lundgren JD, Mocroft A; EuroSIDA in EuroCoord	AIDS. 2014 Feb 20;28(4):577-87	6,55
Hemmer	Robert	Maladies Infectieuses	Increased risk of cardiovascular disease (CVD) with age in HIV-positive men: a comparison of the D:A:D CVD risk equation and general population CVD risk equations	in Petoumenos K, Reiss P, Ryom L, Rickenbach M, Sabin CA, El-Sadr W, d'Arminio Monforte A, Phillips AN, De Wit S, Kirk O, Dabis F, Pradier C, Lundgren JD, Law MG; D:A:D study group.	HIV Med. 2014 Nov;15(10):595-603	3,45
Hemmer	Robert	Maladies Infectieuses	Letter to the editor: management of patients with Ebola virus disease in Europe: high-level isolation units should have a key role.	in Ippolito G, Puro V, Brouqui P, Lauria FN, Fusco FM; EuroNHID Consortium.	Euro Surveill. 2014 Dec 18;19(50):20993	4,65
Hemmer	Robert	Maladies Infectieuses	Patterns of transmitted HIV drug resistance in Europe vary by risk group	in Frentz D, van de Vijver D, Abecasis A, Albert J, Hamouda O, Jørgensen L, Kücherer C, Struck D, Schmit JC, Vercauteren J, Åsjö B, Balotta C, Bergin C, Beshkov D, Camacho R, Clotet B, Griskevicius A, Grossman Z, Horban A, Kolupajeva T, Korn K, Kostrikis L, Linka KL, Nielsen C, Otelea D, Paraskevis D, Paredes R, Poljak M, Puchhammer-Stöckl E, Sönnnerborg A, Stanekova D, Stanojevic M, Vandamme AM, Boucher C, Wensing A; SPREAD Programme	PLoS One. 2014 Apr 10;9(4):e94495	3,53
Hemmer	Robert	Maladies Infectieuses	Prognostic value of vitamin D level for all-cause mortality, and association with inflammatory markers, in HIV-infected persons	in Shepherd L, Souberbielle JC, Bastard JP, Fellahi S, Capeau J, Reekie J, Reiss P, Blaxhult A, Bickel M, Leen C, Kirk O, Lundgren JD, Mocroft A, Viard JP; EuroSIDA in EuroCOORD.	J Infect Dis. 2014 Jul 15;210(2):234-43	5,77
Hemmer	Robert	Maladies Infectieuses	Thrombocytopenia is associated with an increased risk of cancer during treated HIV disease	in Borges ÁH, Lundgren JD, Ridolfo A, Katlama C, Antunes F, Grzeszczuk A, Blaxhult A, Mitsura VM, Doroana M, Battegay M, Gargalianos P, Mocroft A; EuroSIDA in EuroCOORD	AIDS. 2014 Nov 13;28(17):2565-71	6,55
Hemmer	Robert	Maladies Infectieuses	Immuno-virological discordance and the risk of non-AIDS and AIDS events in a large observational cohort of HIV-patients in Europe	in Zoufaly A, Cozzi-Lepri A, Reekie J, Kirk O, Lundgren J, Reiss P, Jevtovic D, Machala L, Zangerle R, Mocroft A, Van Lunzen J; EuroSIDA in EuroCoord	PLoS One. 2014 Jan 31;9(1):e87160	3,53
Hemmer	Robert	Maladies Infectieuses	Trends in underlying causes of death in people with HIV from 1999 to 2011 (D:A:D): a multicohort collaboration	in Smith CJ, Ryom L, Weber R, Morlat P, Pradier C, Reiss P, Kowalska JD, de Wit S, Law M, el Sadr W, Kirk O, Friis-Moller N, Monforte Ad, Phillips AN, Sabin CA, Lundgren JD; D:A:D Study Group	Lancet. 2014 Jul 19;384(9939):241-8	39,20
Hentges	François	Immuno-Allergologie	Correlation of clinical monosensitivity to cod with specific IgE to enolase and aldolase	Kuehn A, Fischer J, Hilger C, Sparla C, Biedermann T, Hentges F	Ann Allergy Asthma Immunol. 2014 Dec; 113(6):670-671.e2	2,74
Hentges	François	Immuno-Allergologie	Fish allergens at a glance: variable allergenicity of parvalbumins, the major fish allergens	Kuehn A, Swoboda I, Arumugam K, Hilger C, Hentges F	Front Immunol. 2014 Apr 22;5:179	
Hentges	François	Immuno-Allergologie	Identification and isolation of a Fel d 1-like molecule as a major rabbit allergen	Hilger C, Kler S, Arumugam K, Revets D, Muller CP, Charpentier C, Lehnert C, Morisset M, Hentges F	J Allergy Clin Immunol. 2014 Mar;133(3): 759-66	11,24
Hentges	François	Immuno-Allergologie	Immune responses to inhaled mammalian allergens	Hentges F, Léonard C, Arumugam K, Hilger C	Front Immunol. 2014 May 21;5:234	
Hentges	François	Immuno-Allergologie	Les facteurs de risque d'allergie alimentaire chez l'adulte.	Morisset M, Morel-Codreanu F, Hilger C, Lehnert C, Kuehn A, Hentges F	Rev Fr Allergol 2014; 54(7):513-8	0,22
Hentges	François	Immuno-Allergologie	NK cell killer Ig-like receptor repertoire acquisition and maturation are strongly modulated by HLA class I molecules	Sleiman M, Brons NH, Kaoma T, Dogu F, Villa-Forte A, Lenoble P, Hentges F, Kotsch K, Gadola SD, Vilches C, Zimmer J.	J Immunol. 2014 Mar 15;192(6):2602-10	5,36

Surname	Name	Service	Title	Authors	Publication /Reference	Impact Factor 2014
Hertel	Frank	Neurochirurgie	DTI of the visual pathway - white matter tracts and cerebral lesions	Hana A, Husch A, Gunness VR, Berthold C, Hana A, Doods G, Boecher Schwarz H, Hertel F	J Vis Exp. 2014 Aug 26;(90).	
Hertel	Frank	Neurochirurgie	Glioblastomas are composed of genetically divergent clones with distinct tumourigenic potential and variable stem cell-associated phenotypes	Stieber D, Golebiewska A, Evers L, Lenkiewicz E, Brons NH, Nicot N, Oudin A, Bougnaud S, Hertel F, Bjerkvig R, Vallar L, Barrett MT, Niclou SP	Acta Neuropathol. 2014 Feb;127(2):203-19	9,78
Hertel	Frank	Neurochirurgie	Holmes tremor in a patient with progressive multifocal leukoencephalopathy	Gunness VR, Doods G, Wauschkuhn B, Feiden W, Hertel F	Surg Neurol Int. 2014 Sep 5;5(Suppl 8):S413-5	
Hertel	Frank	Neurochirurgie	Improving the Consistency of Manual Deep Brain Structure Segmentations by Combining Variational Interpolation, Simultaneous Multi-Modality Visualisation and Histogram Equilisation	Bernard F, Gemmar P, Husch A, Saleh C, Neb H, Doods G, Hertel F	Biomed Tech 2014; 59 (s1)	1,23
Hertel	Frank	Neurochirurgie	Influence of the electrode-electrolyte interface on the electric field in Deeob Brain Stimulation.	Bremm RP, Bernard F, Husch A, Neb H, Gemmar P, Koch P, Hertel F	Biomed Tech 2014; 59 (s1)	1,23
Hertel	Frank	Neurochirurgie	NOAC and intracerebral bleeding--presentation of four cases and review of the literature	Hana A, Berthold C, Gunness VR, Hana A, Doods G, Standhardt H, Koy J, Matgé G, Boecher-Schwarz H, Hertel F.	Bull Soc Sci Med Grand Duche Luxemb. 2014;(1):57-66	
Hertel	Frank	Neurochirurgie	Posterior fossa mass in immunosuppressed patient	Gunness VR, Hana A, Berthold C, Doods G, Hertel F.	Bull Soc Sci Med Grand Duche Luxemb. 2014;(3):25-30	
Hertel	Frank	Neurochirurgie	Radioinduced brain cyst: case report.	Doods G, Molitor P, Boulanger T, Hana A, Standhardt H, Hertel F, Lovblad KO.	Bull Soc Sci Med Grand Duche Luxemb. 2014;(1):15-25	
Hoffmann	Alexander	Orthopédie	Fractures of the knee joint in the elderly: osteosynthesis versus joint replacement.	Pape D, Hoffmann A, Gerich T, Van der Kerkhofe M, Weber M, Pape HC.	Orthopade. 2014 Apr;43(4):365-73	0,66
Husch	Andreas	Neurochirurgie	DTI of the visual pathway - white matter tracts and cerebral lesions	Hana A, Husch A, Gunness VR, Berthold C, Hana A, Doods G, Boecher Schwarz H, Hertel F	J Vis Exp. 2014 Aug 26;(90).	
Husch	Andreas	Neurochirurgie	Improving the Consistency of Manual Deep Brain Structure Segmentations by Combining Variational Interpolation, Simultaneous Multi-Modality Visualisation and Histogram Equilisation	Bernard F, Gemmar P, Husch A, Saleh C, Neb H, Doods G, Hertel F	Biomed Tech 2014; 59 (s1) © 2014 by Walter de Gruyter Boston. DOI 10.1515/bmt-2014-4254	1,23
Husch	Andreas	Neurochirurgie	Influence of the electrode-electrolyte interface on the electric field in Deeob Brain Stimulation.	Bremm RP, Bernard F, Husch A, Neb H, Gemmar P, Koch P, Hertel F	Biomed Tech 2014; 59 (s1)	1,23
Kerschen	Philippe	Neurologie	Primary angiitis of the central nervous system: description of the first fifty-two adults enrolled in the French cohort of patients with primary vasculitis of the central nervous system	de Boysson H, Zuber M, Naggara O, Neau JP, Gray F, Bousser MG, Crassard I, Touzé E, Couraud PO, Kerschen P, Oppenheim C, Detante O, Faivre A, Gaillard N, Arquizan C, Bienvenu B, Néel A, Guillevin L, Pagnoux C; French Vasculitis Study Group and the French NeuroVascular Society.	Arthritis Rheumatol. 2014 May;66(5):1315-26	7,87
Kerschen	Philippe	Neurologie	Palatal motor evoked potentials: description of a new technique	Ahdab R, Ayache SS, Farhat WH, Kerschen P, Lefaucheur JP	Clin Neurophysiol. 2014 May;125(5):1067-9	2,97
Kerschen	Philippe	Neurologie	Nosology and etiologies of acute longitudinally extensive transverse myelitis	in Collongues N, Papeix C, Zéphir H, Audoin B, Cotton F, Durand-Dubief F, Vukusic S, Brassat D, Laplaud D, Marignier R; Groupe Nomadmus	Rev Neurol (Paris). 2014 Jan;170(1):6-12	0,60
Koy	Jan	Neurochirurgie	Einfluss der tiefen Hirnstimulation des Nucleus subthalamicus auf exekutive Funktionen bei Patienten mit idiopathischem Parkinson-Syndrom unter Berücksichtigung von Apathie, Depressivität und Stimmung.	Lueken U, Stankevich Y, Goschke T, Schläpfer TE, Koy J, Reichmann H, Storch A, Wolz M	Fortschr Neurol Psychiatr 2014;82:386-393	0,76
Koy	Jan	Neurochirurgie	NOAC and intracerebral bleeding--presentation of four cases and review of the literature	Hana A, Berthold C, Gunness VR, Hana A, Doods G, Standhardt H, Koy J, Matgé G, Boecher-Schwarz H, Hertel F.	Bull Soc Sci Med Grand Duche Luxemb. 2014;(1):57-66	
Krüger	Rejko	Neurologie	Long-term outcome of deep brain stimulation in fragile X-associated tremor/ataxia syndrome	Weiss D, Mielke C, Wächter T, Bender B, Liscic RM, Scholten M, Naros G, Plewnia C, Gharabaghi A, Krüger R.	Parkinsonism Relat Disord. 2014 Dec 27. pii: S1353-8020(14)00489-1	4,12
Krüger	Rejko	Neurologie	The COMT Val/Met Polymorphism Modulates Effects of tDCS on Response Inhibition	Nieratschker V, Kiefer C, Giel K, Krüger R, Plewnia C.	Brain Stimul. 2014 Nov 24. pii: S1935-861X(14)00384-2	5,43
Krüger	Rejko	Neurologie	TREM2 R47H variant and risk of essential tremor: A cross-sectional international multicenter study	Ortega-Cubero S, Lorenzo-Betancor O, Lorenzo E, Agúndez JA, Jiménez-Jiménez FJ, Ross OA, Wurster I, Mielke C, Lin JJ, Coria F, Clarimon J, Ezquerro M, Brighina L, Annesi G, Alonso-Navarro H, García-Martin E, Gironell A, Marti MJ, Yueh KC, Wszolek ZK, Sharma M, Berg D, Krüger R, Pastor MA, Pastor P.	Parkinsonism Relat Disord. 2014 Dec 24. pii: S1353-8020(14)00484-2	4,12

Surname	Name	Service	Title	Authors	Publication /Reference	Impact Factor 2014
Lehners	Christiane	Immuno-Allergologie	Les facteurs de risque d'allergie alimentaire chez l'adulte.	Morisset M, Morel-Codreanu F, Hilger C, Lehners C, Kuehn A, Hentges F	Rev Fr Allergol 2014; 54(7):513-8	0,22
Lens	Vincent	Radiologie	Minimally invasive management of postoperative esophagojejunal anastomotic leak.	Facy O, Goergen M, Poulain V, Heieck F, Lens V, Azagra JS	Surg Laparosc Endosc Percutan Tech. 2014 Apr;24(2):183-6	
Lens	Vincent	Radiologie	Open wedge osteotomy of the tibial head. Management of vascular complications.	Gerich T, Lens V, Seil R, Pape D.	Orthopade. 2014 Nov;43(11):1008-15	0,66
Lens	Vincent	Radiologie	Primary aortic thrombosis: role of enhanced multislice CT demonstrated in three exceptional cases	Verbeeck N, Cavez N, Plawny L, Weber J, Lens V	JBR-BTR. 2014 Mar-Apr;97(2):76-80	
Maazoun	Yamen	Cardiologie	Percutaneous aortic valve replacement using the Direct Flow Medical system: results of the Luxembourg registry.	Maazoun Y, Wagner DR, Frambach P.	Bull Soc Sci Med Grand Duche Luxemb. 2014;(1):45-56	
Matgé	Guy	Neurochirurgie	NOAC and intracerebral bleeding--presentation of four cases and review of the literature.	Hana A, Berthold C, Gunness VR, Hana A, Doods G, Standhardt H, Koy J, Matgé G, Boecher-Schwarz H, Hertel F.	Bull Soc Sci Med Grand Duche Luxemb. 2014;(1):57-66	
Mathieu	Xavier	Chirurgie générale	Comparative Doppler flow measurements of the ulnar artery and of the postanastomotic radial artery in radiocephalic arteriovenous fistulas to detect steal syndromes	Verbeeck N, Pillet JC, Mocanu I, Mathieu X, Prospert F	JBR-BTR. 2014 Nov-Dec;97(6):331-5	
Metz	René	Neurologie	Stroke awareness in luxemburg: deficit concerning symptoms and risk factors.	Droste DW, Safo J, Metz RJ, Osada N.	Clin Med Insights Cardiol. 2014 Nov 10;8(Suppl 2):9-13	
Mocanu	Iulia	Radiologie	Acute renal failure due to bilateral ureteral stone: a rare occurrence	Mocanu I, Verbeeck N, Prospert F.	JBR-BTR. 2014 Sep-Oct;97(5):319-20	
Mocanu	Iulia	Radiologie	Comparative Doppler flow measurements of the ulnar artery and of the postanastomotic radial artery in radiocephalic arteriovenous fistulas to detect steal syndromes	Verbeeck N, Pillet JC, Mocanu I, Mathieu X, Prospert F	JBR-BTR. 2014 Nov-Dec;97(6):331-5	
Morel	Fanny	Immuno-Allergologie	Les facteurs de risque d'allergie alimentaire chez l'adulte.	Morisset M, Morel-Codreanu F, Hilger C, Lehners C, Kuehn A, Hentges F	Rev Fr Allergol 2014; 54(7):513-8	0,22
Morisset	Martine	Immuno-Allergologie	Asthma and smoking: a dangerous mix	Charpentier-Chaix C, Abou Hamdan A, Wirtz G, Morisset M, Schlessler M	Le Courrier des Addictions 2014 Jan; 1	
Morisset	Martine	Immuno-Allergologie	Identification and isolation of a Fel d 1-like molecule as a major rabbit allergen	Hilger C, Kler S, Arumugam K, Revets D, Muller CP, Charpentier C, Lehners C, Morisset M, Hentges F	J Allergy Clin Immunol. 2014 Mar;133(3):759-66	11,24
Morisset	Martine	Immuno-Allergologie	Les facteurs de risque d'allergie alimentaire chez l'adulte.	Morisset M, Morel-Codreanu F, Hilger C, Lehners C, Kuehn A, Hentges F	Rev Fr Allergol 2014; 54(7):513-8	0,22
Nati	Romain	Pneumologie	Bronchial airway gene expression in smokers with lung or head and neck cancer	Van Dyck E, Nazarov PV, Muller A, Nicot N, Bosseler M, Pierson S, Van Moer K, Palissot V, Mascaux C, Knolle U, Ninane V, Nati R, Bremnes RM, Vallar L, Berchem G, Schlessler M.	Cancer Med. 2014 Apr;3(2):322-36	
Nührenbörger	Christian	Médecine du Sport	Association of previous injury and speed with running style and stride-to-stride fluctuations	Mann R, Malisoux L, Nührenbörger C, Urhausen A, Meijer K, Theisen D	Scand J Med Sci Sports. 2014 Dec 30	3,17
Nührenbörger	Christian	Médecine du Sport	Moderate to severe injuries in football: a one-year prospective study of twenty-four female and male amateur teams.	Lion A, Theisen D, Windal T, Malisoux L, Nührenbörger C, Huberty R, Urhausen A, Seil R.	Bull Soc Sci Med Grand Duche Luxemb. 2014;(3):43-55.	
Pape	Dietrich	Orthopédie	2D and 3D MOCART scoring systems assessed by 9.4 T high-field MRI correlate with elementary and complex histological scoring systems in a translational model of osteochondral repair.	Goebel L, Zurakowski D, Müller A, Pape D, Cucchiari M, Madry H.	Osteoarthritis Cartilage. 2014 Oct;22(10):1386-95	4,66
Pape	Dietrich	Orthopédie	Fractures of the knee joint in the elderly: osteosynthesis versus joint replacement.	Pape D, Hoffmann A, Gerich T, Van der Kerkhofe M, Weber M, Pape HC.	Orthopade. 2014 Apr;43(4):365-73	0,66
Pape	Dietrich	Orthopédie	Iliopubic subcutaneous plate osteosynthesis for osteoporotic fractures of the anterior pelvic ring. An alternative to the supra-acetabular external fixator.	Gerich T, Bogdan A, Backes F, Gillman T, Seil R, Pape D.	Bull Soc Sci Med Grand Duche Luxemb. 2014;(1):7-14.	
Pape	Dietrich	Orthopédie	Iliopubic subcutaneous plate osteosynthesis for osteoporotic fractures of the anterior pelvic ring. An alternative to the supra-acetabular external fixator.	Gerich T, Bogdan A, Backes F, Gillman T, Seil R, Pape D	Bull Soc Sci Med Grand Duche Luxemb. 2014;(1):7-14	

Surname	Name	Service	Title	Authors	Publication /Reference	Impact Factor 2014
Pape	Dietrich	Orthopédie	Open wedge osteotomy of the tibial head. Management of vascular complications.	Gerich T, Lens V, Seil R, Pape D.	Orthopade. 2014 Nov;43(11):1008-15	0,66
Pape	Dietrich	Orthopédie	Osteoporotic periprosthetic fractures and fractures close to joints in the elderly: an interdisciplinary challenge.	Pape D, Pape HC.	Orthopade. 2014 Apr;43(4):297	0,66
Pape	Dietrich	Orthopédie	Osteotomy techniques close to the knee. Effect on wedge volume and bony contact surface.	Pape D, van Heerwaarden R, Haag M, Seil R, Madry H.	Orthopade. 2014 Nov;43(11):966-75	0,66
Pape	Dietrich	Orthopédie	Structural changes in the lateral tibiofemora compartment after high tibial osteotomy	Madry H, Ziegler R, Pape D, Cucchiari M.	Orthopade. 2014 Nov;43(11):957	0,66
Pape	Dietrich	Orthopédie	Radiostereometric analysis of early anatomical changes following medial opening wedge high tibial osteotomy. Knee	Teeter MG, Leitch KM, Pape D, Yuan X, Birmingham TB, Giffin JR.	Knee. 2014 Nov 8. [Epub ahead of print]	1,93
Pape	Dietrich	Orthopédie	Medial unicondylar knee replacement	Lorbach O, Pape D, Mosser P, Kohn D, Anagnostakos K	Orthopade. 2014 Oct;43(10):875-6, 878-82	0,66
Pape	Dietrich	Orthopédie	Effect of open wedge high tibial osteotomy on the lateral tibiofemoral compartment in sheep. Part II: standard and overcorrection do not cause articular cartilage degeneration.	Ziegler R, Goebel L, Cucchiari M, Pape D, Madry H.	Knee Surg Sports Traumatol Arthrosc. 2014;22(7):1666-77	2,83
Pape	Dietrich	Orthopédie	Effect of open wedge high tibial osteotomy on the lateral tibiofemoral compartment in sheep. Part III: analysis of the microstructure of the subchondral bone and correlations with the articular cartilage and meniscus.	Ziegler R, Goebel L, Seidel R, Cucchiari M, Pape D, Madry H	Knee Surg Sports Traumatol Arthrosc. 2014 Jun 14. [Epub ahead of print]	2,83
Pape	Dietrich	Orthopédie	Sense or nonsense of unloader braces	Lorbach O, Mosser P, Pape D	Orthopäde. 2014 Nov;43(11):984-7	0,66
Pape	Dietrich	Orthopédie	Small subchondral drill holes improve marrow stimulation of articular cartilage defects	Eldracher M, Orth P, Cucchiari M, Pape D, Madry H	Am J Sports Med. 2014 Nov;42(11):2741-50	4,69
Philippe	Paul	Chirurgie pédiatrique	Laparoscopic modified Orr-Loygue mesh rectopexy for rectal prolapse in children	Gomes-Ferreira C, Schneider A, Philippe P, Lacreuse I, Becmeur F	Jnl of Ped Surg. Aug 2014 [Epub ahead of print]	1,31
Philippe	Paul	Chirurgie pédiatrique	SFCP CO-18 - Prévalence de l'œsophage de Barrett dans l'atrésie de l'œsophage	Schneider A, Gottrand F, Bellaiche M, Becmeur F, Lachaux A, Michel JL, Dabadie A, Faure C, Philippe P et al.	Archives de Pédiatrie 2014;21(5):396	0,41
Philippe	Paul	Chirurgie pédiatrique	SFCP CO-78 - Vaginoplastie sigmoïdienne par coelioscopie : pour quelles patientes, quand et comment?	Kasbaoui SM, Schneider A, Gomes Ferreira c, Philippe P, Sapin E, Varlet F, Demarche M, Lacreuse I, Flaum V, Ranke A, Becmeur F	Archives de Pédiatrie 2014;21(5):456	0,41
Pillet	Jean Christophe	Chirurgie générale	Comparative Doppler flow measurements of the ulnar artery and of the postanastomotic radial artery in radiocephalic arteriovenous fistulas to detect steal syndromes	Verbeeck N, Pillet JC, Mocanu I, Mathieu X, Prospert F	JBR-BTR. 2014 Nov-Dec;97(6):331-5	
Pizon	Emmanuelle	Evaluation et Rééducation	Effects of pre-feeding oral stimulation on oral feeding in preterm infants: a randomized clinical trial.	Bache M, Pizon E, Jacobs J, Vaillant M, Lecomte A	Early Hum Dev. 2014 Mar;90(3):125-9	1,93
Plawny	Laurent	Hématologie-Cancérologie	Disruption of autophagy by the histone deacetylase inhibitor MGCD0103 and its therapeutic implication in B-cell chronic lymphocytic leukemia	El-Khoury V, Pierson S, Szwarcbart E, Brons NH2, Roland O, Cherrier-De Wilde S, Plawny L, Van Dyck E, Berchem G	Leukemia. 2014 Aug;28(8):1636-46	9,37
Plawny	Laurent	Hématologie-Cancérologie	Emerging new anticancer biological therapies in 2013 (haematological malignancies).	Plawny L, Ries F.	Curr Opin Oncol. 2014 May;26(3):363-70	3,76
Plawny	Laurent	Hématologie-Cancérologie	Primary aortic thrombosis: role of enhanced multislice CT demonstrated in three exceptional cases	Verbeeck N, Cavez N, Plawny L, Weber J, Lens V	JBR-BTR. 2014 Mar-Apr;97(2):76-80	
Poulain	Virginie	Chirurgie générale	Minimally invasive management of postoperative esophagojejunal anastomotic leak	Facy O, Goergen M, Poulain V, Heieck F, Lens V, Azagra JS	Surg Laparosc Endosc Percutan Tech. 2014 Apr;24(2):183-6	0,93
Prospert	Fernand	Néphrologie	Acute renal failure due to bilateral ureteral stone: a rare occurrence	Mocanu I, Verbeeck N, Prospert F.	JBR-BTR. 2014 Sep-Oct;97(5):319-20.	
Prospert	Fernand	Néphrologie	Comparative Doppler flow measurements of the ulnar artery and of the postanastomotic radial artery in radiocephalic arteriovenous fistulas to detect steal syndromes	Verbeeck N, Pillet JC, Mocanu I, Mathieu X, Prospert F	JBR-BTR. 2014 Nov-Dec;97(6):331-5	

Surname	Name	Service	Title	Authors	Publication /Reference	Impact Factor 2014
Pull	Charles	Psychiatrie	Personality disorders in Diagnostic and Statistical Manual of Mental Disorders-5: back to the past or back to the future?	Pull CB	Curr Opin Psychiatry. 2014 Jan;27(1):84-6	3,55
Pull	Charles	Psychiatrie	The downward spiral of mental disorders and educational attainment: a systematic review on early school leaving	Esch P, Bocquet V, Pull C, Couffignal S, Lehnert T, Graas M, Fond-Harmant L, Anseau M	BMC Psychiatry. 2014 Aug 27;14:237	2,23
Ries	Fernand	Hématologie-Cancérologie	Emerging new anticancer biological therapies in 2013 (haematological malignancies).	Plawny L, Ries F.	Curr Opin Oncol. 2014 May;26(3):363-70	3,76
Saleh	Christian	Neurologie	Improving the Consistency of Manual Deep Brain Structure Segmentations by Combining Variational Interpolation, Simultaneous Multi-Modality Visualisation and Histogram Equilisation	Bernard F, Gemmar P, Husch A, Saleh C, Neb H, Dooms G, Hertel F	Biomed Tech 2014; 59 (s1) © 2014 by Walter de Gruyter Boston. DOI 10.1515/bmt-2014-4254	1,23
Scalais	Emmanuel	Neurologie pédiatrique	Familial very long chain acyl-CoA dehydrogenase deficiency as a cause of neonatal sudden infant death: Improved survival by prompt diagnosis.	Scalais E, Bottu J, Wanders RJ, Ferdinandusse S, Waterham HR, De Meirleir L	Am J Med Genet A. 2015 Jan;167(1):211-4	2,04
Schlesser	Marc	Pneumologie	Asthma and smoking: a dangerous mix	Charpentier-Chaix C, Abou Hamdan A, Wirtz G, Morisset M, Schlesser M	Le Courrier des Addictions 2014 Jan; 1	
Schlesser	Marc	Pneumologie	Bronchial airway gene expression in smokers with lung or head and neck cancer	Van Dyck E, Nazarov PV, Muller A, Nicot N, Bosseler M, Pierson S, Van Moer K, Palissot V, Mascaux C, Knolle U, Ninane V, Nati R, Bremnes RM, Vallar L, Berchem G, Schlesser M.	Cancer Med. 2014 Apr;3(2):322-36	
Schlesser	Marc	Pneumologie	Efficacy and safety of coadministration of once-daily indacaterol and glycopyrronium versus indacaterol alone in COPD patients: the GLOW6 study	in Vincken W, Aumann J, Chen H, Henley M, McBryan D, Goyal P.	Int J Chron Obstruct Pulmon Dis. 2014 Feb 24;9:215-28	2,73
Schlesser	Marc	Pneumologie	The European initiative for quality management in lung cancer care	in Blum TG, Rich A, Baldwin D, Beckett P, De Ruyscher D, Faivre-Finn C, Gaga M, Gamarra F, Grigoriu B, Hansen NC, Hubbard R, Huber RM, Jakobsen E, Jovanovic D, Konsoulova A, Kollmeier J, Massard G, McPhelim J, Meert AP, Milroy R, Paesmans M, Peake M, Putora PM, Scherpereel A, Schönfeld N, Sitter H, Skaug K, Spiro S, Strand TE, Taright S, Thomas M, van Schil PE, Vansteenkiste JF, Wiewrodt R, Sculier JP	Eur Respir J. 2014 May;43(5):1254-77	7,12
Schlesser	Marc	Pneumologie	Usage of inhalation devices in asthma and chronic obstructive pulmonary disease: a Delphi consensus statement.	Ninane V, Brusselle GG, Louis R, Dupont L, Liistro G, De Backer W, Schlesser M, Vincken W	Expert Opin Drug Deliv. 2014 Mar;11(3):313-23	4,11
Schmit	Jean-Claude	Maladies Infectieuses	COMET: adaptive context-based modeling for ultrafast HIV-1 subtype identification	Struck D, Lawyer G, Ternes AM, Schmit JC, Bercoff DP	Nucleic Acids Res. 2014 Oct;42(18):e144	8,80
Schmit	Jean-Claude	Maladies Infectieuses	Global Dispersal Pattern of HIV Type 1 Subtype CRF01_AE: A Genetic Trace of Human Mobility Related to Heterosexual Sexual Activities Centralized in Southeast Asia.	Angelis K, Albert J, Mamais I, Magiorkinis G, Hatzakis A, Hamouda O, Struck D, Vercauteren J, Wensing AM, Alexiev I, Åsjö B, Balotta C, Camacho RJ, Coughlan S, Griskevicius A, Grossman Z, Horban A, Kostrikis LG, Lepej S, Liitsola K, Linka M, Nielsen C, Otelea D, Paredes R, Poljak M, Puchhammer-Stöckl E, Schmit JC, Sönnnerborg A, Staneková D, Stanojevic M, Boucher CA, Kaplan L, Vandamme AM, Paraskevis D.	J Infect Dis. 2014 Dec 15. pii: jiu666	5,77
Schmit	Jean-Claude	Maladies Infectieuses	Neutralising properties of peptides derived from CXCR4 extracellular loops towards CXCL12 binding and HIV-1 infection	Chevigné A, Fievez V, Szpakowska M, Fischer A, Counson M, Plesséria JM, Schmit JC, Deroo S	Biochim Biophys Acta. 2014 May;1843(5):1031-41	5,08
Schmit	Jean-Claude	Maladies Infectieuses	Patterns of transmitted HIV drug resistance in Europe vary by risk group	Frentz D, van de Vijver D, Abecasis A, Albert J, Hamouda O, Jørgensen L, Kücherer C, Struck D6, Schmit JC, Vercauteren J, Åsjö B, Balotta C, Bergin C, Beshkov D, Camacho R, Clotet B14, Griskevicius A, Grossman Z, Horban A, Kolupajeva T, Korn K, Kostrikis L, Linka KL, Nielsen C, Otelea D, Paraskevis D, Paredes R, Poljak M, Puchhammer-Stöckl E, Sönnnerborg A, Stanekova D, Stanojevic M, Vandamme AM, Boucher C, Wensing A; SPREAD Programme.	PLoS One. 2014 Apr 10;9(4):e94495	3,53
Schmit	Jean-Claude	Maladies Infectieuses	Structure prediction of GPCRs using piecewise homologs and application to the human CCR5 chemokine receptor: validation through agonist and antagonist docking	Arumugam K, Crouzy S, Chevigne A, Seguin-Devaux C, Schmit JC.	J Biomol Struct Dyn. 2014;32(8):1274-89	2,98
Schmit	Jean-Claude	Maladies Infectieuses	Factors associated with D-dimer levels in HIV-infected individuals	in Borges AH, O'Connor JL, Phillips AN, Baker JV, Vjecha MJ, Losso MH, Klinker H, Lopardo G, Williams I, Lundgren JD; INSIGHT SMART Study Group; ESPRIT Study Group; SILCAAT Scientific Committee.	PLoS One. 2014 Mar 13;9(3):e90978	3,53

Surname	Name	Service	Title	Authors	Publication /Reference	Impact Factor 2014
Schmit	Jean-Claude	Maladies Infectieuses	Increase in transmitted resistance to non-nucleoside reverse transcriptase inhibitors among newly diagnosed HIV-1 infections in Europe.	in Frenzt D, Van de Vijver DA, Abecasis AB, Albert J, Hamouda O, Jørgensen LB, Kücherer C, Struck D, Schmit JC, Vercauteren J, Åsjö B, Balotta C, Beshkov D, Camacho RJ, Clotet B, Coughlan S, Griskevicius A, Grossman Z, Horban A, Kolupajeva T, Korn K, Kostrikis LG, Liitsola K, Linka M, Nielsen C, Otelea D, Paraskevis D, Paredes R, Poljak M, Puchhammer-Stöckl E, Sönnnerborg A, Stanekova D, Stanojevic M, Van Wijngaerden E, Wensing AM, Boucher CA; SPREAD Programme.	BMC Infect Dis. 2014 Jul 21;14:407	2,56
Schmit	Jean-Claude	Maladies Infectieuses	Patterns of transmitted HIV drug resistance in Europe vary by risk group	in Frenzt D, van de Vijver D, Abecasis A, Albert J, Hamouda O, Jørgensen L, Kücherer C, Struck D, Schmit JC, Vercauteren J, Åsjö B, Balotta C, Bergin C, Beshkov D, Camacho R, Clotet B, Griskevicius A, Grossman Z, Horban A, Kolupajeva T, Korn K, Kostrikis L, Linka KL, Nielsen C, Otelea D, Paraskevis D, Paredes R, Poljak M, Puchhammer-Stöckl E, Sönnnerborg A, Stanekova D, Stanojevic M, Vandamme AM, Boucher C, Wensing A; SPREAD Programme	PLoS One. 2014 Apr 10;9(4):e94495	3,53
Schmit	Jean-Claude	Maladies Infectieuses	Severity of cardiovascular disease outcomes among patients with HIV is related to markers of inflammation and coagulation	in Nordell AD, McKenna M, Borges ÁH, Duprez D, Neuhaus J, Neaton JD; INSIGHT SMART, ESPRIT Study Groups; SILCAAT Scientific Committee	J Am Heart Assoc. 2014 May 28;3(3):e000844	2,88
Seil	Romain	Orthopédie	Combined anterior and rotational laxity measurements allow characterizing personal knee laxity profiles in healthy individuals.	Mouton C, Seil R, Meyer T, Agostinis H, Theisen D.	Knee Surg Sports Traumatol Arthrosc. 2014 Aug 26.	2,83
Seil	Romain	Orthopédie	Iliopubic subcutaneous plate osteosynthesis for osteoporotic fractures of the anterior pelvic ring. An alternative to the supra-acetabular external fixator.	Gerich T, Bogdan A, Backes F, Gillman T, Seil R, Pape D.	Bull Soc Sci Med Grand Duche Luxemb. 2014;(1):7-14	
Seil	Romain	Orthopédie	Influence of midsole hardness of standard cushioned shoes on running-related injury risk	Theisen D, Malisoux L, Genin J, Delattre N, Seil R, Urhausen A	Br J Sports Med. 2014 Mar;48(5):371-6	4,17
Seil	Romain	Orthopédie	Injuries in youth sports – epidemiology, risk factors and prevention	Theisen D, Malisoux L, Seil R, Urhausen A	Dtsch Z Sportmed 2014;65: 248-252	
Seil	Romain	Orthopédie	Kniegelenknahe Osteotomien. Neue Trends und neue Techniken.	Pape D, Seil R.	Orthopade. 2014 Nov;43(11):957	0,66
Seil	Romain	Orthopédie	Moderate to severe injuries in football: a one-year prospective study of twenty-four female and male amateur teams.	Lion A, Theisen D, Windal T, Malisoux L, Nührenbörger C, Huberty R, Urhausen A, Seil R.	Bull Soc Sci Med Grand Duche Luxemb. 2014;(3):43-55	
Seil	Romain	Orthopédie	Open wedge osteotomy of the tibial head. Management of vascular complications.	Gerich T, Lens V, Seil R, Pape D.	Orthopade. 2014 Nov;43(11):1008-15	0,66
Seil	Romain	Orthopédie	Osteotomy techniques close to the knee. Effect on wedge volume and bony contact surface.	Pape D, van Heerwaarden R, Haag M, Seil R, Madry H.	Orthopade. 2014 Nov;43(11):966-75	0,66
Seil	Romain	Orthopédie	Physical activity promotion for secondary prevention in patients with non-communicable diseases: the situation in the Grand-Duchy of Luxembourg.	Lion A, Urhausen A, Delagardelle C, Seil R, Theisen D	Bull Soc Sci Med Grand Duche Luxemb. 2014;(3):57-72	
Seil	Romain	Orthopédie	The difficult diagnosis of cartilaginous tibial eminence fractures in young children.	Chotel F, Seil R, Greiner P, Chaker MM, Berard J, Raux S.	Knee Surg Sports Traumatol Arthrosc. 2014;22(7):1511-6	2,83
Seil	Romain	Orthopédie	A close look at tibiofemoral rotation measurements	Theisen D, Mouton C, Seil R.	Knee Surg Sports Traumatol Arthrosc. 2014 Sep 6;Epub ahead of print	2,83
Seil	Romain	Orthopédie	Clinical and radiographic results of arthroscopic partial lateral meniscectomies in stable knees with a minimum follow up of 20 years.	Hulet C, Menetrey J, Beaufils P, Chambat P, Djian P, Hardy P, Potel JF, Servien E, Seil R; The French Arthroscopic Society (SFA).	Knee Surg Sports Traumatol Arthrosc. 2014 Sep 3. [Epub ahead of print]	2,83
Seil	Romain	Orthopédie	Hidden lesions of the posterior horn of the medial meniscus: a systematic arthroscopic exploration of the concealed portion of the knee.	Sonnery-Cottet B, Conteduca J, Thauinat M, Gunepin FX, Seil R.	Am J Sports Med. 2014 Apr;42(4):921-6	4,36
Seil	Romain	Orthopédie	Iliopubic subcutaneous plate osteosynthesis for osteoporotic fractures of the anterior pelvic ring. An alternative to the supra-acetabular external fixator.	Gerich T, Bogdan A, Backes F, Gillman T, Seil R, Pape D	Bull Soc Sci Med Grand Duche Luxemb. 2014;(1):7-14	
Seil	Romain	Orthopédie	Rotational profile alterations after anatomic posterolateral corner reconstructions in multiligament injured knees.	Tardy N, Mouton C, Boisrenoult P, Theisen D, Beaufils P, Seil R.	Knee Surg Sports Traumatol Arthrosc. 2014;22(9):2173-80	2,83
Sertznig	Claude	Anesthésie	Bispectral index to predict neurological outcome early after cardiac arrest	Stammet P, Collignon O, Werer C, Sertznig C, Devaux Y.	Resuscitation. 2014 Dec;85(12):1674-80	3,96

Surname	Name	Service	Title	Authors	Publication /Reference	Impact Factor 2014
Stammet	Pascal	Réanimation	Bispectral index to predict neurological outcome early after cardiac arrest.	Stammet P, Collignon O, Werer C, Sertznig C, Devaux Y.	Resuscitation. 2014 Dec;85(12):1674-80	3,96
Stammet	Pascal	Réanimation	Safety, feasibility, and outcomes of induced hypothermia therapy following in-hospital cardiac arrest-evaluation of a large prospective registry*.	Dankiewicz J, Schmidbauer S, Nielsen N, Kern KB, Mooney MR, Stammet P, Riker RR, Rubertsson S, Seder D, Smid O, Sunde K, Søreide E, Unger BT, Friberg H.	Crit Care Med. 2014 Dec;42(12):2537-45.	6,14
Stammet	Pascal	Réanimation	Interventions to reduce colonisation and transmission of antimicrobial-resistant bacteria in intensive care units: an interrupted time series study and cluster randomised trial.	Derde LP, Cooper BS, Goossens H, Malhotra-Kumar S, Willems RJ, Gniadkowski M, Hryniewicz W, Empel J, Dautzenberg MJ, Annane D, Aragão I, Chalfine A, Dumpis U, Esteves F, Giamarellou H, Muzlovic I, Nardi G, Petrikos GL, Tomic V, Martí AT, Stammet P, Brun-Buisson C, Bonten MJ; MOSAR WP3 Study Team	Lancet Infect Dis. 2014 Jan;14(1):31-9	19,44
Standhardt	Harald	Neurochirurgie	NOAC and intracerebral bleeding--presentation of four cases and review of the literature	Hana A, Berthold C, Gunness VR, Hana A, Doods G, Standhardt H, Koy J, Matgé G, Boecher-Schwarz H, Hertel F.	Bull Soc Sci Med Grand Duche Luxemb. 2014;(1):57-66	
Standhardt	Harald	Neurochirurgie	Radioinduced brain cyst: case report.	Doods G, Molitor P, Boulanger T, Hana A, Standhardt H, Hertel F, Lovblad KO	Bull Soc Sci Med Grand Duche Luxemb. 2014;(1):15-25	
Staub	Thérèse	Maladies Infectieuses	A survey of ATRIPLA use in clinical practice as first-line therapy in HIV-positive persons in Europe	in Mocroft A, Reiss P, Rakhmanova A, Banhegyi D, Phillips AN, De Wit S, Ristola M, Lundgren JD, Garup J, Kirk O; EuroSIDA in EuroCOORD.	Infection. 2014 Aug;42(4):757-62	2,86
Staub	Thérèse	Maladies Infectieuses	Deteriorating renal function and clinical outcomes in HIV-positive persons	in Mocroft A, Ryom L, Begovac J, Monforte AD, Vassilenko A, Gatell J, Florence E, Ormaasen V, Kirk O, Lundgren JD; EuroSIDA in EuroCOORD	AIDS. 2014 Mar 13;28(5):727-37	6,55
Staub	Thérèse	Maladies Infectieuses	Development of a definition for Rapid Progression (RP) of renal function in HIV-positive persons: the D:A:D study	in Kamara DA, Ryom L, Ross M, Kirk O, Reiss P, Morlat P, Moranne O, Fux CA, Mocroft A, Sabin C, Lundgren JD, Smith CJ; D:A:D study Group.	BMC Nephrol. 2014 Mar 25;15:51.	1,52
Staub	Thérèse	Maladies Infectieuses	Factors associated with D-dimer levels in HIV-infected individuals	in Borges AH, O'Connor JL, Phillips AN, Baker JV, Vjecha MJ, Losso MH, Klinker H, Lopardo G, Williams I, Lundgren JD; INSIGHT SMART Study Group; ESPRIT Study Group; SILCAAT Scientific Committee.	PLoS One. 2014 Mar 13;9(3):e90978	3,53
Staub	Thérèse	Maladies Infectieuses	Increase in transmitted resistance to non-nucleoside reverse transcriptase inhibitors among newly diagnosed HIV-1 infections in Europe.	in Frenzt D, Van de Vijver DA, Abecasis AB, Albert J, Hamouda O, Jørgensen LB, Kücherer C, Struck D, Schmit JC, Vercauteren J, Åsjö B, Balotta C, Beshkov D, Camacho RJ, Clotet B, Coughlan S, Griskevicius A, Grossman Z, Horban A, Kolupajeva T, Korn K, Kostrikis LG, Liitsola K, Linka M, Nielsen C, Otelea D, Paraskevis D, Paredes R, Poljak M, Puchhammer-Stöckl E, Sönnnerborg A, Stanekova D, Stanojevic M, Van Wijngaerden E, Wensing AM, Boucher CA; SPREAD Programme.	BMC Infect Dis. 2014 Jul 21;14:407	2,56
Staub	Thérèse	Maladies Infectieuses	Increased incidence of antiretroviral drug discontinuation among patients with viremic hepatitis C virus coinfection and high hyaluronic acid, a marker of liver fibrosis	Grint D, Peters L, Rockstroh JK, de Wit S, Mitsura VM, Knysz B, Pedersen C, Kirk O, Lundgren JD, Mocroft A; EuroSIDA in EuroCoord	AIDS. 2014 Feb 20;28(4):577-87	6,55
Staub	Thérèse	Maladies Infectieuses	Increased risk of cardiovascular disease (CVD) with age in HIV-positive men: a comparison of the D:A:D CVD risk equation and general population CVD risk equations	in Petoumenos K, Reiss P, Ryom L, Rickenbach M, Sabin CA, El-Sadr W, d'Arminio Monforte A, Phillips AN, De Wit S, Kirk O, Dabis F, Pradier C, Lundgren JD, Law MG; D:A:D study group.	HIV Med. 2014 Nov;15(10):595-603	3,45
Staub	Thérèse	Maladies Infectieuses	Letter to the editor: management of patients with Ebola virus disease in Europe: high-level isolation units should have a key role.	in Ippolito G, Puro V, Brouqui P, Lauria FN, Fusco FM; EuroNHID Consortium.	Euro Surveill. 2014 Dec 18;19(50):20993	4,65
Staub	Thérèse	Maladies Infectieuses	Patterns of transmitted HIV drug resistance in Europe vary by risk group	in Frenzt D, van de Vijver D, Abecasis A, Albert J, Hamouda O, Jørgensen L, Kücherer C, Struck D, Schmit JC, Vercauteren J, Åsjö B, Balotta C, Bergin C, Beshkov D, Camacho R, Clotet B, Griskevicius A, Grossman Z, Horban A, Kolupajeva T, Korn K, Kostrikis L, Linka KL, Nielsen C, Otelea D, Paraskevis D, Paredes R, Poljak M, Puchhammer-Stöckl E, Sönnnerborg A, Stanekova D, Stanojevic M, Vandamme AM, Boucher C, Wensing A; SPREAD Programme	PLoS One. 2014 Apr 10;9(4):e94495	3,53
Staub	Thérèse	Maladies Infectieuses	Prognostic value of vitamin D level for all-cause mortality, and association with inflammatory markers, in HIV-infected persons	in Shepherd L, Souberbielle JC, Bastard JP, Fellahi S, Capeau J, Reekie J, Reiss P, Blaxhult A, Bickel M, Leen C, Kirk O, Lundgren JD, Mocroft A, Viard JP; EuroSIDA in EuroCOORD.	J Infect Dis. 2014 Jul 15;210(2):234-43	5,77
Staub	Thérèse	Maladies Infectieuses	Severity of cardiovascular disease outcomes among patients with HIV is related to markers of inflammation and coagulation	in Nordell AD, McKenna M, Borges ÁH, Duprez D, Neuhaus J, Neaton JD; INSIGHT SMART, ESPRIT Study Groups; SILCAAT Scientific Committee	J Am Heart Assoc. 2014 May 28;3(3):e000844	2,88
Staub	Thérèse	Maladies Infectieuses	Thrombocytopenia is associated with an increased risk of cancer during treated HIV disease	in Borges ÁH, Lundgren JD, Ridolfo A, Katlama C, Antunes F, Grzeszczuk A, Blaxhult A, Mitsura VM, Doroana M, Battagay M, Gargalianos P, Mocroft A; EuroSIDA in EuroCOORD	AIDS. 2014 Nov 13;28(17):2565-71	6,55

Surname	Name	Service	Title	Authors	Publication /Reference	Impact Factor 2014
Staub	Thérèse	Maladies Infectieuses	Immuno-virological discordance and the risk of non-AIDS and AIDS events in a large observational cohort of HIV-patients in Europe	in Zoufaly A, Cozzi-Lepri A, Reekie J, Kirk O, Lundgren J, Reiss P, Jevtovic D, Machala L, Zangerle R, Mocroft A, Van Lunzen J; EuroSIDA in EuroCoord	PLoS One. 2014 Jan 31;9(1):e87160	3,53
Staub	Thérèse	Maladies Infectieuses	Trends in underlying causes of death in people with HIV from 1999 to 2011 (D:A:D): a multicohort collaboration	in Smith CJ, Ryom L, Weber R, Morlat P, Pradier C, Reiss P, Kowalska JD, de Wit S, Law M, el Sadr W, Kirk O, Friis-Moller N, Monforte Ad, Phillips AN, Sabin CA, Lundgren JD; D:A:D Study Group	Lancet. 2014 Jul 19;384(9939):241-8	39,20
Thomee	Caroline	Pédiatrie	Blau syndrome: cross-sectional data from a multicentre study of clinical, radiological and functional outcomes.	Rosé CD, Pans S, Casteels I, Anton J, Bader-Meunier B, Brissaud P, Cimaz R, Espada G, Fernandez-Martin J, Hachulla E, Harjacek M, Khubchandani R, Mackensen F, Merino R, Naranjo A, Oliveira-Knupp S, Pajot C, Russo R, Thomee C, Vastert S, Wulfraat N, Arostegui JI, Foley KP, Bertin J, Wouters CH.	Rheumatology (Oxford). 2014 Nov 20.	4,43
Thunenkotter	Thomas	Médecine du Sport	Ergometric performance and cardiovascular profile of obesity clinic patients	Giannakis G, Thünenkötter T, Weiler B, Urhausen A	Bull Soc Sci Med Grand Duche Luxemb. 2014;(3):7-24	
Urhausen	Axel	Médecine du Sport	A step towards understanding the mechanisms of running-related injuries	Malisoux L, Nielsen RO, Urhausen A, Theisen D	J Sci Med Sport. 2014 Aug 12. pii: S1440-2440(14)00140-6	3,07
Urhausen	Axel	Médecine du Sport	Association of previous injury and speed with running style and stride-to-stride fluctuations	Mann R, Malisoux L, Nührenbörger C, Urhausen A, Meijer K, Theisen D	Scand J Med Sci Sports. 2014 Dec 30	3,17
Urhausen	Axel	Médecine du Sport	Ergometric performance and cardiovascular profile of obesity clinic patients	Giannakis G , Thünenkötter T, Weiler B, Urhausen A	Bull Soc Sci Med Grand Duche Luxemb. 2014;(3):7-24	
Urhausen	Axel	Médecine du Sport	Influence of midsole hardness of standard cushioned shoes on running-related injury risk	Theisen D, Malisoux L, Genin J, Delattre N, Seil R, Urhausen A	Br J Sports Med. 2014 Mar;48(5):371-6	4,17
Urhausen	Axel	Médecine du Sport	Injuries in youth sports – epidemiology, risk factors and prevention	Theisen D, Malisoux L, Seil R, Urhausen A	Dtsch Z Sportmed 2014;65: 248-252	
Urhausen	Axel	Médecine du Sport	Moderate to severe injuries in football: a one-year prospective study of twenty-four female and male amateur teams.	Lion A, Theisen D, Windal T, Malisoux L, Nührenbörger C, Huberty R, Urhausen A, Seil R.	Bull Soc Sci Med Grand Duche Luxemb. 2014;(3):43-55	
Urhausen	Axel	Médecine du Sport	Physical activity promotion for secondary prevention in patients with non-communicable diseases: the situation in the Grand-Duchy of Luxembourg.	Lion A, Urhausen A, Delagardelle C, Seil R, Theisen D	Bull Soc Sci Med Grand Duche Luxemb. 2014;(3):57-72	
Urhausen	Axel	Médecine du Sport	Reliability and validity of pressure and temporal parameters recorded using a pressure-sensitive insole during running	Mann R, Malisoux L, Brunner R, Gette P, Urhausen A, Statham A, Meijer K, Theisen D	Gait Posture. 2014;39(1):455-9	2,29
Urhausen	Axel	Médecine du Sport	Zum Einfluss von Carboneinlegesohlen auf die seitendifferenten Pedalkräfte im Radsport	Fröhlich M, Koch M, Weiler B, Emrich E, Urhausen A	Sportorthop Sporttraumatol 2014; 30 : 366-370	
Verbeeck	Nicolas	Radiologie	Acute renal failure due to bilateral ureteral stone: a rare occurrence	Mocanu I, Verbeeck N, Prospert F.	JBR-BTR. 2014 Sep-Oct;97(5):319-20	
Verbeeck	Nicolas	Radiologie	Comparative Doppler flow measurements of the ulnar artery and of the postanastomotic radial artery in radiocephalic arteriovenous fistulas to detect steal syndromes	Verbeeck N, Pillet JC, Mocanu I, Mathieu X, Prospert F	JBR-BTR. 2014 Nov-Dec;97(6):331-5	
Verbeeck	Nicolas	Radiologie	Primary aortic thrombosis: role of enhanced multislice CT demonstrated in three exceptional cases	Verbeeck N, Cavez N, Plawny L, Weber J, Lens V	JBR-BTR. 2014 Mar-Apr;97(2):76-80	
Wagner	Daniel	Cardiologie	Adenosine stimulates angiogenesis by up-regulating production of thrombospondin-1 by macrophages	Ernens I, Bousquenaud M, Lenoir B, Devaux Y, Wagner DR	J Leukoc Biol. 2015 Jan;97(1):9-18	4,30
Wagner	Daniel	Cardiologie	Effects of adenosine on lymphangiogenesis	Lenoir B, Wagner DR, Blacher S, Sala-Newby GB, Newby AC, Noel A, Devaux Y	PLoS One. 2014 Mar 20;9(3):e92715	3,53
Wagner	Daniel	Cardiologie	Identification of Candidate Long Noncoding RNAs Associated with Left Ventricular Hypertrophy	Zhang L, Hamad EA, Vausort M, Funakoshi H, Feldman AM, Wagner DR, Devaux Y.	Clin Transl Sci. 2014 Nov 10	2,11
Wagner	Daniel	Cardiologie	Identification of candidate long non-coding RNAs in response to myocardial infarction	Zangrando J, Zhang L, Vausort M, Maskali F, Marie PY, Wagner DR, Devaux Y	BMC Genomics. 2014 Jun 10;15:460	4,04
Wagner	Daniel	Cardiologie	Long noncoding RNAs in patients with acute myocardial infarction	Vausort M, Wagner DR, Devaux Y	Circ Res. 2014 Sep 12;115(7):668-77	11,08

PUBLICATIONS

Surname	Name	Service	Title	Authors	Publication /Reference	Impact Factor 2014
Wagner	Daniel	Cardiologie	Percutaneous aortic valve replacement using the Direct Flow Medical system: results of the Luxembourg registry.	Maazoun Y, Wagner DR, Frambach P	Bull Soc Sci Med Grand Duche Luxemb. 2014;(1):45-56	
Wagner	Daniel	Cardiologie	Role of MicroRNAs in Endothelial Progenitor Cells: Implication for Cardiac Repair	Goretti E, Wagner DR, Devaux Y	J Stem Cells. 2014;9(2):107-15	
Wagner	Daniel	Cardiologie	Unity is strength - A panel of 4 microRNAs decreases cardiomyocyte hypertrophy	Goretti E, Zangrando J, Wagner DR, Devaux Y.	Int J Cardiol. 2014 Dec 24;182C:62-64.	6,17
Wallet-Faber	Nadège	Dermatologie	Dermatological side-effects in hepatitis C infected patients under a triple regimen associating pegylated interferon, ribavirin and telaprevir	Bernardeschi C, Valeyrie-Allanore L, Ortonne N, Gressier L, Wallet-Faber N, Bernard PH, Hezode C, Duclos-Vallée JC, Samuel D, Mallet V, Pol S, Milpied B, Dupin N.	J Eur Acad Dermatol Venereol. 2014 Sep 3. [Epub ahead of print]	3,11
Weber	Jos	Gastroentérologie	Primary aortic thrombosis: role of enhanced multislice CT demonstrated in three exceptional cases	Verbeeck N, Cavez N, Plawny L, Weber J, Lens V	JBR-BTR. 2014 Mar-Apr;97(2):76-80	
Weber-Lehners	Christiane	Immuno-Allergologie	Identification and isolation of a Fel d 1-like molecule as a major rabbit allergen.	Hilger C, Kler S, Arumugam K, Revets D, Muller CP, Charpentier C, Lehners C, Morisset M, Hentges F	J Allergy Clin Immunol. 2014 Mar;133(3):759-66	11,24
Werer	Christophe	Anesthésie	Bispectral index to predict neurological outcome early after cardiac arrest	Stammet P, Collignon O, Werer C, Sertznig C, Devaux Y.	Resuscitation. 2014 Dec;85(12):1674-80	3,96
Wirtz	Gil	Pneumologie	Asthma and smoking: a dangerous mix	Charpentier-Chaix C, Abou Hamdan A, Wirtz G, Morisset M, Schlessler M	Le Courrier des Addictions 2014 Jan; 1	

ACADEMIC TITLES

Name	Last name	Speciality	Academic Achievement	Official trainer from the University of Luxembourg	Official trainer of german Chamber of Physicians (Ärztammer)	Official trainer of medical student in Germany years 1 to 5	Official trainer of medical student 6th year	Official trainer of medical student from Belgium	Official trainer from Health Ministry Belgium	Academic positions	Research position
Atlan	Catherine	Endocrinology	PhD Nutrition, Mediteranean University , Aix-Marseille, 1999							Lecturer University of Mediterranée, Aix-Marseille,2000	
Azagra	Santiago	Surgery								Lecturer, University of Granada Honorary professor and lecturer, the mini-Invasive Surgical Institut of Caceres (J.Uson)	
Bauer	Guillaume	Policinical									
Berchem	Guy	Hemato - oncology	PhD, University Paris Sud (XI), 2014								Luxembourg Institute of Health (LIH), head of the Laboratory of Experimental Hemato-Oncology
Berglund	Sophie	Gynecology	PhD, Karolinska Institute Stockholm, 2010								
Beyenburg	Stefan	Neurology	Priv.-Doz. University Bonn, venia legendi Neurologie University Bonn 2001		Saarland Chamber of Physicians (Neurology - 6 years)	University Bonn					
Bindl	Lutz	Pediatrics	Priv.-Doz. University Bonn, venia legendi University Bonn, 2005		Saarland Chamber of Physicians (Pediatrics - 1 year)		Requested from Saarland University				
Biver	Armand	Pediatrics	DIU medicine and adolescent health (june 2015)								
Boecher-Schwarz	Hans	Neurosurgery	Priv.-Doz. et Venia legendi, University Mainz, 2001, dozent der University Wien, 2003								
Bottu	Jean	Pediatrics - neonatology						Catholic University Louvain University Liège			
Calteux	Nicolas	Plastic surgery						Catholic University Louvain		Lecturer and trainer at French College of Plastic Surgery	
Dadoun	Frédéric	Endocrinology	PhD, University Marseille, 1999							Lecturer University of Mediterranée, Aix-Marseille	
de Beaufort	Carine	Pediatric endocrinology	PhD, University Rotterdam, 1986							Guest professor at VUB Brussels	ResearchER at the Luxembourg Center for System in Biomedicin (LCSB)
De Bruyne	Filip	Gynecology					Saarland University			Academic consultant KUL 03/2014	

ACADEMIC TITLES

Name	Last name	Speciality	Academic Achievement	Official trainer from the University of Luxembourg	Official trainer of german Chamber of Physicians (Ärztchamber)	Official trainer of medical student in Germany years 1 to 5	Official trainer of medical student 6th year	Official trainer of medical student from Belgium	Official trainer from Health Ministry Belgium	Academic positions	Research position
Diederich	Nico	Neurology	Habilitation Neurology; venia legendi, University Köln		Saarland Chamber of Physicians (Neurology - 6 years)	University Köln		Catholic University Louvain		Invited Professor, Koln University Visiting Assistant Professor Rush University Med. Center, Chicago	Research at the Luxembourg Center for System in Biomedicin (LCSB)
Dooms	Georges	Medical Imaging	Priv.-Doz. University Geneva, 1994							Lecturer at the University of Geneva, pre-and post graduate, 1994	
Droste	Dirk	Neurology	2000 Habilitation Neurologie; venia legendi University Münster		Saarland Chamber of Physicians (Neurology - 6 years)		Saarland University			Invited professor, University Münster Seminar teacher of the German Society of Ultrasound in medicine	
Erpelding	Jeff R.	Cardiology									
Even	Annette	Policlinical									
Fogen	Frédéric	Palliative care			Saarland Chamber of Physicians (palliativ medicine - 12 months)						
Forges	Thierry	Assisted reproduction	PhD, University Nancy, 2004								
Gerich	Torsten	Traumatology				University Hannover				Invited professor, emergency medicine, Hochschule Hannover	
Goergen	Martine	Surgery					Saarland University				
Hermand	Jean-Paul	Gynecology								Lecturer at the Catholic University of Louvain and at the Free University of Brussels	
Hertel	Frank	Neurosurgery	Habilitation University Mainz		Saarland Chamber of Physicians (Neurosurgery-6 years)	University Mainz					
Kieffer	Isabelle	Pediatrics									
Krueger	Rejko	Neurology	Habilitation Neurology; venia legendi der University Tübingen							Professor at the University of Luxembourg Associate Professor and Head of the Laboratory for Functional Neurogenomics Hertie-Institute for Clinical Brain Research and German Center for Neurodegenerative Diseases, Tübingen	PEARL Chair and Head of Clinical and Experimental Neuroscience unit, at the Luxembourg Center for System Biomedicin
Le Saint	Laurent	Psychiatry								Lecturer in clinical sexology, University of Metz-Nancy	
Max	Martin	Neurosurgery	priv. Doz and venia legendi in intensive care medicine and anesthesiology, University of Homburg,		Saarland Chamber of Physicians (Anesthesia - 5 years) specialised in anesthesiology - intensive medicine	Saarland University					
Metz	René	Neurology			Saarland Chamber of Physicians (Neurology - 6 years)						

ACADEMIC TITLES

Name	Last name	Speciality	Academic Achievement	Official trainer from the University of Luxembourg	Official trainer of german Chamber of Physicians (Ärztchamber)	Official trainer of medical student in Germany years 1 to 5	Official trainer of medical student 6th year	Official trainer of medical student from Belgium	Official trainer from Health Ministry Belgium	Academic positions	Research position
Morisset	Martine	Immuno-allergology	PhD, University Nancy, 2008							Lecturer at the University of Metz-Nancy	
Mühe	Annette	Psychiatry			Saarland Chamber of Physicians (Psychiatrie 2 years)		Saarland University	Catholic University Louvain			
Nati	Romain	Pulmonology			Rheinland Pfalz Chamber of Physicians (Pulmonology - 2 years)						
Panosetti	Eugène	ORL								Lecturer at the University of Berne (CH) Invited Professor at the University of Liège	
Pape	Dietrich	Orthopedy	Priv.-Doz. University Saarland, 2013								Luxembourg Institute of Health (LIH), associated head of the Sport Medecine Research Laboratory.
Pauly	Fernand	Reeducation								Lecturer, University of Strasbourg	
Petit	Michel	Policlinical									
Philippe	Paul	Pediatrics - surgery								Lecturer at the University of Bologna in pediatric minimally invasive surgery. Instructor at the IRCAD EITS centre in Strasbourg and the IRCAD America centre in Barretos (Brasil)	
Pouthier	Dominique	Nephrology									
Ries	Fernand	Hemato-oncology						Catholic University Louvain			
Sanchez	Ana	Policlinical									
Schlesser	Marc	Pulmonology			Rheinland Pfalz Chamber of Physicians (Pulmonology - 2 years)						
Schmit	Jean-Claude	Immuno-allergology	PhD KUL, 1998								Luxembourg Institute of Health (LIH), director
Schmitz	Bernd	Anesthesia	Priv.-Doz. venia legendi University Erlangen-Nürnberg, 2001		Saarland Chamber of Physicians (Anesthesia - 5 years)		Saarland University				
Seil	Romain	Orthopedy			Saarland Chamber of Physicians (specialised Sport medicine)	Saarland University	Saarland University			Invited professor, Saarland University	Luxembourg Institute of Health (LIH), associated head of the Sport Medecine Research Laboratory.
Simon	Marc	Policlinical						Catholic University Louvain			
Stammet	Pascal	Reanimation	PhD Student, University Liège								

ACADEMIC TITLES

Name	Last name	Speciality	Academic Achievement	Official trainer from the University of Luxembourg	Official trainer of german Chamber of Physicians (Ärztchammer)		Official trainer of medical student in Germany years 1 to 5	Official trainer of medical student 6th year	Official trainer of medical student from Belgium	Official trainer from Health Ministry Belgium	Academic positions	Research position
Staub	Thérèse	Infectious diseases										
Urhausen	Axel	Sport medicine	Priv.-Doz. Saarland University, 1994,		Saarland Chamber of Physicians (specialised sport medicine)		University des Saarland University Potsdam				Invited professor, Saarland University	Luxembourg Institute of Health (LIH), associated head of the Sport Medicine Research Laboratory.
Van Wymersch	Didier	Gynecology							Catholic University Louvain			
Vervier	Jean-François	Pedopsychiatry									Lecturer at University Paris XIII	
Wagner	Daniel	Cardiology	PhD University Catholic Louvain, 1999									Luxembourg Institute of Health (LIH), head of the Laboratory of Cardiovascular Research
Weber	Joseph	Gastroenterology			Saarland Chamber of Physicians (Gastroenterology - 3 years)			Saarland University				
Witsch	Michael	Pediatric endocrinology			Baden-Württemberg Chamber of Physicians (specialised pediatric endocrinology)							

CHAPTERS IN BOOKS

Surname	Name	Service	Chapter	Authors	Book title	Editor	Reference / Page
Azagra	Juan	Surgery	Laparoscopic liver surgery	Ramia JM, de la Plaza R, Adel F, Goergen M, Garcia-Parreno J, Azagra JS	Laparoscopy, Procedures, Pain Management and Postoperatives Complications	Nova Medical N.Y.	
Boecher-Schwarz	Hans	Neurosurgery	Zerebrale Aneurysmabehandlung	Boecher-Schwarz H, Standhard H	Neurochirurgie	Schattauer Verlag	
Diederich	Nico	Neurology	Psychosis in Parkinson's disease	Goetz CG, Diederich NJ, Fénelon G	Chaudhuri KR, Tolosa E, Schapira A, Poewe W (eds). Non-motor symptoms in Parkinson's disease. 2nd edition	Oxford University Press 2014	pp 184-208
Diederich	Nico	Neurology	The pathology of hallucinations: one or several points of processing breakdown?	Diederich, NJ, Goetz CG, Stebbins GT	Collerton D, Mosimann UP, Perry E (Eds.): The Neuroscience of Visual Hallucinations	John Wiley & Sons, Inc., 2014	pp 281-306
Goergen	Martine	Surgery	Laparoscopic liver surgery	Ramia JM, de la Plaza R, Adel F, Goergen M, Garcia-Parreno J, Azagra JS	Laparoscopy, Procedures, Pain Management and Postoperatives Complications	Nova Medical N.Y.	
Hertel	Frank	Neurosurgery	Glioblastome	Hertel F, Kortmann RD	Onkologie aktuell; interdisziplinäre Empfehlungen 16. Auflage	Zuckschwerdt Verlag	
Hertel	Frank	Neurosurgery	Lymphome des ZNS	Hertel F, Dornoff W	Onkologie aktuell; interdisziplinäre Empfehlungen 16. Auflage	Zuckschwerdt Verlag	
Hoffmann	Alexander	Orthopedy	Bedeutung des Sports für die Entwicklung: Wachstum und Entwicklung des Kindes	Hoffmann A, Pape D, Dück K, Seil R	Sportorthopädie und -traumatologie im Kindes- und Jugendalter.	Deutscher Aerzte-Verlag, 2014	pp 1-13
Morisset	Martine	Immuno-Allergology	Anaphylaxis prevention	Morisset M	Ebook "Advances in anaphylaxis management	Future medicine Ltd, London	chap.8:109-123
Pape	Dietrich	Orthopedy	Radiologische Planung vor Osteotomien	Seil R, Nührenböcker C, Hoffmann A.	Lobenhoffer: Kniegelenknahe Osteotomien	Thieme Verlag, 2014	
Seil	Romain	Orthopedy	Klinische Untersuchungstechniken vor Osteotomien.	Seil R, Nührenböcker C, Hoffmann A.	Lobenhoffer: Kniegelenknahe Osteotomien	Thieme Verlag, 2014	
Seil	Romain	Orthopedy	Rehabilitation after osteotomies around the knee.	Takeuchi R, Martijn M, Van Heerwaarden R, Seil R	Lobenhoffer: Kniegelenknahe Osteotomien	Thieme Verlag, 2014	
Seil	Romain	Orthopedy	ACL rupture with open physes: Risk for growth plate and timing for surgery	Seil R.	Siebold R, Dejour D, Zaffagnini S. Arthroscopic Anterior Cruciate Ligament Reconstruction : A practical surgical guide.	Springer Verlag, Heidelberg, 2014	
Seil	Romain	Orthopedy	Réparations méniscales : nouvelles indications	Seil R, Hoffmann A, Pape D.	Hulet C, Potel JF : Techniques arthroscopiques, membre inférieur.	Collection des Cahiers d'Enseignement de la SOFCOT. Elsevier-Masson, Paris 2014	pp 131-146
Seil	Romain	Orthopedy	Ligamentoplastie du croisé antérieur chez l'enfant.	Chotel F, Raux S, Seil R.	Hulet C, Potel JF : Techniques arthroscopiques, membre inférieur.	Collection des Cahiers d'Enseignement de la SOFCOT. Elsevier-Masson, Paris 2014	pp 191-201
Seil	Romain	Orthopedy	Meniscal repair.	Seil R, Hoffmann A, Gerich T, Pape D.	EFORT Instructional Lecture Book, Vol. 14	Springer, Berlin, Heidelberg, New York, 2014	
Seil	Romain	Orthopedy	ACL injuries in children.	Seil R, Chotel F.	Karlsson, Doral (eds.) Sports Injuries: Prevention, Diagnosis, Treatment and Rehabilitation.	Springer, Berlin, Heidelberg, New York, 2014	
Standhardt	Harald	Neurosurgery	Zerebrale Aneurysmabehandlung	Boecher-Schwarz H, Standhard H	Neurochirurgie	Schattauer Verlag	

PRESENTATIONS AT CONGRESSES

Surname	Name	Service	Date		City	Title / Présentation
Allard	Serge	Pédiatrie	18.10.2014	Les jeunes et le sport : JUST MOVE	Luxembourg	Asthme et sport : Franchissons les barrières ensemble
Azagra	Juan S	Chirurgie	29.04.2014	Education & Research Day	Luxembourg	Impact of digital multimedia system communication (ORI) in surgical practice and education
Azagra	Juan S	Chirurgie	01-03.10.2014	116e Congrès Français de Chirurgie	Paris (F)	
Azzolin	Jose	Médecine physique	29-30.03.2014	Rhumatologie et Orthopédie, Alformec	Weiskirchen (D)	Prise en charge des lombalgies
Bache	Manon	Néonatalogie	16.05.2014	GEFERS	Luxembourg	Ethique de l'organisation, éthique du management
Beissel	Jean	Cardiologie	22.03.2014	Société Luxembourgeoise de Cardiologie	Luxembourg	To pace or not to pace
Beissel	Jean	Cardiologie	27.09.2014	World Heart Day Société Luxembourgeoise de Cardiologie	Luxembourg	Arrêt cardiaque
Beissel	Jean	Cardiologie	18.10.2014	Les jeunes et le sport : JUST MOVE	Luxembourg	Projet scolaire : Formation Réagis et installation défibrillateurs semi automatisé
Beissel	Jean	Cardiologie	20 - 23.05.2014	EuroPCR, Joint session Bosnia, Romania and Luxembourg	Paris (F)	How should I treat? (chairman and take home message)
Beissel	Jean	Cardiologie	30.08 - 03.09.2014	ESC Congress	Barcelona (Espagne)	Debates on cardiovascularimaging in patients with coronary artery disease (chairman abstract session)
Beissel	Jean	Cardiologie	30.08 - 03.09.2014	ESC Congress	Barcelona (Espagne)	Cardiopulmonary resuscitation : new insights (chairman abstract session)
Beissel	Jean	Cardiologie	30.08 - 03.09.2014	ESC Congress	Barcelona (Espagne)	Abstract reviewer
Berchem	Guy	Onco-Hémato	25-29.06.2014	16th World Congress on Gastrointestinal Cancer	Barcelona (Espagne)	Clinical case discussion
Berchem	Guy	Onco-Hémato	24.04.2014	Jury Prix Galien	Bruxelles (B)	
Berchem	Guy	Onco-Hémato	29.04.2014	Education & Research Day	Luxembourg	Granzyme B degradation by autophagy decreases tumor cell susceptibility to natural killer-mediated lysis under hypoxia
Berchem	Guy	Onco-Hémato	11.10.2015	Post-ESMO Meeting	Namur (B)	
Berchem	Guy	Onco-Hémato	03.04.2014	Chimiothérapie Glioblastome et Poumon	Nivelles (B)	
Berglund	Sophie	Gyn-Obstétrique	29.04.2014	Education & Research Day	Luxembourg	Chaque cas d'asphyxie est une occasion d'apprendre, études d'évitabilité de l'asphyxie sévère, expérience suédoise
Bernard	Florian	Neurochirurgie	11.2014	10. Jahrestagung Deu Ges für Neuromodulation	Bad Oeynshausen (D)	Poster : Modelling of Brainshift in Deep Brain Stimulation
Bernard	Florian	Neurochirurgie	11.2014	10. Jahrestagung Deu Ges für Neuromodulation	Bad Oeynshausen (D)	Poster : Postoperative imaging in Deep Brain Stimulation : a controversial issue
Bernard	Florian	Neurochirurgie	11.2014	10. Jahrestagung Deu Ges für Neuromodulation	Bad Oeynshausen (D)	Poster : Interactive hierarchical segmentation for deep brain structure identification
Berthold	Christophe	Neurochirurgie	11.2014	10. Jahrestagung Deu Ges für Neuromodulation	Bad Oeynshausen (D)	Poster : Pulsed high frequency stimulation or thermocoagulation in the treatment for trigeminal pain
Berthold	Christophe	Neurochirurgie		Biennal meeting of the American Soc for Ster and Functional Neurosurgery	Washington (USA)	Epidural pulsed radiofrequenvy (Eprf) for opain treatment-a retrospective study
Beyenburg	Stefan	Neurologie	14-17.05.2014	Jahrestagung Dt Gesellschaft für Epileptologie	Bonn (D)	Psychiatrische Ko-Morbidität bei Erwachsenen und Kindern/Jugendlichen mit Epilepsie
Beyenburg	Stefan	Neurologie	02-03.05.2014	Kleinwachauer Epilepsiesymposium	Dresden (D)	
Beyenburg	Stefan	Neurologie	01-03.10.2014	Tag der Epilepsie	Zürich (CH)	Die Darstellung der Epilepsie in den Medien
Bindl	Lutz	Néonatalogie	27-28.05.2014	Jahrestagung GNPI	Bonn (D)	Veranstaltungsvorsitz
Biver	Armand	Pédiatrie	21.11.2014	Belgian society of pediatric neurology	Liège (B)	Abstract : Shwachmann-Diamond Syndrome presenting as early ichthyosis and later hypoglycemia with dermal and epidermal lipid droplet deposition
Boecher-Schwarz	Hans	Neurochirurgie	03-06.06.2014	49th Annual Congress of the Canadian Neurological Sciences Federation	Banff (Canada)	Supratentorial tanycytic ependymoma

Surname	Name	Service	Date		City	Title / Présentation
Boecher-Schwarz	Hans	Neurochirurgie	09-10.10.2014	50. Jahrestagung der Oesterreichischen Gesellsch. Für Neurochirurgie	Wien (A)	Ungewöhnlicher Verlauf eines malignen Meningeoms
Boeker	Dagmar	Douleur		Biennal meeting of the American Soc for Ster and Functional Neurosurgery	Washington (USA)	Epidural pulsed radiofrequenvy (Eprf) for opain treatment-a retrospective study
Boisanté	Catherine	Douleur	16.05.2014	GEFERS	Luxembourg	Ethique de l'organisation, éthique du management
Bottu	Jean	Néonatalogie	02-05.07.2014	NLS formation ERC	Bordeaux (F)	Introduction et direction
Charpentier	Catherine	Pneumologie	23-25.10.2014	Congrès National de la Société Française de Tabacologie	Clermont-Ferrand (F)	Présidence session : sevrage et prises en charge intégrées
Charpentier	Catherine	Pneumologie	27.09.2014	World Heart Day Société Luxembourgeoise de Cardiologie	Luxembourg	E-cigarette : Qu'en penser en septembre 2014?
Dadoun	Frédéric	Endocrinologie	22.03.2015	Société Luxembourgeoise de Cardiologie	Luxembourg	Regards croisés et questions ouvertes
Dadoun	Frédéric	Endocrinologie	23.05.2014	Journée thématique autour de l'obésité	Luxembourg	L'aspect médical de l'obésité: risques et conséquences
D'Alimonte	Julia	Pédopsychiatrie	05.11.2014	8e Conférence nationale Santé	Luxembourg	coordinateur
de Beaufort	Carine	Pédiatrie	17-20.09.2014	Eurodiabète ESPF	Dublin (IRL)	
de Beaufort	Carine	Endocrinologie péd	29.04.2014	Education & Research Day	Luxembourg	Microbiome and type 1 diabetes
de Beaufort	Carine	Endocrinologie péd	18.10.2014	Les jeunes et le sport : JUST MOVE	Luxembourg	Diabète et sport : No slow motion
de Beaufort	Carine	Pédiatrie	01-06.09.2014		Toronto (Canada)	chair and secretary general
De La Fuente Garcia	Isabel	Pédiatrie	05.2015	ESPID	Dublin (IRL)	Protection against vaccine preventable diseases (VPD) after chemotherapy for Acute Lymphoblastic Leukemia (ALL)
De Nadai	Serge	Gériatrie	16.05.2015	GEFERS	Luxembourg	Ethique de l'organisation, éthique du management
Delagardelle	Charles	Cardiologie	28.04.2014	Sport-thérapie & maladies chroniques	Luxembourg	Apport thérapeutique du sport aux maladies cardiovasculaires et cancéreuses: mécanisme commun
Despontin	Karine	Pédiatrie	21.11.2014	Belgian society of pediatric neurology	Liège (B)	Abstract : Shwachmann-Diamond Syndrome presenting as early ichthyosis and later hypoglycemia with dermal and epidermal lipid droplet deposition
Diederich	Nico	Neurologie	01-04.10.2014	German Genetic Society, Parkinson Symposium	Luxembourg	chairperson + poster
Dooms	Georges	Radiologie	11.2014	10. Jahrestagung Deu Ges für Neuromodulation	Bad Oeynshausen (D)	Poster : DTI Fibretracking of the arcuate fascicle in Neuronavigation for Brain tumors
Dooms	Georges	Radiologie	11.2014	10. Jahrestagung Deu Ges für Neuromodulation	Bad Oeynshausen (D)	Poster : Postoperative imaging in Deep Brain Stimulation : a controversial issue
Dooms	Georges	Radiologie	03-06.06.2014	49th Annual Congress of the Canadian Neurological Sciences Federation	Banff (Canada)	Supratentorial tanycytic ependymoma
Droste	Dirk	Neurologie	12.03.2014	Südwestdeutscher Schlaganfalltag	Kaiserslautern (D)	Neue Diagnosemethoden beim Schlaganfall: Vorhofflimmern
Droste	Dirk	Neurologie		Conseil national des Femmes	Luxembourg	Les femmes et les hommes face à l'accident vasculaire cérébral
Droste	Dirk	Neurologie	27.09.2014	World Heart Day Société Luxembourgeoise de Cardiologie	Luxembourg	Den Hireschlag - En Noutfall
Droste	Dirk	Neurologie	31.05.2014	Update Schlaganfall	Luxembourg	Ernährung und Bewegung zur Prophylaxe zerebro-vaskulärer Erkrankungen (chairman)
Droste	Dirk	Neurologie	29.04.2014	Education & Research Day	Luxembourg	A daily glass of red wine associated with lifestyle changes independently improves blood lipids in patients with carotid arteriosclerosis: results from a radomized controlled trial
Duhem	Caroline	Onco-Hémato	22-29.05.2014	SIFEM 2014	Bruxelles (B)	
Duhem	Caroline	Onco-Hémato	28.04.2014	Sport-thérapie & maladies chroniques	Luxembourg	Sport et cancer: pourquoi, pour qui et comment?
Duhem	Caroline	Onco-Hémato	22.11.2014	Femmes et cancer	Luxembourg	Cancer du sein : quoi de neuf?
Duhem	Caroline	Onco-Hémato	11.10.2015	Post-ESMO Meeting	Namur (B)	
Duhem	Caroline	Onco-Hémato	13.06.2014	3e Congrès Français Cancer inzta..	Reims (F)	Moderation
Fogen	Frédéric	Soins palliatifs	12.11.2014	AEK Saarland	Tholey (D)	
Gerich	Torsten	Traumatologie	22.03.2014	Symposium Complication management in geriatric shoulder fractures	Luxembourg	chairman
Gerich	Torsten	Traumatologie	04-06.12.2016	Congrès annuel de la Société Française d'Arthroscopie	Luxembourg	Arthroscopic treatment of articular fractures of the lower limb

Surname	Name	Service	Date		City	Title / Présentation
Goergen	Martine	Chirurgie	30.04-03.05.2014	IFS EC 2014 (moderation et présentations)	Bruxelles (B)	What is perfect RNY Gastric Bypass? Technical Aspects : Defining length/size of gastric pouch and loops. Time reduced surgery by new devices.
Goergen	Martine	Chirurgie	23.05.2014	Journée thématique autour de l'obésité	Luxembourg	La chirurgie bariatrique – quand et pour qui?
Gomes Ferreira	Cindy	Chir Ped	22-26.07.2014	Congres I.P.E.G.	Edinburgh (Ecosse)	Laparoscopic Mesh Rectopexy for Rectal Prolapse
Gomes Ferreira	Cindy	Chir Ped	01-03.10.2014	4th ESPES Annual Congress	Bratislava (SK)	A Rare Case Of Traumatic Abdominal Wall Hernia Treated By Laparoscopy
Gomes Ferreira	Cindy	Chir Ped	24.03.2014	Journée Centre de Référence des Hernies Diaphragmatiques Congénitales	Paris (F)	Hernie diaphragmatique et thoracoscopique
Groben	Laurent	Cardiologie	22.03.2014	Société Luxembourgeoise de Cardiologie	Luxembourg	Pacing cardiaque et resynchronisation
Hana	Ardian	Neurochirurgie	11.2014	10. Jahrestagung Deu Ges für Neuromodulation	Bad Oeynshausen (D)	Poster : DTI Fibretracking of the arcuate fascicle in Neuronavigation for Brain tumors
Hana	Ardian	Neurochirurgie	03-06.06.2014	49th Annual Congress of the Canadian Neurological Sciences Federation	Banff (Canada)	Supratentorial tancytic ependymoma
Hana	Ardian	Neurochirurgie	26.02-01.03.2014		Paris (F)	présentation d'un E-poster
Hédo	Paul	Psychiatrie	05.11.2014	8e Conférence nationale Santé	Luxembourg	Dispositif de soins au GD de Luxembourg : ressources et défis.
Hellers	Joe	Chirurgie plastique	23.05.2014	Journée thématique autour de l'obésité	Luxembourg	La chirurgie plastique après Bypass/Sleeve
Hentges	François	Immuno-Allergologie	29.04.2014	Education & Research Day	Luxembourg	Identification and isolation of a FEL D1-like molecule as a major rabbit antigen
Hertel	Frank	Neurochirurgie		10th Asian Congress of Neurosurgery	Astana (Kasachstan)	Deep Brain Stimulation (DBS)-a personal series of 501 implantations
Hertel	Frank	Neurochirurgie		10th Asian Congress of Neurosurgery	Astana (Kasachstan)	Electromagnetic Navigation for brain and skullbase surgery
Hertel	Frank	Neurochirurgie	11.2014	10. Jahrestagung Deu Ges für Neuromodulation	Bad Oeynshausen (D)	Poster : DTI Fibretracking of the arcuate fascicle in Neuronavigation for Brain tumors
Hertel	Frank	Neurochirurgie	11.2014	10. Jahrestagung Deu Ges für Neuromodulation	Bad Oeynshausen (D)	Networks, Feedback and Deep Brain Stimulation-Insights in New Trends
Hertel	Frank	Neurochirurgie	11.2014	10. Jahrestagung Deu Ges für Neuromodulation	Bad Oeynshausen (D)	Poster : Modelling of Brainshift in Deep Brain Stimulation
Hertel	Frank	Neurochirurgie	11.2014	10. Jahrestagung Deu Ges für Neuromodulation	Bad Oeynshausen (D)	Poster : Postoperative imaging in Deep Brain Stimulation : a controversial issue
Hertel	Frank	Neurochirurgie	11.2014	10. Jahrestagung Deu Ges für Neuromodulation	Bad Oeynshausen (D)	Poster : Pulsed high frequency stimulation or thermocoagulation in the treatment for trigeminal pain
Hertel	Frank	Neurochirurgie	11.2014	10. Jahrestagung Deu Ges für Neuromodulation	Bad Oeynshausen (D)	Poster : Interactive hierarchical segmentation for deep brain structure identification
Hertel	Frank	Neurochirurgie	03-06.06.2014	49th Annual Congress of the Canadian Neurological Sciences Federation	Banff (Canada)	Supratentorial tancytic ependymoma
Hertel	Frank	Neurochirurgie		Congresso Soc Ster Neurochir Fonct de Brazil	Sao Paulo (Brazil)	Microrecording (MER) in Deep Brain Stimulation (DBS) and stereotactic lesioning (SL)
Hertel	Frank	Neurochirurgie		Biennal meeting of the American Soc for Ster and Functional Neurosurgery	Washington (USA)	Epidural pulsed radiofrequenvy (Eprf) for opain treatment-a retrospective study
Hertel	Frank	Neurochirurgie	29-30.03.2014	Rhumatologie et Orthopédie, Alformec	Weiskirchen (D)	Prise en charge des lombalgies
Hertel	Frank	Neurochirurgie		2nd meeting of the International Soc for miniinvasive Neurosurgery	Xi'an (China)	3D-susceptibility-weighted MRI for target and trajectory planning in DBS-surgery- (Is Gadolinium still necessary?)
Hertz	Pierre	Cellule DIM	20-21.11.2014	Séminaire ENCC 2014	Saint Malo (F)	Utilisation des données de la documentation soignante pour l'évaluation de la charge en soins et le pilotage des ressources soignantes au CHL et comparaison avec le PMSI français au travers de l'ENCC
Hsie	Julien	ORL	29.04.2014	Education & Research Day	Luxembourg	Smell and Taste Clinic
Husch	Andreas	Neurochirurgie	11.2014	10. Jahrestagung Deu Ges für Neuromodulation	Bad Oeynshausen (D)	Poster : DTI Fibretracking of the arcuate fascicle in Neuronavigation for Brain tumors
Husch	Andreas	Neurochirurgie	11.2014	10. Jahrestagung Deu Ges für Neuromodulation	Bad Oeynshausen (D)	Poster : Modelling of Brainshift in Deep Brain Stimulation

Surname	Name	Service	Date		City	Title / Présentation
Husch	Andreas	Neurochirurgie	11.2014	10. Jahrestagung Deu Ges für Neuromodulation	Bad Oeynshausen (D)	Poster : Postoperative imaging in Deep Brain Stimulation : a controversial issue
Husch	Andreas	Neurochirurgie	11.2014	10. Jahrestagung Deu Ges für Neuromodulation	Bad Oeynshausen (D)	Poster : Interactive hierarchical segmentation for deep brain structure identification
Kerschen	Philippe	Neurologie	28.01.2014	Staff Médecine Intene, CHU Pitié-Salpêtrière	Paris (F)	Encéphalites auto-immunes
Koy	Jan	Neurochirurgie		Biennal meeting of the American Soc for Ster and Functional Neurosurgery	Washington (USA)	Epidural pulsed radiofrequency (Eprf) for pain treatment-a retrospective study
Kreins	Nathalie	Pédiatrie	20-21.03.2014	Congrès Société Belge de Pédiatrie	Brugge (B)	
Krüger	Rejko	Neurologie	17-19.09.2014		München (D)	Mouvement anormaux
Krüger	Rejko	Neurologie	10-13.09.2014		Vancouver (CDN)	Maladie de Parkinson
Le Saint	Laurent	Psychiatrie	09.2014	XXX congrès de la Société de Psychogériatrie, SPLF	Besançon (F)	Le suicide de la personne âgée au GD de Luxembourg : épidémiologie et psychopathologies
Le Saint	Laurent	Psychiatrie	05.11.2014	8e Conférence nationale Santé	Luxembourg	Le suicide de la personne âgée au GD de Luxembourg : épidémiologie et facteurs de risque
Le Saint	Laurent	Psychiatrie	26-27.02.2014	VIII Journées nationales de Prévention du Suicide	Luxembourg	L'impact traumatique du suicide sur les proches
Lebrun	Frédéric	Cardiologie	18.10.2014	L'hypertension artérielle pulmonaire (HTAP)	Luxembourg	Echographie cardiaque et HTAP? Critères pronostics échographiques de l'HTAP et place du dépistage échographique de l'HTAP
Leches	Marguerite	Eval & Reed	26-29.06.14	Die Zukunft der Neurorehabilitation	Bad Aibling (D)	Was kommt nach der Reha? Das luxemburgische Modell
Maazoun	Yamen	Cardiologie	10-12.04.2014	4èmes Journées Nationales du GACI 2014	Paris (F)	L'angioplastie complexe : un conflit de génération ?
Max	Martin	Neurochirurgie	18-20.02.2014	24. Symposium Intensivmedizin (Leitung)	Bremen (D)	Die drei wichtigsten Studien über Komplikationen in der Intensivmedizin. Grundlagen der Lagerungstherapie.
Max	Martin	Neurochirurgie	16-17.01.2014	HIFIT 2014 (Moderation)	Heidelberg (D)	Spezielle Pathophysiologie der Beatmung
Max	Martin	Neurochirurgie	01-03.05.2014	5th annual meeting of NWAC	Wien (A)	ALI-The Expert's Concept of Ventilation
Metz	René	Neurologie	24.10.2014	World Palliative Care Day 2014, Palliative Care and Neurology	Luxembourg	Etat des lieux: coma, état végétatif chronique, état pauci-relationnel
Morisset	Martine	Immuno-Allergologie	16-18.04.2014	Congrès francophone d'Allergologie	Paris (F)	Animation atelier, présentation orale, chairman
Mühe	Annette	Psychiatrie	14-18.06.2014	World Association of Mental Health	Edinburgh (Ecosse)	Relational Mother-Baby Care in a general Public Hospital : Centre Hospitalier de Luxembourg (poster)
Najfeld	Michael	Orthopédie	14-17.05.2014	ESSKA Kongress	Amsterdam (NL)	
Nührenbörger	Christian	Orthopédie	04-06.12.2016	Congrès annuel de la Société Française d'Arthroscopie	Luxembourg	Results for anterior cruciate ligament reconstructions: which objectives should be reached?
Nührenbörger	Christian	Orthopédie	04-06.12.2016	Congrès annuel de la Société Française d'Arthroscopie	Luxembourg	Clinical and scientific perspective for the future of sports medicine in Luxembourg
Panosetti	Eugène	ORL	29.03.2014	Congrès Saar-Lor-Lus	Homburg (D)	
Panosetti	Eugène	ORL	03.04.2014	Congrès annuel de l'AFOP	Toulouse (F)	
Pape	Dietrich	Orthopédie	23.01.2014		Homburg (D)	Sportorthopädie "Obere Extremität"
Pape	Dietrich	Orthopédie	04-06.12.2014	Congrès annuel de la Société Française d'Arthroscopie	Luxembourg	The preclinical sheep model of high tibial osteotomy
Pape	Dietrich	Orthopédie	04-06.12.2016	Congrès annuel de la Société Française d'Arthroscopie	Luxembourg	Osteotomy and knee arthroscopy
Pape	Dietrich	Orthopédie	04-06.12.2016	Congrès annuel de la Société Française d'Arthroscopie	Luxembourg	Results for anterior cruciate ligament reconstructions: which objectives should be reached?
Pape	Dietrich	Orthopédie	04-06.12.2016	Congrès annuel de la Société Française d'Arthroscopie	Luxembourg	Ankle OCD of the children
Pape	Dietrich	Orthopédie	29.04.2014	Education & Research Day	Luxembourg	Postarthroscopic osteonecrosis of the knee - fact or fiction?
Pauly	Fernand	Eval & Reed	23.09.2014	Réunion RSL	Gilly (B)	
Pauly	Fernand	Eval & Rééducation	24.04.2014	Les enjeux éthiques de la médecine prénatale	Luxembourg	Un regard postnatal sur la médecine prénatale
Philippe	Paul	Chir Ped	02-05.03.2014	Masterchirurgie miniinvasive	Bologna (I)	
Philippe	Paul	Chir Ped	01-03.10.2014	4th ESPES Annual Congress	Bratislava (SK)	Congenital Mid-Ureteral Stenosis And Its Laparoscopic Treatment
Philippe	Paul	Chir Ped	22-27.07.2014	Congres I.P.E.G.	Edinburgh (Ecosse)	Three-D Reconstruction Aided Thoracoscopic Multisegmentectomy as a Lung Sparing Procedure in a Case of Multilobar Pulmonary CCAM (poster)

Surname	Name	Service	Date		City	Title / Présentation
Pignoloni	Claudio	Pédopsychiatrie	22-24.1.2014	12e Congrès de l'Encéphale	Paris (F)	Modération : Le travail avec les familles
Pull	Charles	Psychiatrie	23.05.2014	Journée thématique autour de l'obésité	Luxembourg	Bilan psychiatrique dans l'obésité: à quoi ça sert?
Pull	Charles	Psychiatrie	10.05.2014	83 journée d'atelier en Médecine générale	Mondorf-les-Bains	Angoisse
Ries	Fernand	Onco-Hémato	22.11.2014	Femmes et cancer	Luxembourg	Sport et Cancer
Saleh	Christian	Neurologie	11.2014	10. Jahrestagung Deu Ges für Neuromodulation	Bad Oeynshausen (D)	Poster : Postoperative imaging in Deep Brain Stimulation : a controversial issue
Saleh	Christian	Neurologie	11.2014	10. Jahrestagung Deu Ges für Neuromodulation	Bad Oeynshausen (D)	Poster : Interactive hierarchical segmentation for deep brain structure identification
Scalais	Emmanuel	Neuropédiatrie	21.11.2014	Belgian society of pediatric neurology	Liège (B)	Abstract : Shwachmann-Diamond Syndrome presenting as early ichthyosis and later hypoglycemia with dermal and epidermal lipid droplet deposition
Schlesser	Marc	Pneumologie		European Respiratory Society	Göteborg (Suède)	PROOF-registry: a prospective observational registry to describe the disease course and outcomes of idiopathic pulmonary fibrosis patients in a real-world clinical setting
Schlesser	Marc	Pneumologie	06-10.09.14	Annual European Congress of Pulmonology ERS	München (D)	PROOF-registry: a prospective observational registry to describe the disease course and outcomes of idiopathic pulmonary fibrosis patients in a real-world clinical setting
Schlesser	Marc	Pneumologie	07.11.2014	8e Congrès de la Société française de tabacologie	Paris (F)	Progrès dans la connaissance des modifications génétiques induites par le tabac
Schlesser	Marc	Pneumologie	16-21.05.2014	American Thoracic Society	San Diego (USA)	PROOF-registry: a prospective observational registry to describe the disease course and outcomes of idiopathic pulmonary fibrosis patients in a real-world clinical setting
Schmitz	Bernd	Anesthésie	06-08.02.2014	MIT-A&I 2014	Erlangen (D)	Medizinische Innovationen und Technik in Anästhesiologie und Intensivmedizin
Schmitz	Bernd	Anesthésie	07-11.05.2014	Dtscher Anästhesiekongress	Leipzig (D)	Qualität durch Wissenschaft
Seifert	Kerstin	Cardiologie	18.10.2014	Les jeunes et le sport : JUST MOVE	Luxembourg	Cardiopathies congénitales et sport : Quelles sont les limites ?
Seil	Romain	Orthopédie	04-06.12.2014	Congrès annuel de la Société Française d'Arthroscopie	Luxembourg	Large animal models for pediatric ACL reconstruction
Seil	Romain	Orthopédie	04-06.12.2014	Congrès annuel de la Société Française d'Arthroscopie	Luxembourg	Conception of a three-dimensional kinematics model of the knee joint, based on rigid body method, constitutive laws of ligaments and validation with cadaveric kinematics study with navigation system; and application to the analysis of ligament ruptures (free paper)
Seil	Romain	Orthopédie	04-06.12.2016	Congrès annuel de la Société Française d'Arthroscopie	Luxembourg	Changes in onset times of muscular activity during a side hop task (free paper)
Seil	Romain	Orthopédie	04-06.12.2016	Congrès annuel de la Société Française d'Arthroscopie	Luxembourg	Pediatric ACL injuries: what have we learned over the last decade?
Seil	Romain	Orthopédie	04-06.12.2016	Congrès annuel de la Société Française d'Arthroscopie	Luxembourg	Symposium on meniscal repair
Seil	Romain	Orthopédie	02.2014	5 th course for advanced surgery of the knee	Val d'Isère (F)	Meniscal tears in children and young athletes
Seil	Romain	Orthopédie	02.2014	5 th course for advanced surgery of the knee	Val d'Isère (F)	Management of ACL injuries in the skeletally immature patient
Seil	Romain	Orthopédie	02.2014	5 th course for advanced surgery of the knee	Val d'Isère (F)	Osteochondritis dissecans. Definition, etiology, epidemiology
Seil	Romain	Orthopédie	02.2014	5 th course for advanced surgery of the knee	Val d'Isère (F)	Associated neurolysis in total knee arthroplasty
Seil	Romain	Orthopédie	02.2014	5 th course for advanced surgery of the knee	Val d'Isère (F)	Gap balancing in TKA: dealing with the sagittal plane (recurvatum, flexion contracture, patellar height).
Seil	Romain	Orthopédie	02.2014	5 th course for advanced surgery of the knee	Val d'Isère (F)	after previous surgery: Skin incisions - approaches
Seil	Romain	Orthopédie	04-06.12.2016	Congrès annuel de la Société Française d'Arthroscopie	Luxembourg	Results for anterior cruciate ligament reconstructions: which objectives should be reached?
Seil	Romain	Orthopédie	03.2014	8e journée de chirurgie du genou du SEG	Bruxelles (B)	Actualités sur les réparations méniscales
Seil	Romain	Orthopédie	03.2014	8e journée de chirurgie du genou du SEG	Bruxelles (B)	Les lésions méniscosynoviales postérieures

Surname	Name	Service	Date		City	Title / Présentation
Seil	Romain	Orthopédie	03.2014	8e journée de chirurgie du genou du SEG	Bruxelles (B)	Le ménisque pédiatrique
Seil	Romain	Orthopédie	03.2014	International conference on football medicine	Milano (I)	Patellofemoral pathology in adolescent football players
Seil	Romain	Orthopédie	03.2014	7. Osnabrücker Symposium Orthopädie - Unfallchirurgie	Osnabrück (D)	Nachbehandlung nach VKB Rupturen
Seil	Romain	Orthopédie	03.2014	2 nd combined Annual congress of the Spanish Association for Surgery of the Knee and Arthroscopy	Sevilla (E)	ESSKA multiligament knee injury symposium: Complications and Outcomes
Seil	Romain	Orthopédie	05.2014	16 th ESSKA congress	Amsterdam (NL)	Complication potential in pediatric ACL patients
Seil	Romain	Orthopédie	05.2014	16 th ESSKA congress	Amsterdam (NL)	Return to Sports after Meniscus Surgery
Seil	Romain	Orthopédie	05.2014	16 th ESSKA congress	Amsterdam (NL)	New ways to evaluate static rotational knee laxity
Seil	Romain	Orthopédie	05.2014	Japan Orthopaedic Association	Kobe (JP)	Management of pediatric ACL injuries
Seil	Romain	Orthopédie	06.2014	4. Berliner Expertenmeeting Sportmedizin	Berlin (D)	Das kindliche Kreuzband im Sport
Seil	Romain	Orthopédie	06.2014	15 th EFORT congress	London (UK)	ESSKA Symposium: Advanced meniscal repair
Seil	Romain	Orthopédie	06.2014	15 th EFORT congress	London (UK)	Instructional course lecture: Meniscal repair
Seil	Romain	Orthopédie	07.2014	Vail International Complex Knee Symposium	Vail (Co, USA)	Preserve the meniscus at all costs: advanced indications for repair
Seil	Romain	Orthopédie	07.2014	Vail International Complex Knee Symposium	Vail (Co, USA)	Osteotomies for Chronic Multiple Ligament Injuries
Seil	Romain	Orthopédie	07.2014	Vail International Complex Knee Symposium	Vail (Co, USA)	Trochleoplasty for trochlear dysplasia
Seil	Romain	Orthopédie	07.2014	Vail International Complex Knee Symposium	Vail (Co, USA)	Live Surgery: complex meniscal repair
Seil	Romain	Orthopédie	07.2014	Vail International Complex Knee Symposium	Vail (Co, USA)	Live Surgery: Use of fluoroscopy for cruciate/collateral/MPFL Diagnosis and Anatomic Placement
Seil	Romain	Orthopédie	08.2014	Frankfurter Spätsommersymposium, Berufsgenossenschaftliche Unfallklinik	Berlin (D)	Meniskus und Kreuzband - primärer und sekundärer Stabilisator: wer hilft wem aus biomechanischer Sicht?
Seil	Romain	Orthopédie	09.2014	50 th anniversary congress orthopaedic university clinic Base	Basel (CH)	Improving quality of life and performance: Present and future of orthopaedic sports medicine. Orthopaedics: today and future
Seil	Romain	Orthopédie	09.2014	5. Arthromedicum	Chiemsee (D)	Die kindliche Kreuzbandverletzung
Seil	Romain	Orthopédie	09.2014	Annual meeting of the german-speaking arthroscopy society	Innsbruck (A)	International session ACL+...: Pediatric ACL injuries
Seil	Romain	Orthopédie	10.2014	Annual congress of the Portuguese orthopaedic association (SPOT)	Albufeira (P)	Pediatric ACL injuries
Seil	Romain	Orthopédie	11.2014	Osteotomy-a masterclass programme	Basingstoke (UK)	High tibial osteotomy versus unicondylar knee arthroplasties
Seil	Romain	Orthopédie	11.2014	Osteotomy-a masterclass programme	Basingstoke (UK)	Rehabilitation: what can a patient expect to do following an osteotomy ?
Seil	Romain	Orthopédie	11.2014	Alwin -Jäger-Kurs	München (D)	Meniskusverletzungen: von der Resektion zur Transplantation
Seil	Romain	Orthopédie	11.2014	International congress for translation in regenerative medicine: knee joint regeneration	Regensburg (D)	Cartilage regeneration in patients with open physes
Seil	Romain	Orthopédie	02.2014	12. Arthroskopie - und Diagnostikkurs	Wolkenstein (I)	Osteotomien am Kniegelenk - eine Standortbestimmung
Seil	Romain	Orthopédie	04-06.12.2016	Congrès annuel de la Société Française d'Arthroscopie	Luxembourg	Individualised knee laxity profiles: combined measurements of anterior and rotational laxity measurements.
Sertznig	Claude	Soins Intensifs	07-10.09.2014	5th International Hypothermia Symposium	Edinburgh (Ecosse)	Poster : Bispectral index as early predictor of neurological outcome after cardiac arrest
Sow	Rouguiatou	Cardiologie	18.10.2014	L'hypertension artérielle pulmonaire (HTAP)	Luxembourg	Cardiopathies associées à des shunts, bilan et conduite à tenir?

Surname	Name	Service	Date		City	Title / Présentation
Stammet	Pascal	Soins Intensifs	07-10.09.2014	5th International Hypothermia Symposium	Edinburgh (Ecosse)	Poster : Bispectral index as early predictor of neurological outcome after cardiac arrest
Stammet	Pascal	Soins Intensifs	10.12.2014	2nd personalized medicine consortium meeting LCSB	Esch/Alzette	Long non coding RNAs to predict outcome after cardiac arrest
Stammet	Pascal	Soins Intensifs	29.04.2014	Education & Research Day	Luxembourg	Targeted temperature management at 33C° vs 36C° after cardiac arrest
Standhardt	Harald	Neurochirurgie	09-10.10.2014	50. Jahrestagung der Oesterreichischen Gesellsch. Für Neurochirurgie	Wien (A)	Ungewöhnlicher Verlauf eines malignen Meningeoms
Staub	Thérèse	Maladies Infectieuses	23-24.10.2015	First European conference on Hepatitis Cand drug use	Berlin (D)	High recurrence rate of hepatitis C infection after treatment in prison in inmates in Luxembourg
Stein	Romain	Médecine pénitentiaire	02-06.07.2014	Congrès WONCA Europe (abstract)	Lisbonne (P)	Flexibility in General Practice, definition and concepts
Stein	Romain	Médecine pénitentiaire	19.11.2014	Semaine médicale de Lorraine	Nancy (F)	Optimiser la prise en charge de l'insuffisant cardiaque à domicile
Thünenkötter	Thomas	Médecine du Sport	23.05.2014	Journée thématique autour de l'obésité	Luxembourg	Die Bedeutung der körperlichen Aktivität und der Ernährung zur Vorbeuge und Behandlung des Übergewichts
Urhausen	Axel	Médecine du Sport	09.05.2014	Europrevent Congress	Amsterdam (NL)	The heart-lung interaction in preventive cardiology (moderation)
Urhausen	Axel	Médecine du Sport	13.12.2014	Jahreskongress der Deutschen Gesellsch. Für Sportmedizin und Prävention	Frankfurt (D)	Gesundheit im Leistungssport aus internistischer Sicht.
Urhausen	Axel	Médecine du Sport	02.07.2014	World Congress of Cycling Science	Leeds (GB)	Exercice physiology session (moderation)
Urhausen	Axel	Médecine du Sport	04-06.12.2016	Congrès annuel de la Société Française d'Arthroscopie	Luxembourg	Clinical and scientific perspective for the future of sports medicine in Luxembourg
Urhausen	Axel	Médecine du Sport	18.10.2014	Les jeunes et le sport : JUST MOVE	Luxembourg	Examen médico-sportif du jeune athlète
Urhausen	Axel	Médecine du Sport	10.05.2014	Workshop Alformec	Mondorf-les-Bains	Médecine du Sport - du diagnostic au traitement.
Urhausen	Axel	Médecine du Sport	09.04.2014	22e Séminaire Médecine du Sport	Val d'Isère (F)	Paramètres sanguins dans le suivi de sportif de compétition
Van Giffen	Nicolien	Orthopédie	04-06.12.2016	Congrès annuel de la Société Française d'Arthroscopie	Luxembourg	Surgical portals in ankle arthroscopy
Vervier	Jean-François	Pédopsychiatrie	07-10.05.2014	Congrès AEPEA	Bruxelles (B)	Présidence sessions
Vervier	Jean-François	Pédopsychiatrie	26-27.02.2014	8 ^{ème} journées de Prévention du suicide	Luxembourg	Trauma, deuil et exil
Vervier	Jean-François	Pédopsychiatrie	20.06.2014	Journée d'étude du Ministère de l'éducation nationale, de l'Enfance et de la jeunesse	Luxembourg	Prises en charge hospitalières et transculturelles des jeunes migrants et leurs familles
Vervier	Jean-François	Pédopsychiatrie	17.10.2014	Journée du Réseau nord - européen francophone de Pédopsychiatrie de Liaison,	Nancy (F)	Annonce du diagnostic d'autisme dans une pratique pluridisciplinaire et multiculturelle au Luxembourg,
Wagner	Daniel	Cardiologie	22.03.2016	Société Luxembourgeoise de Cardiologie	Luxembourg	Angor stable, une espèce en voie de disparition
Wagner	Daniel	Cardiologie	29.04.2014	Education & Research Day	Luxembourg	Circulating microRNAs after cardiac arrest
Werer	Christophe	Soins Intensifs	07-10.09.2014	5th International Hypothermia Symposium	Edinburgh (Ecosse)	Poster : Bispectral index as early predictor of neurological outcome after cardiac arrest
Wirth	Claudine	Rhumatologie	18.10.2014	Journée de Rhumatologie, Alformec	Luxembourg	Rhumatologie
Wirth	Claudine	Rhumatologie	29-30.03.2014	Rhumatologie et Orthopédie, Alformec	Weiskirchen (D)	Rhumatologie
Wirtz	Gil	Pneumologie	18.10.2014	L'hypertension artérielle pulmonaire (HTAP)	Luxembourg	Diagnostic et classification de l'hypertension artérielle pulmonaire: une approche pluridisciplinaire





Centre Hospitalier de Luxembourg

4, rue Ernest Barblé L-1210 Luxembourg

Tél : +352 44 11 11 Fax : +352 45 87 62 www.chl.lu